

NA
7558
B7
H34

CORNELL
UNIVERSITY
LIBRARY



BOUGHT WITH THE INCOME
OF THE SAGE ENDOWMENT
FUND GIVEN IN 1891 BY
HENRY WILLIAMS SAGE

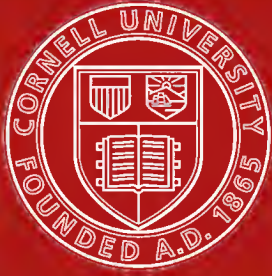
FINE ARTS LIBRARY

Cornell University Library
NA 7558.B7H34

The model village and its cottages: Bour



3 1924 015 178 548



Cornell University
Library

The original of this book is in
the Cornell University Library.

There are no known copyright restrictions in
the United States on the use of the text.

<http://www.archive.org/details/cu31924015178548>

THE MODEL VILLAGE
AND ITS COTTAGES :
BOURNVILLE.



PLATE I. . .
BLOCK OF FOUR
COTTAGES:
BOURNVILLE. .



Kilham & Hopkins, architects

The entrance gateway of a new house designed along true New England Colonial lines—the home of B. F. Pitman, Longwood, Mass.

THE MODEL VILLAGE AND ITS COTTAGES: BOURNVILLE

ILLUSTRATED BY
FIFTY-SEVEN PLATES OF PLANS VIEWS & DETAILS

BY
W. ALEXANDER HARVEY
Architect.

LONDON
B. T. BATSFORD, 94 HIGH HOLBORN
1906

DEDICATED TO
MR & MRS. GEORGE CADBURY.

PREFACE.

IN February, 1904, I was invited to read a paper on the subject of Cottage Homes before the London Architectural Association, when I took as the basis of my remarks the work executed from my designs at the Bournville Village. In adapting myself to the limits of such a paper, I found that, while much which was treated suffered considerably through inevitable compression, a great deal that I wished also to include had to be omitted. This suggested to me the idea, now realised in book form, of treating the subject more comprehensively, giving plans and views of actual examples of cottages, with measurements and costs, and amplifying and adding to my former notes and observations.

Even with the larger scope of a book, it is still felt that much has been left undone and unsaid, and it is frankly admitted that one man dealing with his own work can scarcely pretend to do full justice to the broad subject under notice ; nevertheless, it is hoped that the plans and views of Bournville cottages, accompanied by descriptions and notes, may at least prove of value as suggestions for those interested in a matter now claiming very wide attention—that of the building of cottages which may fitly be called *homes*.

I am indebted to the Bournville Village Trust for their courtesy in allowing me to publish plans and particulars of the Estate cottages, as well as to the private owners of the few other cottages dealt with in these pages. I must also acknowledge my indebtedness to Mr. T. B. Rogers for his valuable assistance in the production of the book.

W. ALEXANDER HARVEY.

5, BENNETT'S HILL,

BIRMINGHAM.

December, 1905.

CONTENTS.

	PAGE
INTRODUCTION.—The housing problem of the future—the artisan-suburb. Remedies already suggested — municipali- sation, etc. Experiments. The Home: its necessities and requirements—environment—fresh air—the garden—Beauty. The revival in domestic architecture and its application to cottage building. General	1
THE BOURNVILLE VILLAGE.—Its origin and its founder's motive. The Bournville Village Trust. First and subsequent projects. A National scheme. Rents. Inhabitants. Buildings. Open spaces, etc. The village schools. Bourn- ville's claims	9
COTTAGES AT £135, WITH NOTES ON THE ECONOMIC BUILDING OF SMALL COTTAGES. Simplicity and regularity of planning. Arrangement of outbuildings. Height of rooms. Ornament. The true test of economy. Foundations. Stock articles. General . .	16
THE LAYING OUT OF GARDENS.—A Bournville garden. Paths. Bedding. Flowers. Fruit trees, etc.	23
BLOCKS, PAIRS & SINGLE COTTAGES.—Examples of Bournville cottages, with description, accommodation, materials, etc. Variations of the same plan. The long sloping roof, the large living room, and other features . . .	25

	PAGE
GENERAL NOTES.—The bath—the sunk bath—the “Cabinet” bath—Cornes’ bath. The ingle-nook. Chimneys. Windows —casement and sash. Bricks. Roof covering. Wall spaces—roughcast—whitewash—half-timber, etc. . . .	51
THE LAYING OUT OF A MODEL VILLAGE.—Regard of physical features. Advisory architect. The selection of centres. Roads. Street elevations. Service of natural advan- tages. Shopping. Factories. Plots of houses. Gardens. .	61

LIST OF PLATES.

NOTE.—WHERE SEVERAL PLATES FOLLOW EACH OTHER, THE PAGE WHICH
THE FIRST FACES IS REPEATED FOR EACH IN THIS LIST.

PLATE	PAGE
I.—(FRONTISPIECE.) FOUR COTTAGES, THORN ROAD .	
II.—THE TRIANGLE	9
III.—SHOPS, MARY VALE ROAD	10
IV.—LINDEN ROAD	10
V.—THE OLD FARM INN	10
VI.—SYCAMORE ROAD	12
VII.—THE SCHOOLS (PERSPECTIVE SKETCH)	12
VIII.—CARVED STONE PANELS, THE SCHOOLS	12
IX.—RUSKIN HALL	14
X.—BOURNVILLE MEETING HOUSE	14
XI.—BOURNVILLE MEETING HOUSE (INTERIOR)	14
XII.—COTTAGES IN BLOCKS OF EIGHT (PLAN AND ELEVATION)	16
XIII.—COTTAGES IN BLOCKS OF EIGHT (PERSPECTIVE SKETCH)	16
XIV.—BLOCK OF FOUR COTTAGES (PLAN AND ELEVATION)	25
XV.—BLOCK OF FOUR COTTAGES (VIEW)	26
XVI.—PAIR OF COTTAGES (PLAN AND ELEVATION)	28
XVII.—PAIR OF COTTAGES (VIEW)	28
XVIII.—PAIR OF COTTAGES (PLAN AND ELEVATION)	28
XIX.—THREE PAIRS OF COTTAGES (VIEW)	28
XX.—PAIR OF COTTAGES (PLAN AND ELEVATION)	30

PLATE	PAGE
XXI.—PAIR OF COTTAGES (VIEW)	32
XXII.—BLOCK OF FOUR COTTAGES (VIEW).	32
XXIII.—BLOCK OF FOUR COTTAGES (VIEW)	32
XXIV.—BLOCK OF FOUR COTTAGES (VIEW).	32
XXV.—BLOCK OF FOUR COTTAGES (VIEW)	32
XXVI.—BLOCK OF FOUR COTTAGES (DETAIL VIEW).	32
XXVII.—PAIR OF COTTAGES (PLAN AND ELEVATION)	33
XXVIII.—PAIR OF COTTAGES (PLAN AND ELEVATION)	34
XXIX.—BLOCK OF THREE COTTAGES (PLAN)	36
XXX.—BLOCK OF THREE COTTAGES (PERSPECTIVE SKETCH)	36
XXXI.—PAIR OF COTTAGES: SHALLOW SITE (VIEW)	38
XXXII.—PAIR OF COTTAGES (VIEW)	38
XXXIII.—PAIR OF COTTAGES (VIEW).	38
XXXIV.—PAIR OF COTTAGES (PLAN AND ELEVATION)	40
XXXV.—PAIR OF COTTAGES (VIEW)	40
XXXVI.—SINGLE COTTAGE (PLAN AND ELEVATION)	42
XXXVII.—SINGLE COTTAGE (VIEW)	42
XXXVIII.—SINGLE COTTAGE (VIEW).	42
XXXIX.—SINGLE COTTAGE (PLAN AND ELEVATION)	44
XL.—SINGLE COTTAGE (VIEW)	44
XLI.—STAIRCASE OF SINGLE COTTAGE	44
XLII.—DINING ROOM OF SINGLE COTTAGE	44
XLIII.—SINGLE COTTAGE (PLAN AND ELEVATION)	46
XLIV.—SINGLE COTTAGE (VIEW).	46
XLV.—PAIR OF THREE-STOREY COTTAGES (GROUND AND BEDROOM PLAN)	48
XLVI.—PAIR OF THREE-STOREY COTTAGES (ELEVATION AND ATTIC PLAN)	48
XLVII.—PAIR OF THREE-STOREY COTTAGES (VIEW)	48

LIST OF PLATES.

xi

PLATE	PAGE
XLVIII.—PAIR OF THREE-STOREY COTTAGES (VIEW) . . .	48
XLIX.—PAIR OF COTTAGES (PLAN AND ELEVATION) . . .	50
L.—PAIR OF COTTAGES (VIEW).	50
LI.—COTTAGE INGLE.	50
LII.—PAIR OF COTTAGES (DETAIL VIEW).	50
LIII.—PAIR OF COTTAGES (VIEW)	50
LIV.—PAIR OF COTTAGES (VIEW OF BACK)	50
LV.—PAIR OF COTTAGES (PORCH)	50
LVI.—SINGLE COTTAGE (VIEW)	50
LVII.—SINGLE COTTAGE (PORCH)	50

OTHER ILLUSTRATIONS.

GARDEN PLAN	23
BLOCK OF THREE COTTAGES (ELEVATION)	27
BLOCK OF THREE COTTAGES (ELEVATION)	35
THE "CABINET" BATH	51
CORNES' PATENT BATH	52
SMALL COTTAGE INGLE (ELEVATION AND PLAN)	54

THE MODEL VILLAGE: BOURNVILLE

INTRODUCTION.

IN introducing the present work on “The Model Village and its Cottages,” it would be certainly out of place to discuss the housing problem ; there is, nevertheless, an aspect of this question to which the attention of the reader should be briefly directed.

The housing problem is no longer one in which the poor in the congested districts of great towns are alone concerned. A far larger section of the people is affected,—a section which includes not only the labouring class, but also the skilled artisan, and even a class of the people still more prosperous. In the light of present sanitary and hygienic knowledge it is at last recognised that the housing conditions of the past will not suffice for the future. The difficulties besetting reform are necessarily very great, yet with the movement now afoot—not only in this country, but also on the Continent and in America—it is not unreasonable to expect that before long important changes will take place. Now that politicians and economists, as well as sanitarians, are identifying themselves with the movement, it is clear that if it is to result in lasting good, the attention of the *builders* of these new homes for the people must also be engaged ; and the field that thus presents itself to the efforts of the architect is a large one.

No better testimony to this need can be afforded than by the typical latter-day artisan-suburb, and it is indeed in this very suburb that the housing problem confronts us in what threatens to be in the future one of its worst aspects. Desolate row upon row of ugly and cramped villas, ever multiplying to meet the demands of a quickly increasing population, where no open spaces are reserved, where trees and other natural beauties are sacrificed to the desire to crowd upon the land as many dwellings as possible, and where gardens cannot be said to exist—such are the suburbs which threaten to engulf our cities. That they do not adequately meet the needs of the people is beyond all question.

The remedy most frequently suggested is that the people should themselves undertake and develop housing schemes collectively through the municipalities. It is pointed out that, if nothing is done, the municipalities will before long have a slum problem on the outskirts of the town to deal with, and it is urged that they should have greater power over the development of land in the extra-urban districts. It is recommended, again, that the authorities should exercise the powers they already possess. The Inter-Departmental Committee on Physical Deterioration, in their Report to the Government of 1904, insisted most strongly, it will be remembered, on the necessity for preventing the creation of these new slums. "The local authorities in contiguous areas which are in process of urbanisation," it declares, "should co-operate with a view to securing proper building regulations, in furtherance of which end the making of building bye-laws, to be approved by the Local Government Board, should be made compulsory on both urban and rural authorities ; attention should also be given to the preservation of open spaces, with abundance of light and air. By the use of judicious foresight and prudence

the growth of squalid slums may be arrested, and districts which hereafter become urbanised may have at least some of the attributes of an ideal garden city."

In the case of municipalities undertaking the development of land, emphasis should be laid upon the advisability of securing the services of experts both for the laying out of the land and for the designing of the houses, and in order to obtain variety in the latter it is recommended that the designs should be the work of several architects.

At present, as is well known, the rows of houses in what has been called the artisan-suburb are usually the work of the speculating builder, who buys land at a cheap rate and builds to create ground rents, often selling the houses at a bare profit, or even under cost. As the maintenance of the property does not fall upon himself, it is not surprising that the class of building erected should be that generally known as "jerry-built."

Apart from these and other schemes suggested is the work of the Garden City Association in their experiment at Hitchin, and also the experiments at Port Sunlight, Bournville, and elsewhere, which have all given such a practical impetus to the movement. An encouraging sign of the times, too, is the commendable effort of the Trustees of Eton College, who, to prevent the development of the typical artisan-suburb on their extensive land at Hampstead, have formed a Trust to buy 240 acres for building purposes, the division of the land and the plans of the houses being required to meet certain specified conditions. In many suburbs, owing to the few houses of high rental, the rates are extremely high, and a heavy percentage is absorbed by the schools. One of the objects of the Garden Suburb, as it is called, is the amalgamation of all classes in the same district, the artisan and the well-to-do living in reasonable proximity to one another. With the abolition of the

unsightly row the æsthetic objection at least to such an arrangement is removed, for in the interesting disposition of houses of varying sizes lies one of the secrets of beautiful village building, as is testified in so many well-known old villages. In the new suburb it is hoped to provide cottages for workpeople with gardens of one tenth of an acre.

But whether land is developed privately or by public bodies, it is essential, in order to secure real reform, that the needs, domestic and social, of the people for whom the houses are provided should be intimately understood. What will have to be provided are *homes*, and it should be clearly recognised what constitutes the *home* demanded by the large section of the community which the problem affects.

At the outset it may be noted that for half the year the occupants of these homes spend the hours of recreation out of doors, also that most of them prefer that opportunities for such recreation should be had within easy reach of the home itself. Though the public-houses and the numerous artificial pleasures provided in towns are sought by so many, the persistence of those who still cultivate the contracted and ill-favoured garden strip suggests a need of the greatest importance. This persistence, moreover, does not, it will be found, indicate a desire for exercise and fresh air alone, but a love for familiar surroundings. Among the lowest class this instinct may still be observed, and in court tenements it will be found that the doorstep takes the place of the garden strip. The fact is that the Englishman's house is his castle, and though his castle be deprived of its "grounds," the home instinct, so deeply rooted in the English character, will not be denied. Whether in the future this instinct should be fostered, or blunted as in the past, is a matter of elementary sociology. The inference, then, will be that the accommodation of the house is not the only

matter with which we have to concern ourselves, but that the closest attention should also be devoted to the environment. Besides the provision of an ample garden, the environment itself must be healthy and pleasant. The influence of surroundings in exalting or depressing the mind, and thus affecting the life, is a matter not only for the theorist, but for the architect.

With the provision of a garden, the tenant himself may add to the beauty of his home, and at the same time enjoy fresh air and recreation. The cultivation of the soil is certainly the best antidote to the sedentary occupations of those working in large towns. A primitive instinct is indulged, the full value of which seems hardly yet to have been realised. Many believe, indeed, that with its encouragement the abuse of the social club and public-house will be materially lessened, and one of the greatest social evils of the time disappear. (The experience of Bournville certainly gives support to this conclusion, for nearly every householder there spends his leisure in gardening, and there is not a single licensed-house in the village.)

With regard to the house itself, so far as it contributes to a pleasant environment, it should be remembered that architectural beauty is not dependent upon the ornament introduced; on the contrary, the use of the latter rather tends to deprive the dwelling of its homeliness, and of this truth the jerry-built house, with its scroll-cut lintel and moulded brick string-course, affords only too frequent an illustration. The soul of beauty is harmony, which may co-exist with the veriest simplicity; and it is in the harmonious treatment of parts, and not in useless and sometimes costly decoration, that a dwelling gains that homely appearance which it should be our aim to realise.

The chief essentials in a home, then, are adequate accommodation—which must include a bath as a *sine quâ non*—a pleasing and

harmonious appearance of exterior and environment, and the provision of an ample garden.

It is surely not a mere coincidence that at the present time, not only in England but in other countries, a movement is in progress side by side with that of housing reform which is of great significance—the revival in domestic architecture. At present this has manifested itself chiefly in recent examples of country houses and in residences of the larger cottage class. Though the influence has already revealed itself to some extent even in the smaller cottagedwellings, and though many notable experiments have been made—most telling of all the splendid experiment at Garden City—it may be said that the effort on the part of the architect generally to satisfy the demands both of art and economy has yet to be made. The fact that it is cheaper to erect villas in long rows of a repeated and stereotyped design has doubtless largely discouraged such effort, but the prejudice of the artisan and others against the revival—for the revival was at first looked upon, perhaps, as an artistic craze—can scarcely now be regarded as an obstacle. If the needs of the people, as they have been conceived in the few preceding paragraphs, are to be satisfied, the two movements of housing reform and the revival in domestic architecture must certainly advance hand in hand. With adequate experiment it will probably be found, moreover, that the difficulty on the economic side has been exaggerated. On this account, in the examples of smaller cottage types here dealt with, attention has been specially paid to this aspect of the question, a pleasing appearance having been aimed at, with the employment of the least costly materials. An effort has also been made in a further stage to show how monotony may be avoided, even with a repetition of the same plan, by variety in combination and disposition.

Larger types of cottages are also included, and economy in

design and cost of materials has here also been considered, as well as a pleasing effect aimed at. The plans given, with one exception, are of examples actually existing, so that what defects may be present can scarcely be disguised. The intention is that they should be regarded chiefly as suggestive, and it is frankly admitted that they are not only capable of modification, by which their cost may be reduced, but also of improvement. The work dealt with has been executed during the last ten years.

The method of including with the description of each cottage such notes and suggestions as have seemed worthy of mention, has been adopted as being more valuable than grouping these under separate heads, though a number of general observations on various features of cottage-building has also been added.

The photographs reproduced were taken by T. Lewis and by Harold Baker, both of Birmingham.

NOTE.—The cost is given of all cottages where the accommodation, materials, &c., are fully described, with the exception of one or two cases in which the cottages are owned privately. As most of the examples given have been built by the Bournville Village Trust, it should be noted that the figures stated include an addition to the net cost of $3\frac{3}{4}$ per cent. as builder's profit.



PLATE II. . . .
THE TRIANGLE,
BOURNEVILLE. . . .

THE BOURNVILLE VILLAGE.

ALTHOUGH many articles have already appeared from time to time in newspaper and periodical respecting the Bournville Village, the following account of its founding and development will doubtless be of interest to the reader :—

In 1879 Messrs. Cadbury Brothers removed their works from Birmingham to the present site at Bournville, and twenty-four cottages were erected there for their workmen. This really formed the nucleus out of which in recent years the village has developed. It was in 1895 that Mr. George Cadbury, the senior member of the present firm, commenced the work of building a model village. One of the objects of the scheme was that of “alleviating the evils which arise from the insanitary and insufficient housing accommodation supplied to large numbers of the working classes, and of securing to workers in factories some of the advantages of outdoor village life, with opportunities for the natural and healthful occupation of cultivating the soil.” A simple and interesting statement of the motive behind the experiment was made by Mr. Cadbury himself at the Garden City Conference, held at Bournville in 1901. An intimate knowledge of the lives of Birmingham working-men, gained by an experience of some forty years, had shown him that the greatest drawback to their moral and physical progress was the lack of any healthful occupation for their leisure. Although many men took up carpentry and other crafts, such hobbies, he said, had proved insufficiently recreative, and in most cases the men soon tired

of them. Realising this, he began to think of new means. His conclusion was that the only practical thing was to bring the factory worker out on to the land, that he might pursue the most natural and healthful of all recreations, that of gardening. It was impossible for working men to be healthy and have healthy children, when after being confined all day in factories they spent their evenings in an institute, club room, or public house. If it were necessary for their health, as it undoubtedly was, that they should get fresh air, it was equally to the advantage of their moral life that they should be brought into contact with Nature. There was an advantage, too, in bringing the working-man on to the land, for, instead of his losing money in the amusements usually sought in the towns, he saved it in his garden produce—a great consideration where the poorer class of workman was concerned. The average yield per garden in the 1901 tests at Bournville, after making allowance for all outgoings, proved to be 1s. 11d. each per week. Mr. Cadbury also thought that the increased consumption of fresh vegetable food, instead of animal food, was further desirable. It was touching, he thought, to see the interest and pleasure taken by town families when on coming into the country they saw seeds germinate and vegetables grown for the first time. Nor was the advantage of leaving the town for the country restricted to the workmen. Mr. Cadbury showed that the greater facilities there for obtaining land were also of advantage to the manufacturer whose business was increasing.

The Bournville idea was at first regarded as an impracticable one, even apart from the economic side of the question, but the realisation of the scheme has proved otherwise. The average garden space allotted to the Bournville cottages is 600 square yards, this being as much as most men can conveniently cultivate,



PLATE III. SHOPS,
BOURNVILLE. .



PLATE IV. . . .
LINDEN ROAD,
BOURNVILLE .

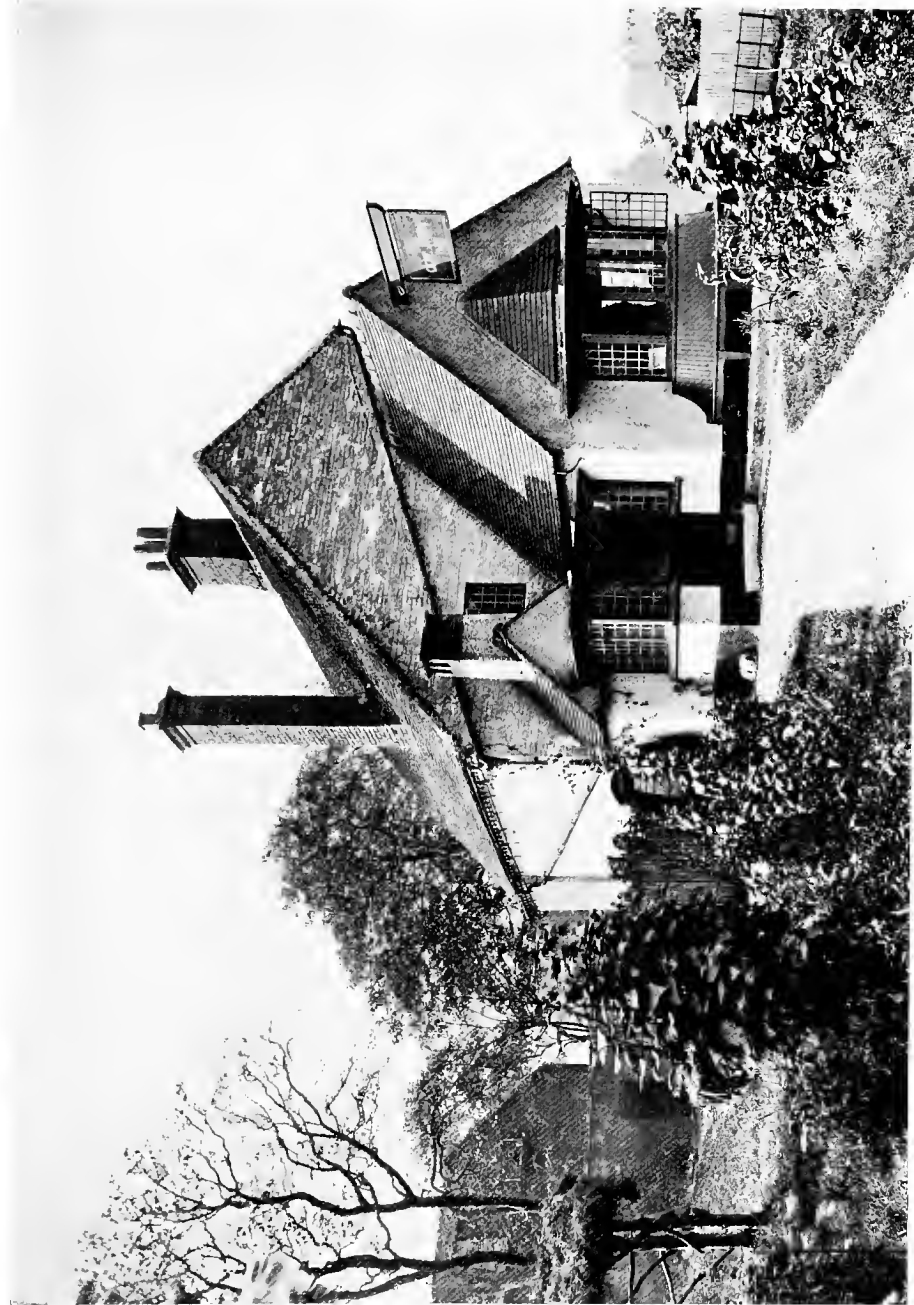


PLATE V. . . .
THE OLD FARM
INN, BOURN-
VILLE.

and, almost without exception, the Bournville tenants are the most enthusiastic gardeners—a statement no one surely will traverse who has paid a visit to the village in the summer.

While it was the first aim of the founder to provide dwellings for the factory worker which should have adequate accommodation and large gardens, it was not intended that at Bournville provision should be made alone for the poorer working class. It might be pointed out that one of the most prominent ideals in the scheme of the Garden Suburb Trust, already referred to, is “that all classes may live in kindly neighbourliness,” and the amalgamation of the factory-worker and the brain-worker in the same district is catered for as being expressly desirable. At Bournville there has always been a demand for houses both on the part of the skilled artisan and others, and this demand has been provided for from the first. Rents in the village range from 4s. 6d. a week, rates not included, to 12s. a week; and there are also a few houses of a still larger class at higher rentals. Nor are the houses let to Messrs. Cadbury’s own workpeople exclusively, as the following figures will show—figures based on a private census taken during 1901, and here quoted from a booklet issued by the Village Trust :—

PROPORTION OF HOUSEHOLDERS WORKING IN—		OCCUPATIONS OF HOUSEHOLDERS—	
Bournville	41·2 per cent.	Employed at indoor	
Villages within a mile		work in factories . .	50·7 per cent.
of Bournville . . .	18·6 „	Clerks and travellers .	13·3 „
Birmingham . . .	40·2 „	Mechanics, carpenters,	
		bricklayers, and	
		various occupations	
		not admitting of exact	
		classification . . .	36·0 „

The village is four miles from Birmingham, and is easily accessible by cycle, rail, or electric car. The last come within easy distance of the village, workmen’s fares being 2d. return.

Under the founder's first scheme the land was let upon leases of 999 years, subject to a ground rent varying from $\frac{1}{2}$ d. to 1d. per yard (600 square yards at $\frac{1}{2}$ d. and 1d. = £1 5s. and £2 10s. respectively). Arrangements were made to find capital on mortgages granted at the rate of Three per cent. to those who paid less than half the cost of the house and Two and a-half per cent. to those who paid more. Although a stipulation was made that no one person should be allowed to build more than four houses, it was found necessary to revise the arrangement in order to prevent speculation. In 1900, therefore, the estate was handed over to a Trust on behalf of the nation, the whole income to be directed to solving the housing problem. The houses now built are let to tenants at moderate weekly rentals, which include the annual ground rent, equal to about 1d. per yard (according to its value), and which should yield Four per cent. net. The revenue of house and ground rents is employed, after provision has been made for the maintenance and repair of present property, in the development of the village itself, and in the laying out and development of other villages elsewhere, the Trust being empowered under the deed of foundation to acquire land in any part of Great Britain. Subsequently to the formation of the Trust, additional land adjacent to Bournville has been added to the founder's gift, and included in the village, which now extends over 458 acres. Already upwards of 100 acres of land have been laid out for building. There are now about 450 houses in the hands of the Trust, which number, added to the 143 sold under the first scheme, makes a total of nearly 600. With the income of the Trust, building is being steadily proceeded with, and there is a continual demand for houses.

The Trustees have power to make arrangements with railways and other companies for cheap means of transit. They may lease,



PLATE VI. . . .
SYCAMORE ROAD,
BOURNVILLE.

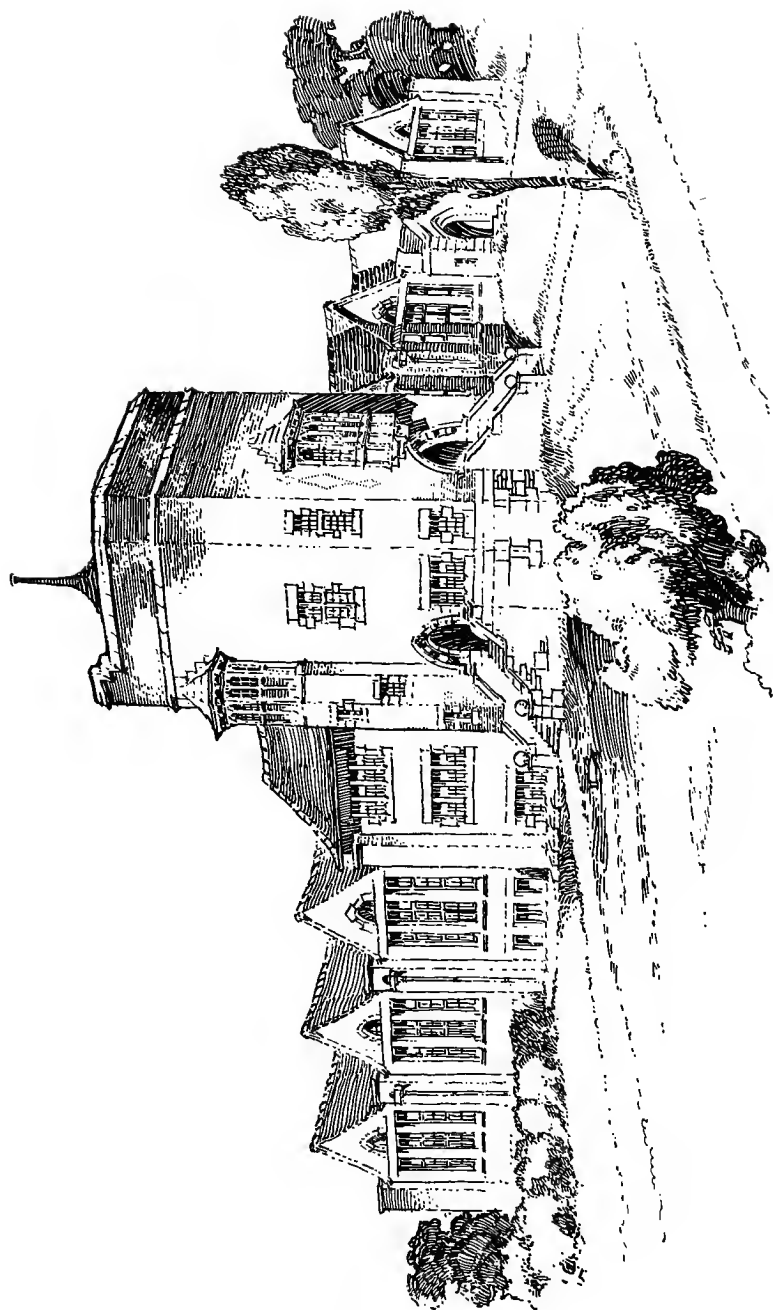


PLATE VII. . .
THE SCHOOLS,
BOURNVILLE
SEE PAGE 13.



PLATE VIII. . .
CARVED STONE
PANELS FOR
SCHOOLS. . .

underlet, or sell land, or develop it and prepare it for building, give land, or erect buildings for places of worship, hospitals, schools, technical institutes, libraries, gymnasiums, laundries, baths, &c. Occupying a central position in the village are already the Bournville Meeting House (see plates X. and XI.), the Ruskin Hall, an institute founded in 1903, and including library, reading-room, lecture hall, class rooms (see plate IX.), and the schools described later. Ample open spaces have been reserved in various parts of the village. These include the Village Green; The Triangle (a plot of land with lawn, flower beds, and shrubbery, intersected by public paths—see plate II.); Camp Wood (an undulating woodland, thick with old forest-trees); children's playgrounds and lawns, with swings, bars, &c.; allotment gardens; youths' and girls' gardens (consisting of a number of small plots rented and cultivated by boys and girls, in connection with which gardening classes are held), &c. A large area of land, through which flows the Bourn stream, has also been reserved for laying out as a public park. Adjacent to the Estate, though not part of it, are two extensive and well-wooded recreation grounds belonging to Messrs. Cadbury, which are put at the disposal of their men and women employees; those for the former including open-air swimming baths, which may be used during stipulated hours by the tenants of the Estate houses. These recreation grounds separate the works buildings from the village itself, and in the event of the factory ceasing to exist, the Trust deed provides that they be handed over to the District Council for use as a public park. Nearly all the old trees and woodland on the Estate have been preserved, and new trees planted in many parts.

The schools (see plate VII.) are the gift to the village of Mr. and Mrs. George Cadbury. They accommodate 540 children

(270 boys and 270 girls), and are constructed on the central-hall plan. There are six class-rooms for fifty children each, and six for forty each, and the dimensions of the large hall are 84 ft. by 32 ft. The land falls from North to South, and advantage has been taken of the basement afforded to provide for accommodation for classes in cookery, laundry, manual instruction, and various branches of handicraft. The buildings stand in grounds two and a-half acres in extent, adjoining which is the Park, the children thus having access in all to about ten acres. The tower rises to a height of about 60 ft., and has been utilised for a library, laboratory, &c. An extensive view of the surrounding country is obtained from the top, and a map, incised in stone, with compass and locating apparatus, is provided for instructing the children in local geography. Everything is being done in the designing of details—carved and painted panels, &c.—to make the building itself a permanent means of educating the children; the subjects chosen include historical scenes, truthfully depicted as regards dress, customs, architecture, &c., while in the bosses and voussoirs are represented English flowers and foliage, conventionally treated. The carving is executed by Mr. Benjamin Creswick, of Birmingham.

In the designing of the building every effort has been made to embody the latest improvements and the result of the most broad-minded and enlightened study of education.

Gardens are provided for the instruction of the children in gardening, vegetable growing, &c.

The low death-rate at Bournville during 1904 of 6·9 per thousand, compared with 19 per thousand in Birmingham, is some indication of the healthiness of the village. The figures are taken from the report of the district medical officer of health.

It is not proposed to deal here with the economics of model-village or garden-city schemes generally. Though the movement

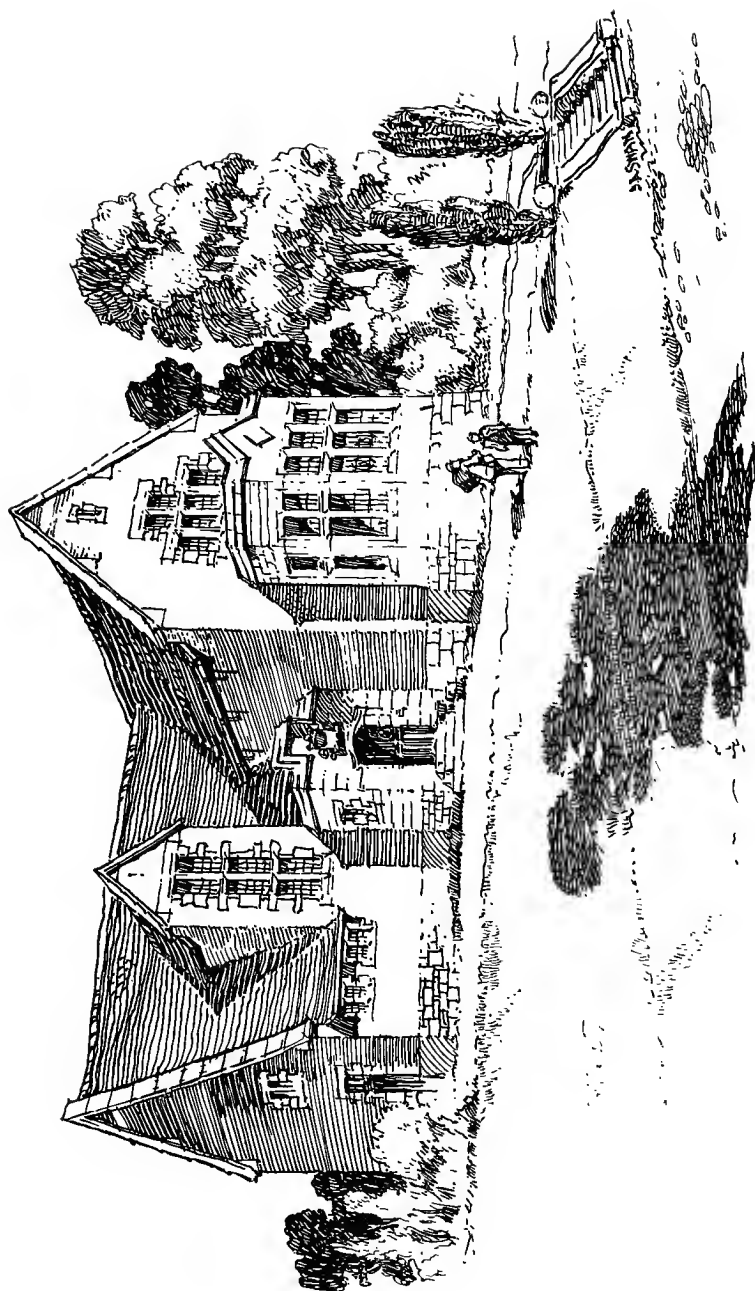


PLATE IX.
RUSKIN HALL,
BOURNVILLE. . .

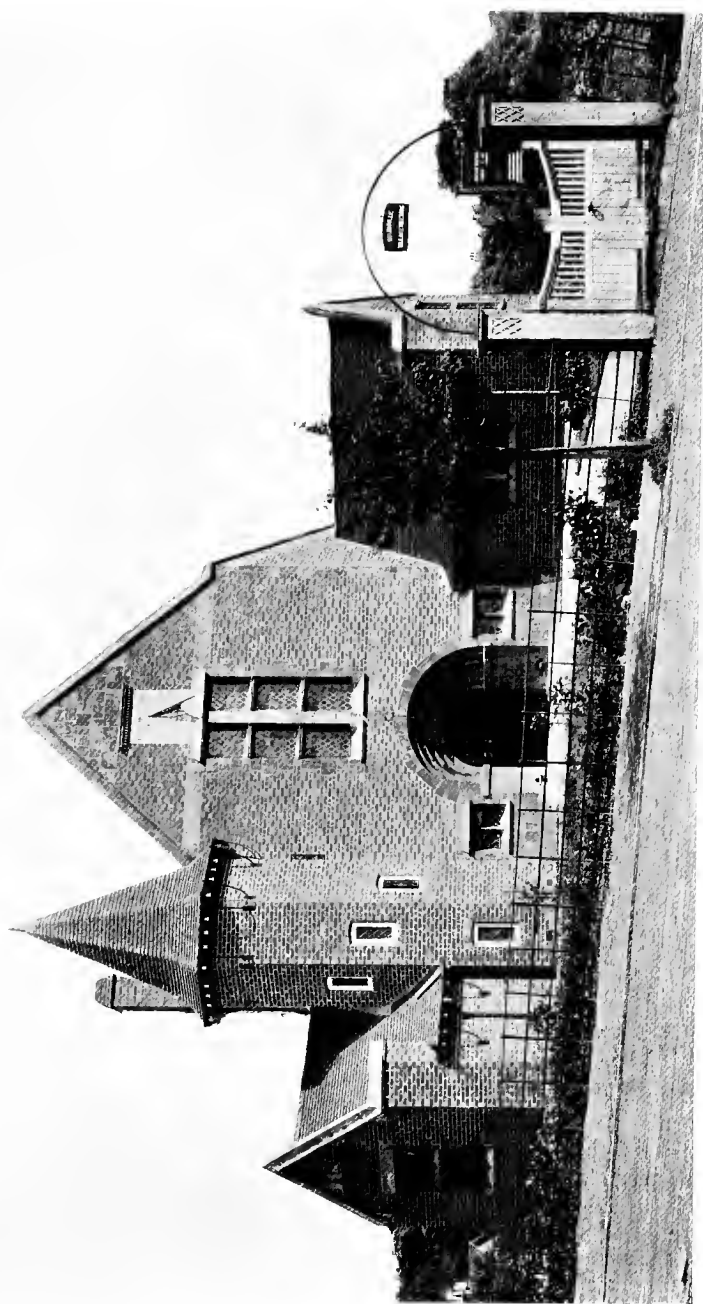


PLATE X. . . .
MEETING HOUSE,
BOURNVILLE.

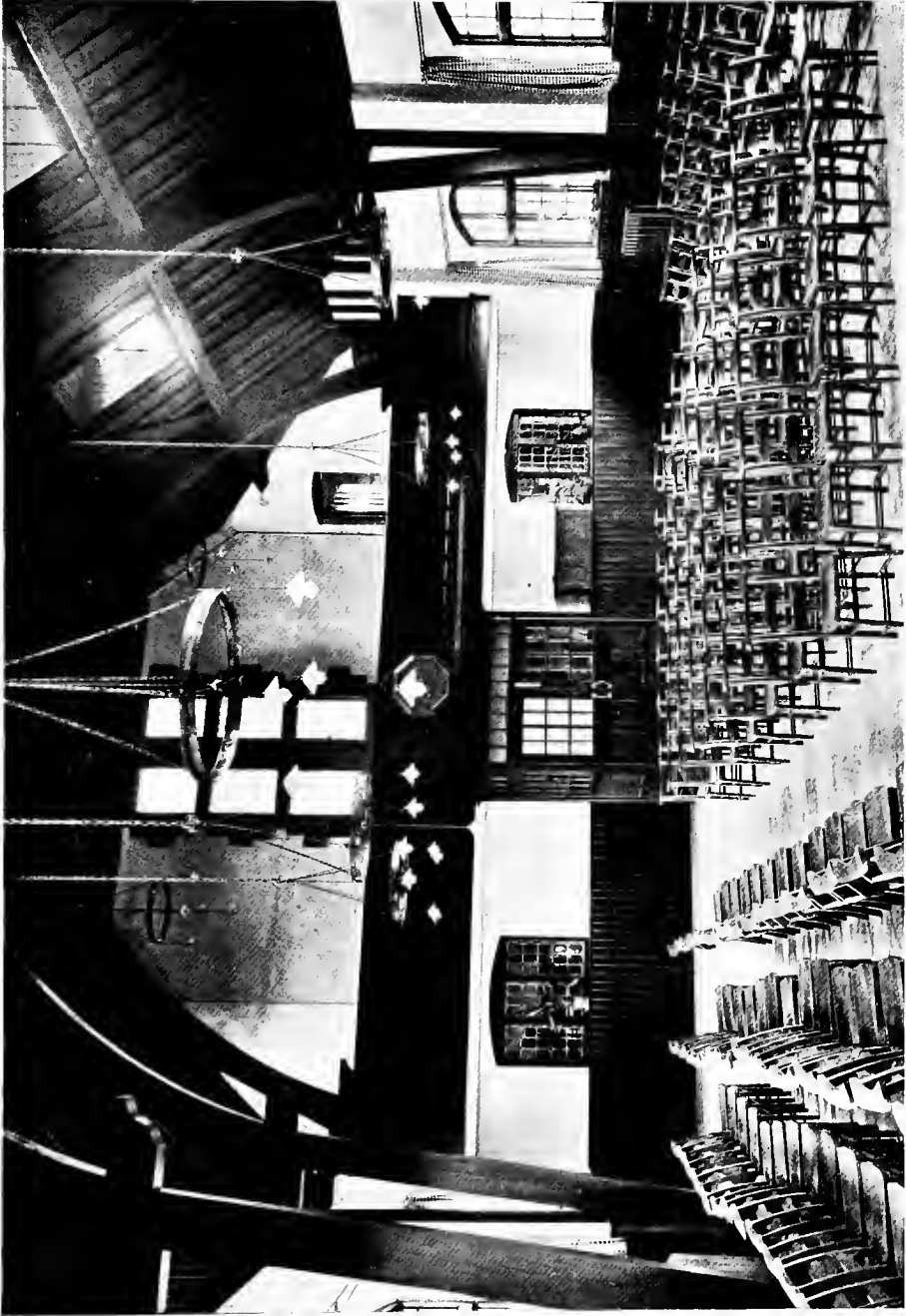


PLATE XI.
MEETING HOUSE,
BOURNVILLE.

is still very young, it is already advancing from the problematical stage. Its progress is being watched with the keenest interest by many who realise that of all courses the most impracticable in the long run is that which allows the slum-suburb to spring up unchecked.

If it be asked, with regard to the problem of the housing of the people, what is Bournville's contribution towards its solution, it would be stating its claims at the lowest to say that it stands as an example of what the village of the future may be, a village of healthy homes amid pleasant surroundings, where fresh air is abundant and beauty present, and where are secured to its people by an administration co-operative in nature numerous benefits which under present conditions are denied them elsewhere.

COTTAGES AT £135, WITH NOTES ON THE ECONOMIC BUILDING OF SMALL COTTAGES.

PLATES XII AND XIII.

COTTAGES IN BLOCKS OF EIGHT, AT £135.

PLATE xii gives the plan, with elevation, of a block of eight cottages, the accommodation of which is the least, and the dimensions the lowest, that should be provided for homes with one living room.

The accommodation is as follows :—

GROUND FLOOR.

Living Room, 12 ft. 4 in. \times 13 ft. Kitchen, 8 ft. \times 12 ft. 6 ins. (with "Cabinet" Bath, and boiler with patent steam exhaust). Larder under stairs.

BEDROOM FLOOR.

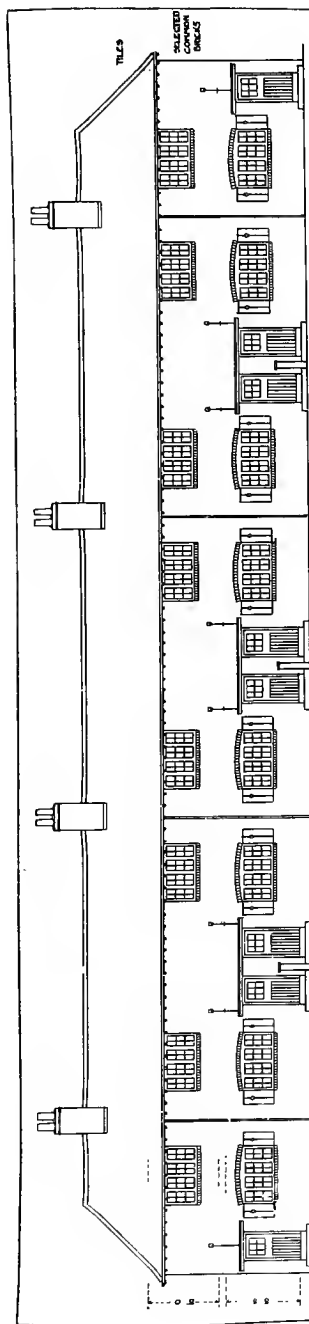
First Bedroom, 9 ft. 2 ins. \times 13 ft., and recess. Second Bedroom, 8 ft. 4 ins. \times 11 ft. 2 ins. Third Bedroom, 7 ft. 6 ins. \times 8 ft.

Total cost, £135 per cottage.

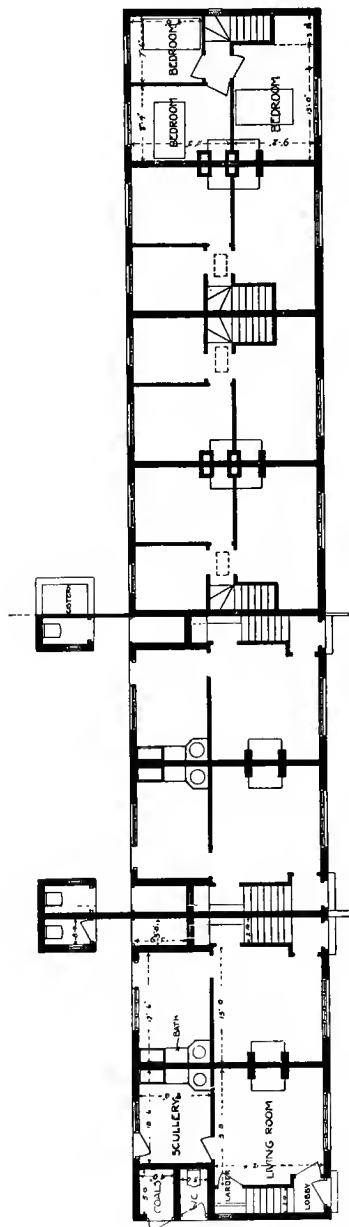
Laying out of garden, £7 1cs. extra.

Cubical contents, 64,800 ft. at 4d. per foot cube = £1,080 per block, or £135 per cottage.

There has been considerable discussion of late with regard to the building of cheap cottages suitable for labourers and the poorer artisans, both in the country and elsewhere. Experiments have been made in which the building materials employed have been other than brick, the object being a reduction in cost. The bye-laws which do not at present sanction the erection of cottages in some of these materials will, it is hoped, before long be altered. Meanwhile, what is wanted in most districts is the cheap dwelling in brick.



FRONT ELEVATION



BEDROOM PLAN

GROUND PLAN

SCALE OF FEET

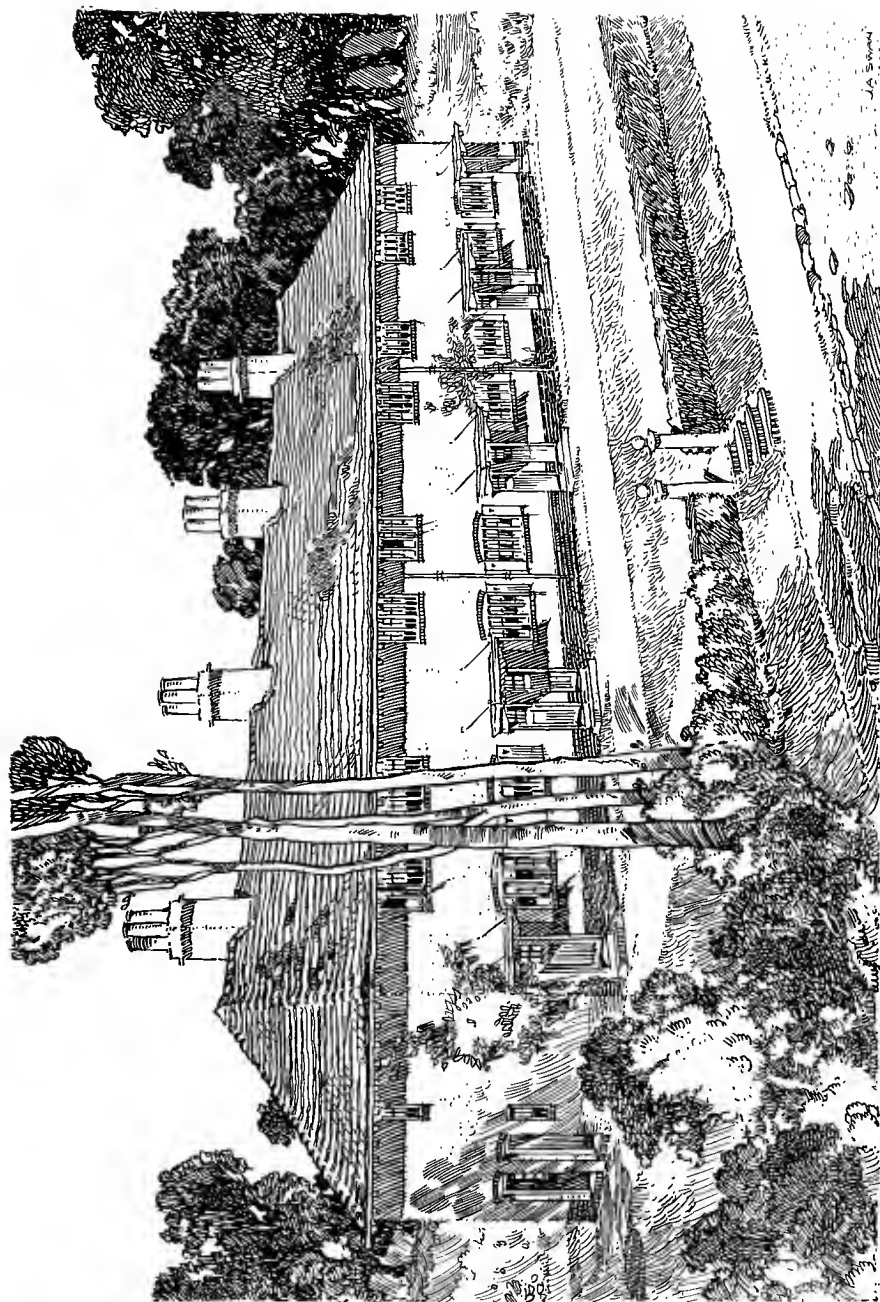


PLATE XIII. . .
BLOCK OF EIGHT
COTTAGES. SEE
PAGE 16. .

The example here given is of a similar plan to one from which a number of cottages in blocks of *four* have been erected at Bournville. Owing to a decision on the part of the Village Trust not to build in blocks of more than four, the plans here given have never been carried out at Bournville, but in view of the danger there is of under-estimating the cost of such cottages, and the importance of avoiding inaccuracies, estimates have been obtained for their erection under similar conditions. Economy of construction has been the main object in the design, without sacrificing that pleasant environment, privacy and homeliness of appearance which are, as already indicated, essential to the cottage home.

The cost of erecting in blocks of four only is necessarily increased, and the lowest estimate for those at Bournville is £160 per cottage, the particular estimate being, however, for a block of four on "made up" ground, necessitating deep footings, the cottages including the sunk bath, which is more costly than the "Cabinet" patent.

The plan might be simplified, if desired, by omitting the division wall between the living room and scullery, thus making one large room. The boiler, sink, and bath might then be planned in a small recess which could be screened off by a curtain when not in use.

SIMPLICITY AND REGULARITY OF PLANNING.—The roof runs uninterruptedly from end to end, by which unnecessary roof complications are avoided; the chimneys have been grouped together to diminish trimming and flashing, always costly items, and have been brought to the highest point in the roof to prevent smoky flues, consequent upon down draughts; and the building throughout is of a very inexpensive character. Further, the eaves run uninterruptedly, for the windows are not allowed to complicate

the spouting and roofing by breaking through the roof, the wall-plate nevertheless being kept at a fairly low level. In all cottages of this class, compactness and regularity should be always aimed at in planning, and the wall lines—set out at right angles—should be as long and unbroken as possible.

ARRANGEMENT OF OUTBUILDINGS.—The w.c.'s, here isolated, are in the Bournville blocks of four planned under the main roof, which arrangement is for many reasons preferable. As many as possible of the outbuildings should, in the case of small cottages, be arranged under the main roof. Often, where the outbuildings of these rows of cottages are extensive, one or more of the houses suffers through the projecting eaves of the other, and there is a narrow outlook upon a cramped yard. The better view of the garden obtained from the back rooms by the avoidance of this is an important consideration. The kitchen, in small property, is as much used as the living room, and the value of the restful glimpse of green to the housewife should not be ignored. (The isolation of the w.c. in the example under notice does not obstruct the light.) In the case of a corner site it is preferable to close in the yard at the back of the house, so that the week's wash may not be exposed to the public view. It may be advanced, however, that such a domestic display is not really unsightly, but gives a pleasant human interest to the surroundings. Such an opinion, nevertheless, will probably not find general acceptance.

HEIGHTS OF ROOMS.—The height of the building will also be reduced to the lowest limit. The heights of 8 ft. 3 ins. for the ground floor, and 8 ft. for the chamber floor, are quite adequate for the average cottage, so long as sufficient ventilation is provided. There is some difficulty in getting the artisan to recognise this, for a lofty and often draughty and cold room seems to have an unaccountable attraction for him. As, however, floor space is the

essential, the reduction of heights is in every way a legitimate means of economising the brickwork ; moreover, the scale of the building is at the same time rendered more pleasing. With the height reduced, it will be necessary to introduce the casement window, as the sash kind requires a loftier elevation. This, however, will be no detriment, as the former is more agreeable and appropriate to the cottage home.

EXTRA BEDROOM ACCOMMODATION.—If in any of the smaller types of cottages dealt with it is thought desirable to provide a fourth bedroom, or if larger bedrooms are required, an attic might be provided by slightly lifting the roof (where this is necessary), and the first floor might then be divided into two rooms or not, according to the requirements. Staircases, however, are expensive, and it is well for the sake of economy to provide bedrooms on the first floor. Where roof space is available this may be used for lumber, when the trap by which it is reached should be placed in the least important bedroom. The ceiling, however, should be slightly strengthened, and the bearing should not be too great.

ORNAMENT.—The sound principle that beauty should be based on utility is often violated, even in the building of small cottages and villas, in order to gratify a vulgar taste for shoddy and meaningless display. Although the architect may not be entirely to blame for submitting to this preference, it is none the less certain that if he avail himself of such opportunities as occur to introduce a purer taste, the public will in time respond, while such efforts on his part will be always heartily approved by his fellow architects. The difficulty of inducing builders to stock ornament that is really good is merely one of demand. The public taste may after all be found to be more amenable than is commonly represented. A readiness on the part of the Bournville tenants to catch the spirit of homely simplicity suggested in the design of the

houses has shown itself in the manner in which they furnish their homes, as, for instance, in their use of suitable curtains for the casement windows.

If it be decided that a row of cottages should have ornament, this should not be too small or crowded, and should be introduced in the right place—in the case of eight cottages, say in the third and the sixth, the unadorned ones serving as a foil. An excess of ornament should be avoided, especially if the aim is economy, and what there is should be broad and simple, for such, happily, is increasingly in favour in preference to the incongruous and florid stock carving of the jerry builder, which, bad as it is, must yet cost something. If money is to be spent, let preference be given first of all to the quality of the material used, and then to the extra elaboration of such material, such as roughcast, parquetry, colour decoration, etc.

While the appearance of the elevation of the blocks of eight cottages here given is improved by the introduction over the doors of hoods with wrought-iron stays, the erection of two large posts with a horizontal cross-piece as a support for honeysuckle or climbing rose is not only cheaper, but is in the circumstances a more suitable way of adorning what is of necessity a plain elevation. The steps before the doorway should then be cut short, without returns, to enable the plant to be set as near as possible to the posts. The two steps are a necessity in order to secure good ventilation beneath the floors, where boarded floors are used.

THE TRUE TEST OF ECONOMY.—Many jerrybuilt houses are the work of the speculating builder, who immediately on their completion sells them to one who buys to sell again. He secures himself, but with such inferior property someone must in the end suffer considerable loss. To say that a house has been built on economic lines because the cost of erection has been the lowest

possible is to mislead, for the true test of economy is that which will take into account the cost of repairs at the end of ten years, and its then value. In designing cottages for an estate or garden city, the architect will therefore realise the importance of building dwellings that shall be lasting. He will perceive that to take the low cost of the jerrybuilt house as a standard will only lead him ultimately into endless trouble and expense. He will not, to save a trifling initial cost, incur a heavier one later on, for in this case the ownership of the house does not change, and maintenance is not a thing that can be shirked.

FOUNDATIONS.—He will therefore see that there is a bed of concrete over the whole site, that his floors are well ventilated by allowing a good space between the under-side of ground floor joists and ground work, that the damp course is effectual, and also that plenty of air-bricks are inserted to ensure through ventilation, thus providing against the growth of dry-rot and all the expense it entails.

As the tenants of the cottages will doubtless be amateur gardeners who will probably add manure to the soil each year, the damp course is likely to get covered over ; it is therefore essential that this should be at least six inches above the ground when the cottages are built.

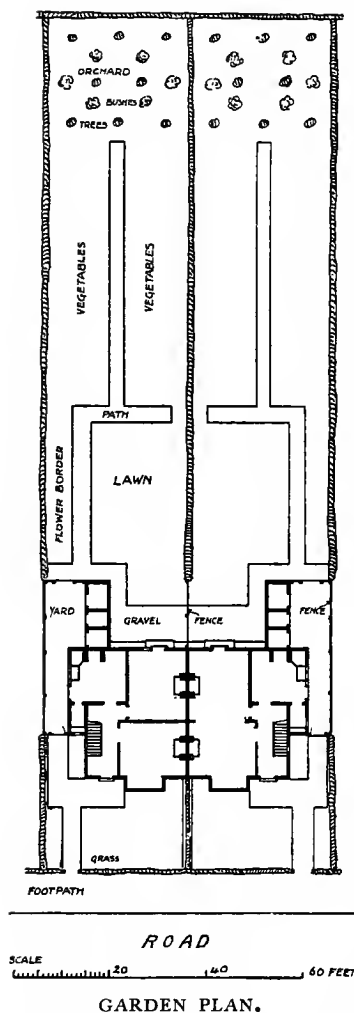
STOCK ARTICLES.—Economy may always be exercised by using what are *worthy* stock-articles of building, and in the case of a model village, where large orders will be given, the architect should make it his business to introduce new lines—moulds, doors, grates, mantels, etc.—the quality of which is first well proved. Stock sizes of building materials should be selected, and the planning should be adapted to them to avoid waste. For instance, joists should always be of such sizes as will prevent waste in the cutting of timbers. Joists are stocked in a definite number

of foot lengths. Rooms of 12 ft. 4 ins. width, with 4 ins. bearing allowed at each end, will require joists of 13 ft. lengths, in which case there is no waste ; on the other hand, rooms with 12 ft. 6 ins. width, with the same bearing, will require 14 ft. joist lengths, in which case 10 ins. in timber and the labour in cutting will be wasted, which the extra 2 ins. gained does not warrant ; 12 ft. 4 ins., 13 ft. 4 ins., 14 ft. 4 ins., and so on, are therefore preferable dimensions. Again, if the size of the joists be 9 ins. \times 3 ins., 27 ins. cube is obtained, which is not stronger than 11 ins. \times 2 ins., giving 22 ins. cube. If the latter be chosen, therefore, 5 ins. cube are saved. True, the house will be raised in height, but not sufficiently to appreciably increase the cost. This is only one instance of how selection of material may be profitably studied.

GENERAL.—In the example given the staircase runs between the houses, and gives them a good wide frontage, bringing the outer houses nearer to the extremity of the land, and enabling a more convenient division of the gardens. It will be noticed that the bath in these small cottages is the “Cabinet” patent, which is strongly recommended on account of its being easily shut up and stowed away (see page 51). The interior fittings are of the simplest and most inexpensive kind, such a thing as the ingle-nook, however pleasing and comfortable, being reserved for a better class of cottage. Ample cupboard room, nevertheless, is provided, and it should be noted that such conveniences as cloak rails, cup-rails and hooks, picture rails, etc., are fixed in all the cottages dealt with. Small gas cookers or grills should be included in all cottages, whether large or small. White’s patent steam exhaust should also be fitted in all cottages.

THE LAYING OUT OF GARDENS.

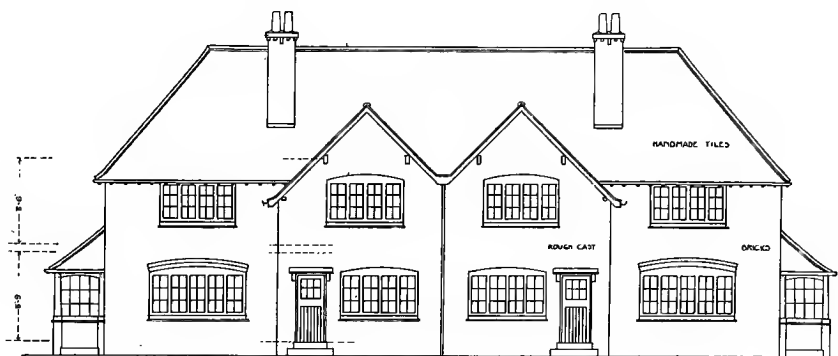
The garden, a feature of such importance in the model village, or garden city, should have no less care and attention in the planning than the house itself. The accompanying plan is one frequently adopted at Bournville where the aspect is suitable. The arrangement is modified in the case of the smallest cottages by the reduction or omission of turf. The bedding, with the various trees and shrubs supplied, is indicated on the plan.



accessible on either hand. With a south aspect, however, it is

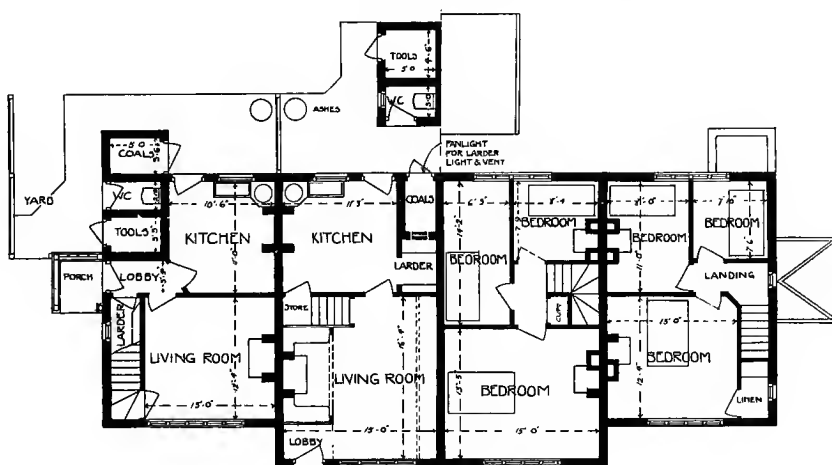
advisable to still continue the path down one side, the shadow of the adjacent hedge thus being cast not on the beds but on the path itself. It should be borne in mind that in laying out the beds all peas and beans, raspberry canes, etc., are best planted north and south in order that the whole length of the rows may get the sun. The tendency is for amateur gardeners to favour winding paths, by which space is lost, besides the arrangement being inconvenient. The curved line is rarely in harmony with the setting of the cottage, and curves, if introduced, should be gained rather in the planting of trees or flowers, curves in colour being more pleasing.

The number of trees, etc., provided in each of the Bournville gardens is :—eight apple and pear trees, assorted according to the nature of the soil, which, in addition to bearing fruit, form a desirable screen between houses which are back to back; twelve gooseberry bushes, one Victoria plum, six creepers for the house, including Gloire de Dijon and William Allen Richardson roses, wistaria, honeysuckle, clematis, ivy in a number of varieties, *Ampelopsis veitchii*, white and yellow jasmine, etc., according to the aspect, as well as one or two forest trees, so placed as to frame the building. Hedges of thorn divide the houses, and form road boundaries. The choice of trees and creepers is determined not only by the suitability of soil or aspect, but also by the general effect gained.



FRONT ELEVATION

SCALE OF FEET



GROUND PLAN

BEDROOM PLAN

BLOCKS, PAIRS, AND SINGLE COTTAGES.

PLATES XIV AND XV.

BLOCK OF FOUR COTTAGES.

IN the ascending scale we now come to a block of four, containing houses of two classes. The cost of each is approximately the same, and the advantages are about equal. The outside houses have a side entrance with lobby and outer porch, thereby making the front room quite private, while in the inside ones the front door opens into the room, which has, however, the advantage of being more spacious.

USE OF THE INGLE NOOK IN SMALL COTTAGES.—The introduction of an ingle nook in this latter secures to it a greater degree of comfort, and privacy from the road is also gained by the extension of the screen. Complete privacy may be secured by attaching a rod from the screen to the outside wall and dropping a curtain. The ingle is lighted by borrowed light from the half-glass door, the light passing through the glazed wooden screen. In this case the ingle nook may be said to be the natural outcome of the plan. The staircase in these inside houses is at the side of the ingle, and affords space beneath for a cupboard, which is reached from the kitchen. The staircase in the outside houses is approached near the window of the living room, and admits of space in like manner for a larder, which is entered from the lobby.

VENTILATION.—It will be seen that the larder, in the case of the two middle houses, is arranged *within* the house, between the coals and the living room. Larders, wherever possible, should have an outside window, but in this case ventilation is very easily obtained in the following manner :—An inlet of a 9-in. pipe enters the larder on the floor level from air bricks in the front wall, while in the coals at the back a concrete division is inserted at a height of 5 ft. 6 ins. or 5 ft. 9 ins. (the ground floor of the house from floor

to ceiling being in this instance 8 ft. 6 ins.). Through a fanlight above the outside door of coals not only is light obtained, but, by means of a cord and pulley worked from the larder, through ventilation also, while there is no danger of the invasion of coal dust.

In both houses there is little space wasted. In the outside ones the living rooms are entered immediately from the lobby, and the bedrooms immediately from a small landing, while there is a useful closet over the stairs, entered from the front bedroom.

The projection in this block gives variety to the street, and is the natural outcome of the requirements of the houses. The type is self-contained, and privacy is secured to the householders by the introduction of the side entrance to the outside houses, and by the arrangement of the doorways to the middle ones at the remote ends.

MATERIALS.—Brindled bricks, hand-made tiles, and casement windows of wood are here used, and the brickwork of the kitchen is pointed for whitewashing, with a 4-ft. dado of paint. In these smaller cottages it is advisable to employ papers for interior wall decoration in preference to colour-wash, the latter being very soon soiled where there are children. Picture rails should be used in all cottages, if only to save the plaster.

ACCOMMODATION.—The accommodation of the respective houses is as follows:—

GROUND FLOOR.

	OUTSIDE HOUSES.	INSIDE HOUSES.
Living Room . .	12 ft. 4 ins. × 13 ft.	15 ft. × 16 ft. 4 ins.
Kitchen . .	10 ft. 6 ins. × 11 ft.	11 ft. × 11 ft. 3 ins.
Tools, w.c., and Coals.		

BEDROOM FLOOR.

First Bedroom . .	12 ft. 4 ins. × 13 ft.	13 ft. 3 ins. × 15 ft.
Second Bedroom . .	8 ft. × 11 ft.	6 ft. 3 ins. × 14 ft. 2 ins.
Third Bedroom . .	7 ft. 6 ins. × 7 ft. 10 ins.	7 ft. 9 ins. × 8 ft. 4 ins.
Linen Closet.		

Missing Page

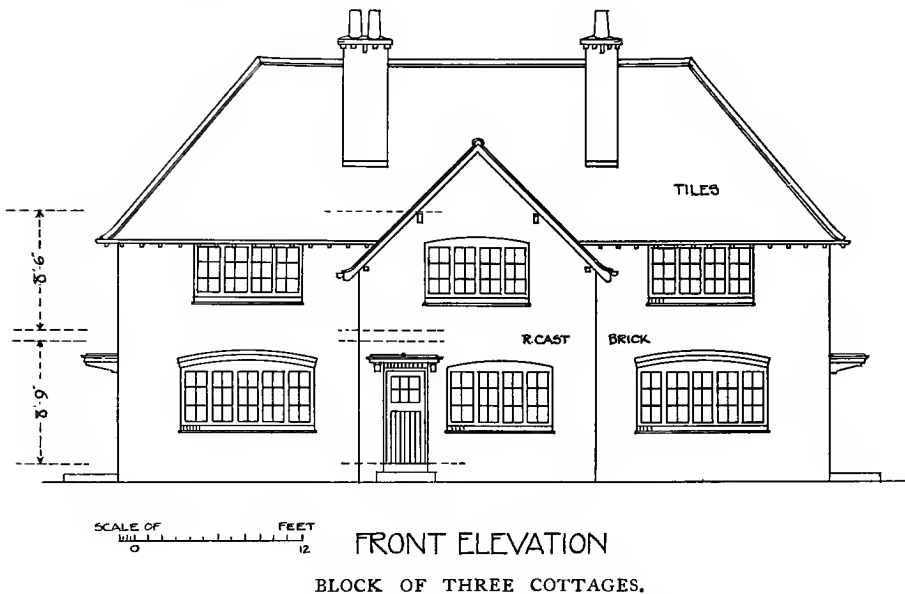
Missing Page



PLATE XV. . . .
BLOCK OF FOUR
COTTAGES. SEE
PAGE 25.

Total cost, including all extras and builder's profit, £872 per block, or £218 per cottage. Laying out of gardens, £10 per cottage.

Cubical contents, 48,295 ft. at $4\frac{1}{3}d.$ per foot cube, £872, or £218 per cottage.*



The elevation shown in the accompanying illustration is of a block of three cottages, the two outside ones of which are similar to those shown on the foregoing plan. This is an example of how the same plan may be repeated with varied effect, or where there is not sufficient land for four.

* *NOTE.*—As most of the examples given have been built by the Bournville Village Trust, it should be noted that the figures stated include in all cases an addition to the net cost of $3\frac{3}{4}\%$ as builder's profit.

Where there is any marked difference in the price per foot cube not accounted for by more complicated planning, or by the better quality of materials, this is due, not only to the fluctuation of building prices during the last few years, but also to the variation in the cost of building at different periods of the year.

The extras include fencing, garden gates, etc.

PLATES XVI AND XVII.

PAIR OF COTTAGES.

VARIATION OF FORMER PLAN.—The plan shown in Plate xvi. and illustrated in Plate xvii., is of a pair similar to the *outside* cottages of Plate xiv. This again shows how it is possible to play on the same plan in the building of a village, and so gain the desirable variety of elevation. The roof is hipped and covered with pantiles. A bay window is introduced in both the storeys, with rough-cast between. A rainwater cistern to store all roof water is placed over the coals, which projects from the main block. A greater privacy is obtained by this slight projection, without interfering with the light at the back. The chimneys are grouped together in the centre, there being only one stack to both the houses, which is carried to the highest point of the roof.

Total cost of cottages built to this plan, including all extras, £230 per cottage.

Laying out of gardens, £10 per cottage.

Cubical contents, 22,000 ft. at 5*d.* per foot cube, £460, or £230 per cottage.

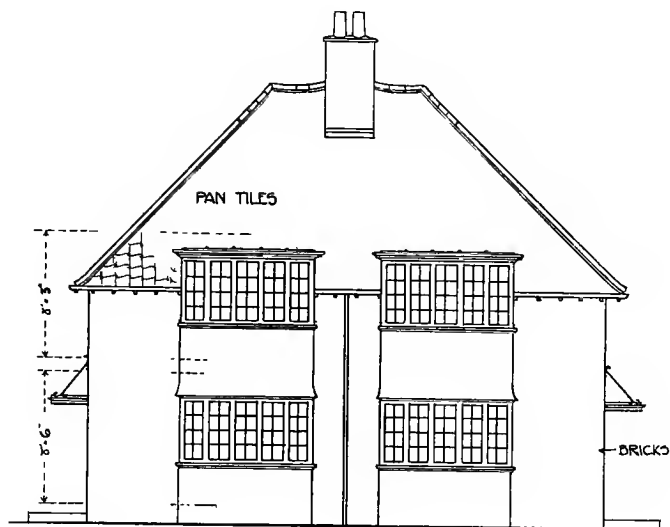
PLATE XVIII.

PAIR OF COTTAGES.

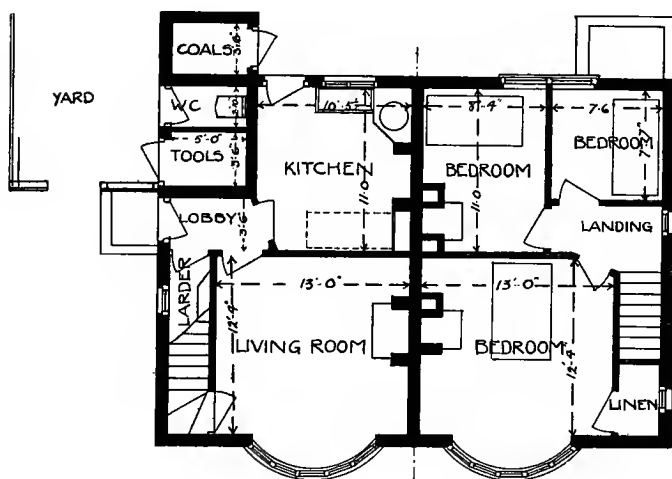
The plan and elevation shown on this plate are of an alternative arrangement to the last. The houses have an entrance at the front and an extended larder, owing to the staircases ascending from the lobby. The fireplaces are arranged in the corners of the rooms.

PLATE XIX.

The view here given shows three pairs of cottages built to the plan shown on Plate xvi., and illustrates how a variety of elevation may be gained by adding bays, dormers, etc., and by using differing materials.



FRONT ELEVATION

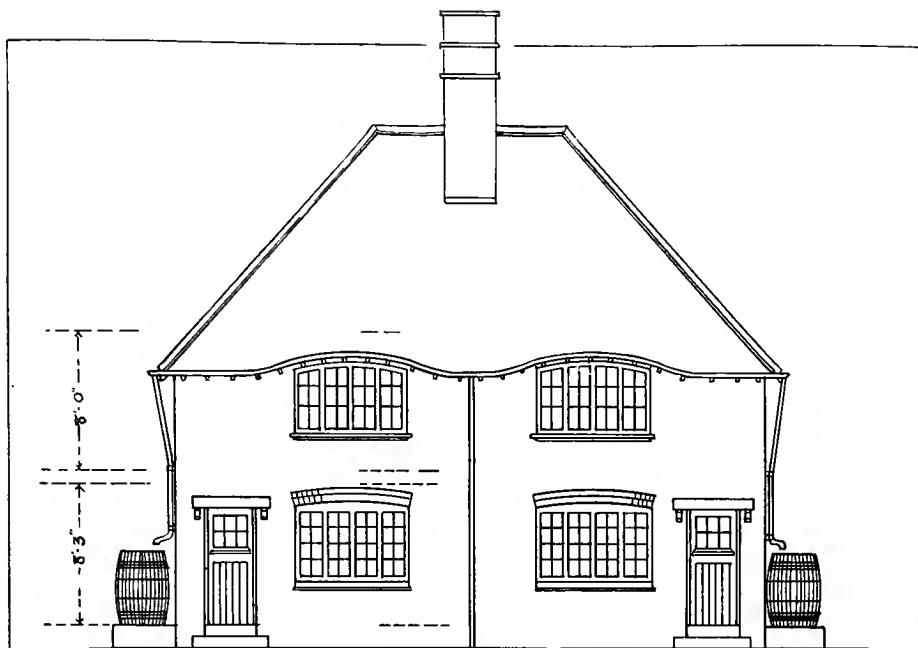


GROUND PLAN BEDROOM PLAN

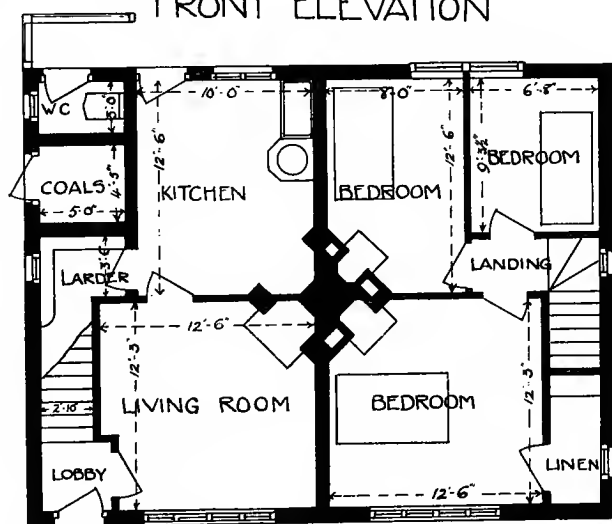
SCALE OF
0 12
FEET



PLATE XVII.
PAIR OF COT-
TAGES. SEE
PAGE 28.



FRONT ELEVATION



GROUND PLAN BEDROOM PLAN

SCALE OF
0 12 FEET



PLATE XIX.
SEE PAGE 28.

DESCRIPTION OF PLATE XX.

PLATE XX.

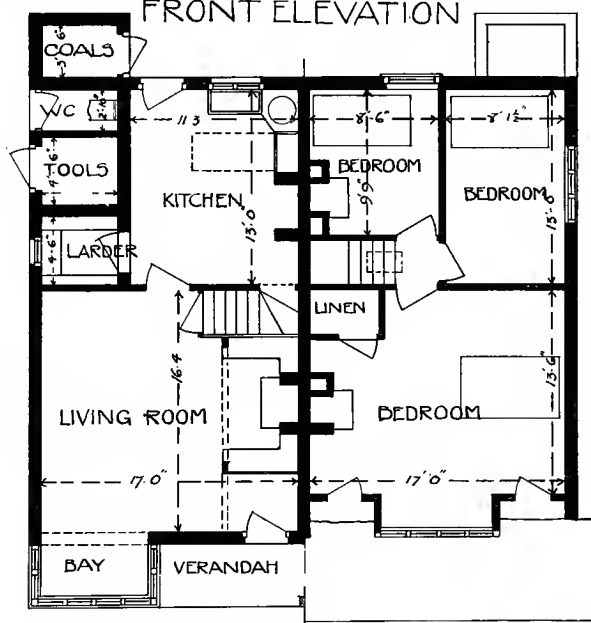
PAIR OF COTTAGES.

VARIATION OF FORMER PLAN.—This plate shows the development and variation of the *inside* houses of the block of four shown on Plate XIV., with a superior arrangement of larder, and with projecting coals. The long sloping roof has been hipped back to give a pleasing line, especially in perspective.

THE LONG SLOPING ROOF.—The long sloping roof, a feature frequently introduced at Bournville, has several advantages. If it were not employed, and the front walls were carried up level with the ceiling line of the bedroom, the proportions of the elevation would not be so happy, while an additional expense would be incurred by the extra brickwork. Such a height, moreover, would be wholly unnecessary. In the case of cottages with the long sloping roof the height of bedrooms to the point of intersection of roof and wall need only be 5 ft. 6 ins. Ample ventilation is obtained by the simple insertion of a 9 in. by 7 in. air-brick on the outside wall, and a Sheringham ventilator or tobin tube within, about 5 ft. 6 ins. from the floor, the cost of the latter being about 3s., and of the former a little more. The long sloping roof can rarely be treated tastefully without boldly projecting the eaves. The projection gives a verandah in front of the house which affords a pleasant shelter. Wooden posts may be used as supports, and by training climbing plants up them, and allowing them to festoon, a really delightful summer bower may be formed. As the roof is broad, pantiles may be used with safety so far as good taste is concerned : bold roof, bold covering. By omitting the gutters at the dormer eaves a pleasing effect is gained, and gutters are quite unnecessary with an eaves projection. The cheeks of the dormers should be dressed with lead. The cottages in question are whitewashed, and



FRONT ELEVATION



GROUND PLAN BEDROOM PLAN

SCALE OF
 0 1 2 3 4 5 6 7 8 9 10 11 12
 FEET

have a tarred plinth of about 2 ft. to prevent the unsightliness of mud splashes.

THE LARGE LIVING ROOM.—In view of the gain to health of one spacious living-room over the parlour plan, a number of these cottages has been built in varying design at Bournville, and no difficulty has been found in letting them. There has been, however, considerable discussion with regard to their convenience to the artisan in other districts where they have been introduced. Although cottages in the past had no third room, there having been, as here, one large comfortable room (often with the ingle nook) and a small kitchen at the back—all the accommodation really required—yet at the present time many artisans are not content without the useless parlour, which they appear to think adds dignity to the house, but which is used by them chiefly as a store-room for gim-cracks. There is, perhaps, a reasonable objection to a single large living-room on the part of a particular class who let the front room to a lodger. Nevertheless, for a model village or a garden city it is strongly recommended that the plan should be adopted freely, and the preference for the useless front-room in small cottages discouraged.

Total cost of the example given, including all extras, £268 per cottage.

Laying out of gardens, £10 each.

Cubical contents, 28,587 ft., at $4\frac{1}{2}$ d. per foot cube, £536, or £268 per cottage.

Instances of the last two types of cottages dealt with appear in the view given on Plate iv.

PLATE XXI.

PAIR OF COTTAGES.

THE smaller cottage shown here is planned on similar lines to the foregoing, but with the additional accommodation of an attic, and bay windows to the two storeys. This is an instance of how a smaller cottage may be joined to a larger one in treating a corner site, the larger one on the corner giving importance to each road.

PLATES XXII., XXIII., I. (FRONTISPIECE), XXIV., XXV., AND XXVI.
BLOCKS OF FOUR.

THESE plates show examples of cottages in blocks of four rather larger in size than the last type, and treated in different materials.

Plate xxvi. shows the details of the cottages on Plate xxv.



PLATE XXI.
PAIR OF COT-
TAGES. SEE
PAGE 32.



PLATE XXII. . .
BLOCK OF FOUR
COTTAGES. SEE
PAGE 32. .

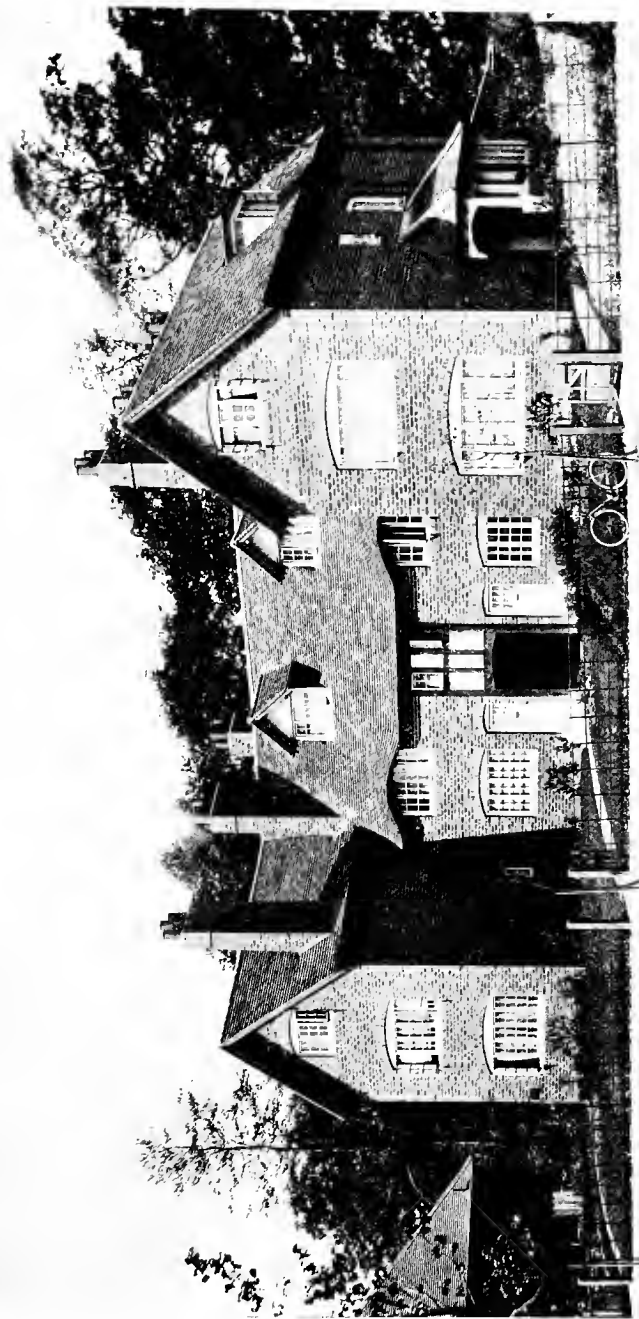


PLATE XXIII.
BLOCK OF FOUR
COTTAGES. SEE
PAGE 32.



PLATE XXIV.
BLOCK OF FOUR
COTTAGES. SEE
PAGE 32.



PLATE XXV. . .
BLOCK OF FOUR
COTTAGES. SEE
PAGE 32 . . .



PLATE XXVI.
DETAIL VIEW.
SEE PAGE 32

G

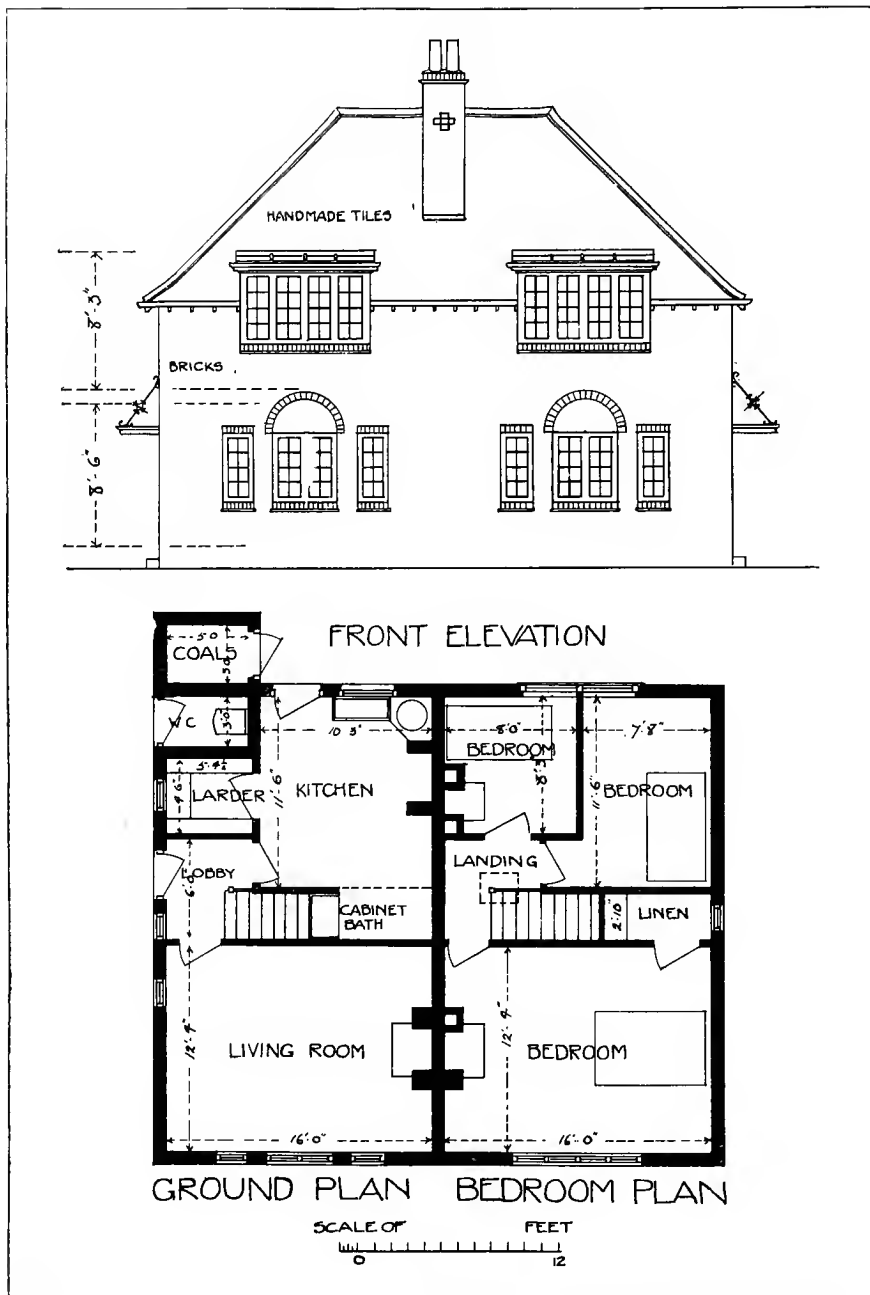


PLATE XXVII.
PAIR OF COT-
TAGES. SEE
PAGE 33. . . .

PLATE XXVII.

PAIR OF COTTAGES.

PLATE XXVII. gives the plan and elevation of a pair of cottages also having similar accommodation to those with the long sloping roofs shown on Plate xx. The cost, however, is here considerably reduced by each house having a side entrance, and by the omission of the ingle nook, verandah and bay, while the living room, though smaller, is not a passage room. By approaching the stairs from the lobby, not only is more privacy secured, but the space beneath is made available in the kitchen for a "Cabinet" bath, which is so placed as to occupy it when in use instead of projecting into the kitchen. The planning is simple and square, which, with the omission of bays and the introduction of plain casements, all helps to reduce the cost.

The accommodation is :—

GROUND FLOOR.

Living Room, 12 ft. 4 ins. \times 16 ft. Kitchen, 10 ft. 3 ins. \times 11 ft. 6 ins. Lobby.
Larder, w.c. and Coals.

BEDROOM FLOOR.

First Bedroom, 12 ft. 4 ins. \times 16 ft. Second Bedroom, 7 ft. 8 ins. \times 11 ft. 6 ins.
Third Bedroom, 8 ft. \times 8 ft. 3 ins. Linen Closet.

Total cost, including all extras, £250 per cottage.

Laying out of gardens, £10 each.

Cubical contents, 24,000 ft., at 5d. per foot cube, £500, or
£250 per cottage.

PLATE XXVIII.

PAIR OF COTTAGES.

THIS plate shows the plan and elevation of a pair of cottages having the parlour in addition to the living room and scullery. The living room, which should always be the larger, is here the full width of the house. The measurements are :—

GROUND FLOOR.

Living Room, 11 ft. 5 ins. \times 16 ft. 6 ins. Parlour, 11 ft. 4 ins. \times 13 ft. 3 ins.
 Scullery, Outside Larder, w.c. and Coals.

BEDROOM FLOOR.

First Bedroom, 11 ft. 4 ins. \times 13 ft. 5 ins. Second Bedroom, 8 ft. 6 ins. \times 11 ft. 5 ins. Third Bedroom, 7 ft. 8 ins. \times 8 ft. 6 ins. Linen Closet.

Total cost, including all extras, £230 per cottage. Cubical contents, 33,918 ft. at $3\frac{1}{4}$ d. per ft. cube. £460, or £230 each. (Built in 1899.)

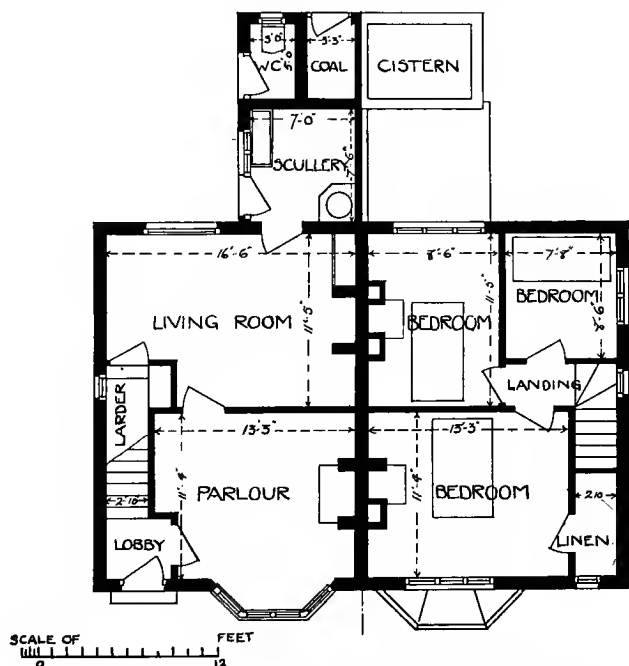
The stairs in this instance descend to the entrance lobby, but they may be planned the other way about in order to avoid the necessity of traversing the parlour to get to the bedrooms, and to insure children crying upstairs being heard in the living room or the scullery. This, however, would necessitate the cutting of 3 ft. off the large front bedroom, while the respective spaces for the larder and the lobby below would be reversed, the position of the former being undesirable.

Ordinary roofing tiles and common bricks have been used. The living room is boarded, and the scullery quarried.

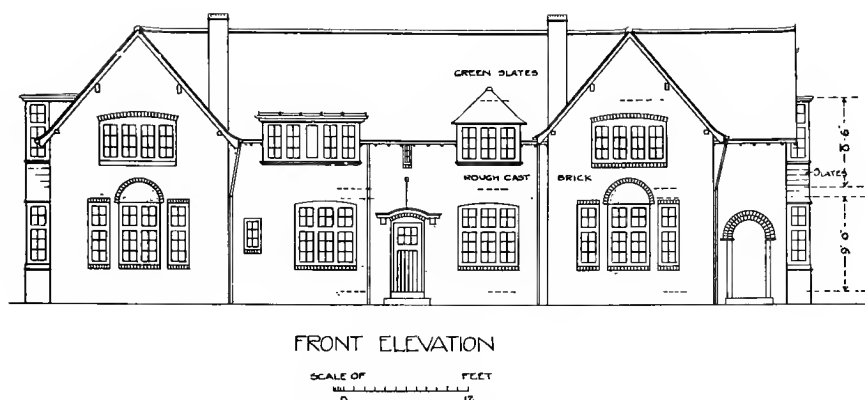
It might be pointed out that there is but little scope for variety of plan in these smaller cottages. The variations must be obtained in the treatment of elevations. As already stated, to build cheaply the main point is to get the walls as long and straight as possible.



FRONT ELEVATION



GROUND PLAN BEDROOM PLAN



BLOCK OF THREE COTTAGES.

PLATES XXIX. AND XXX.

BLOCK OF THREE COTTAGES.

PLATE XXIX. and the accompanying scale-drawing give the plan and elevation of a block of three cottages, a sketch of which appears in Plate xxx. The inner one occupies an exact third of the land, and is double fronted. By putting the inner one with its axis to the front, an equal garden space is given to all the houses without incurring a re-division of the land.

The inner and left-hand houses have practically the same accommodation, but the right-hand has several advantages: there is a wider hall, the living room is not a passage room, while the kitchen is reached from the hall, and the wash-house is entered from the yard.

Accommodation of *left-hand* and *inner* houses.

GROUND FLOOR.

Parlour, 11 ft. 4 ins. \times 15 ft. 3 ins. Living Room, 10 ft. \times 14 ft. 6 ins. and bay. Scullery, 10 ft. \times 6 ft. and recess for Bath. Coals, Tools, and w.c.

BEDROOM FLOOR.

First Bedroom, 11 ft. 4 ins. \times 15 ft. 3 ins. Second Bedroom, 7 ft. 6 ins. \times 14 ft. 6 ins., and bay. Third Bedroom, 7 ft. 5 ins. \times 11 ft. 6 ins. Fourth Bedroom, 9 ft. 6 ins. \times 6 ft. (middle house only). Linen Closet.

Cost of left-hand and inner houses, including all extras, £293 per cottage. (Built in 1904.)

The right-hand house, owing to the extra conveniences, works out at rather more.

In the middle house the recess between the range and small window makes a very convenient space for a writing table, especially if curtains are dropped from a rod to screen it off, its proximity to the range making it a warm and cosy retreat in winter. There is a bay window to the living room of the outside houses.

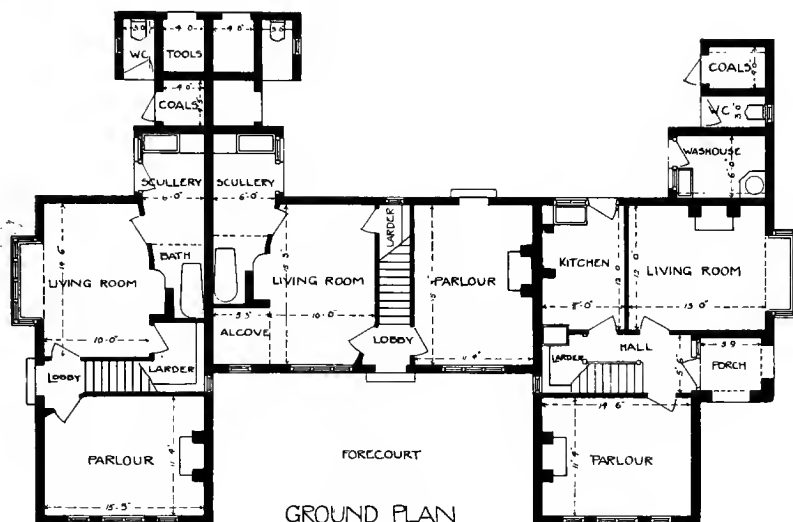
Two of the houses in this block are fitted with Cornes' Patent Combined Scullery-Bath-Range and Boiler, described on page 52, and the third with the "Cabinet" bath.

The elevation, with the forecourt formed by the projection of the two outside houses, may be made very pleasing. From the perspective it will be seen that the inner house is covered with roughcast, making an agreeable contrast with the outer ones of plain brickwork. Roughcast, while fairly economical, is very effective, and helps to brighten the forecourt. The projection of the outer houses affords a break, the abruptness of which does not attract attention, but which gives an opportunity of stopping the roughcast, which would otherwise have to be carried round to the back of the whole block.

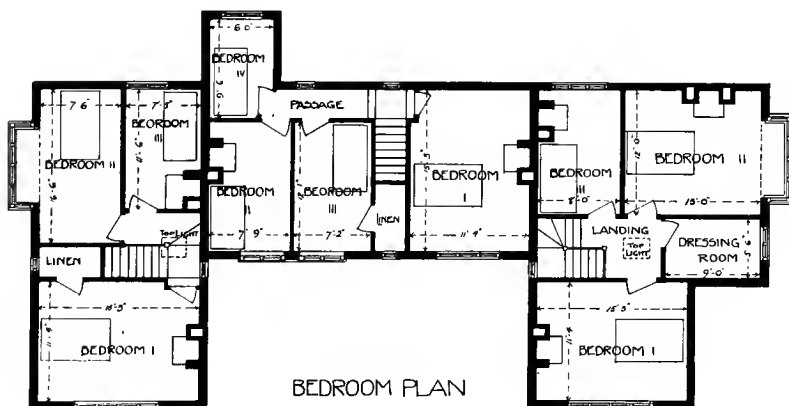
It is not advisable to introduce a variety of colour upon exteriors. Colour is best disposed in masses—that is, it should be treated broadly, not distributed in isolated portions, or in sharply contrasting tints. (See page 59.)

The roof of this block is of green slates of varying sizes, diminishing towards the ridge.

Aspect in the placing of the house is here studied as well as the site. The axis runs south-west and north-east, and the front commands a pleasing perspective of one of the principal Bournville roads, and an admirable view of the Lickey Hills in the distance.



GROUND PLAN



BEDROOM PLAN

SCALE OF FEET
0 6 12



PLATE XXX.
BLOCK OF THREE
COTTAGES. SEE
PAGE 35.

DESCRIPTIONS OF PLATES XXXI.—XXXIII.

PLATE XXXI.

PAIR OF COTTAGES (SHALLOW SITE).

THE view shown in this plate illustrates the treatment of a shallow corner site, the block being a pair of semi-detached, double-fronted cottages. The plan is similar to the middle house of the foregoing block.

PLATE XXXII.

PAIR OF COTTAGES.

A PAIR of cottages also planned on the same lines as the middle house shown in Plate xxix. and the foregoing shallow-site pair, but placed at right-angles instead of lengthwise, and occupying a corner position.

PLATE XXXIII.

PAIR OF COTTAGES.

AN example of a pair of cottages treated in the Dutch style.



PLATE XXXI. . .
PAIR OF COT-
TAGES. SEE .
PAGE 38.



PLATE XXXII.
PAIR OF COT-
TAGES. SEE
PAGE 38.

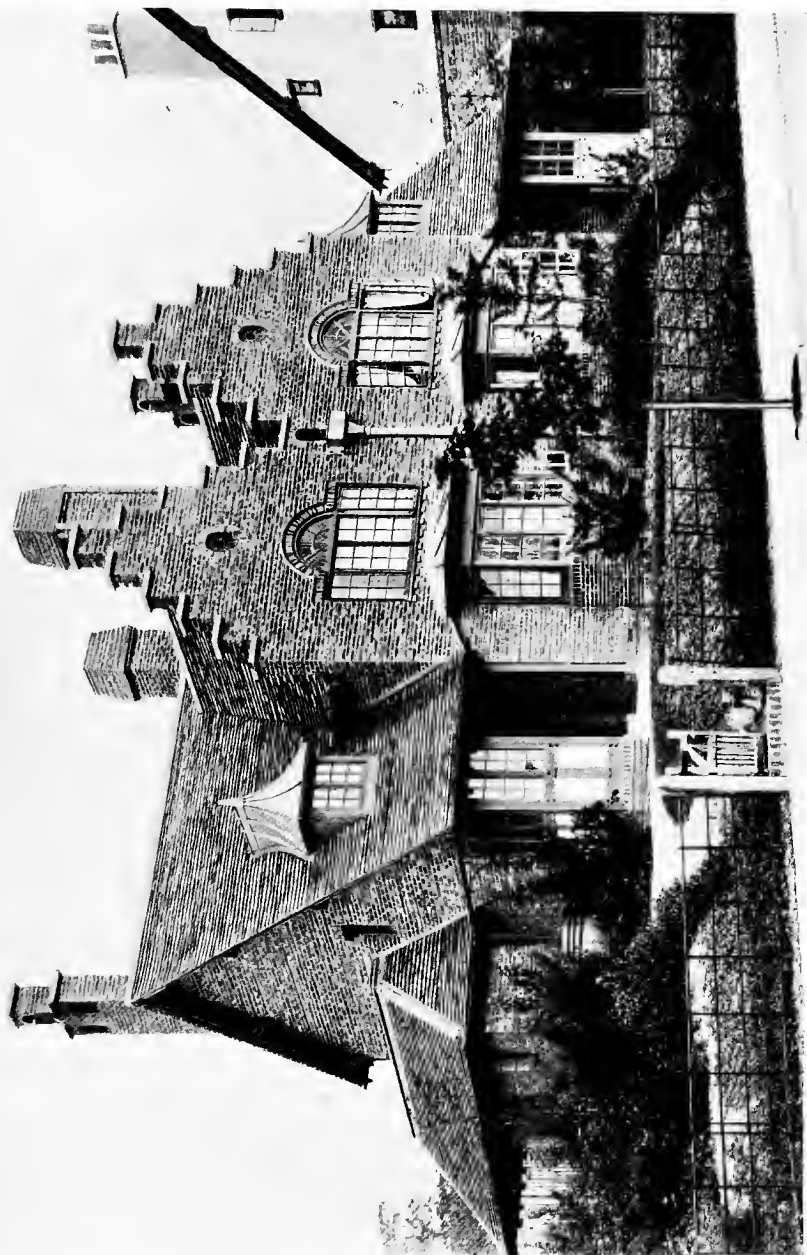


PLATE XXXIII.
PAIR OF COT-
TAGES, SEE
PAGE 38.

DESCRIPTION OF PLATES XXXIV. AND XXXV.

PLATE XXXIV.

PAIR OF COTTAGES.

THE accommodation of the pair of cottages shown in this plate is as follows:—

GROUND FLOOR.

Parlour, 11 ft. 4 ins. \times 13 ft. 6 ins., and bay. Living room, 11 ft. 6 ins. \times 14 ft. 5 ins. (French Windows). Kitchen, 10 ft. 8 ins. \times 12 ft. 3 ins. Larder. Porch, Hall, and Clock Space under stairs. Tools, w.c., and Coals (Enclosed yard).

BEDROOM FLOOR.

First Bedroom, 11 ft. 4 ins. \times 13 ft. 6 ins. Second Bedroom, 11 ft. 6 ins. \times 14 ft. 5 ins. Third Bedroom, 8 ft. 6 ins. \times 10 ft. 8 ins. Bath Room (hot and cold water).

Height of rooms: Ground floor, 8 ft. 9 ins.; first floor, 8 ft. 6 ins.

Total cost, including all extras, £375 per cottage.

Laying out of gardens, £12 10s. each.

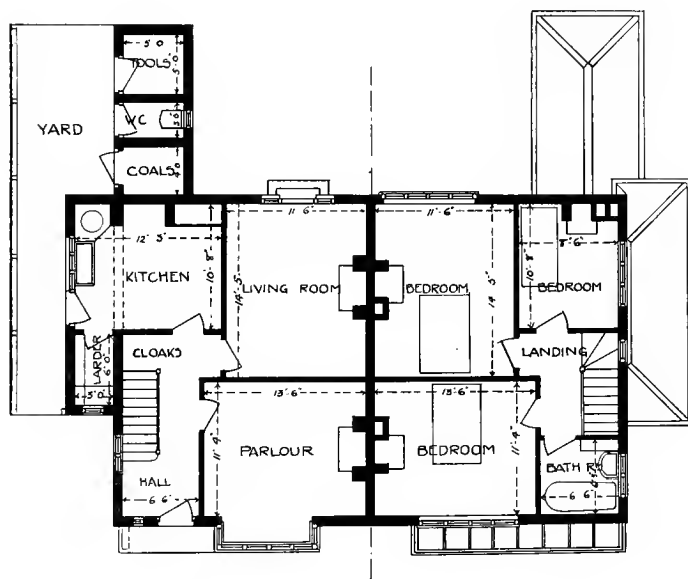
Cubical contents, 34, 285 ft., at $5\frac{1}{4}d.$ per foot cube = £375 per cottage. (Built in 1903.)

MATERIALS.—Whitewashed common bricks are here used. Whitewash is cheap and may be used very effectively, especially where there are trees in the background. The roofs and dormers are hipped, and covered with Welsh green slates and blue half-round ridges; the chimney-pots are buff-colour.

SILLS.—The sills, as in many of the other houses, are formed of calf-nosed bricks set on edge in cement, with two courses of tiles beneath, which form a drip under the sill, and with a backing of slate in cement. By bringing the window-frame forward to reduce the size of the top of the sill, damp and the driving in of rain are prevented. This makes an inexpensive sill, and adds to the homely appearance of the cottage.



FRONT ELEVATION



GROUND PLAN

BEDROOM PLAN



PLATE XXXV.
PAIR OF COT-
TAGES. SEE
PAGE 41.

INTERIOR WALL DECORATION.—The interior wall decoration is duresco throughout. Plain ingrain paper, of which there is a number of very cheap kinds now on the market, might be used with a frieze. A good effect is obtained by bringing down the white from the ceiling as far as the picture rail, which gives light to the room and improves its proportions.

The exterior woodwork is painted a Verona green.

FIREPLACES.—Fireplaces suitable for this or any of the six-roomed cottages are as follows :—

Front Room: interior grate, slabbed surrounds, tiled hearth, and white wood chimney piece. Living Room: iron tiled mantel-sham. Kitchen: 3 ft. range with white tiled coves and York stone shelf and trusses. Front Bedroom: 30 in. mantel-sham and tiled hearth. Back Bedrooms: 24 in. mantel-sham and tiled hearth.

The total cost of the whole should not amount to more than £12.

The scullery is lengthened by a projection in the nature of a bay. The outbuildings, which are carried to right and left of the pair, give privacy to the garden near to the houses.

PLATE XXXV

PAIR OF COTTAGES.

THIS plate illustrates one of several different treatments of the last plan.

PLATES XXXVI., XXXVII., AND XXXVIII.
SINGLE COTTAGE.

PLATE XXXVI. gives the plan of a single cottage occupying a corner site. It contains:—

GROUND FLOOR.

Drawing Room, 12 ft. 6 ins. \times 13 ft. 6 ins., and bay. Dining Room, 13 ft. \times 13 ft., and bay (French casements). Kitchen, 10 ft. \times 11 ft. Scullery, 8 ft. \times 10 ft. Larder. Porch and Hall, with Cloak Space under stairs. Coals, Tools, and w.c.

BEDROOM FLOOR.

First Bedroom, 13 ft. 6 ins. \times 15 ft. 9 ins. Second Bedroom, 11 ft. 6 ins. \times 13 ft. Third Bedroom, 10 ft. \times 13 ft. Dressing Room. Cupboards. Bathroom, with w.c. and Lavatory (hot and cold water).

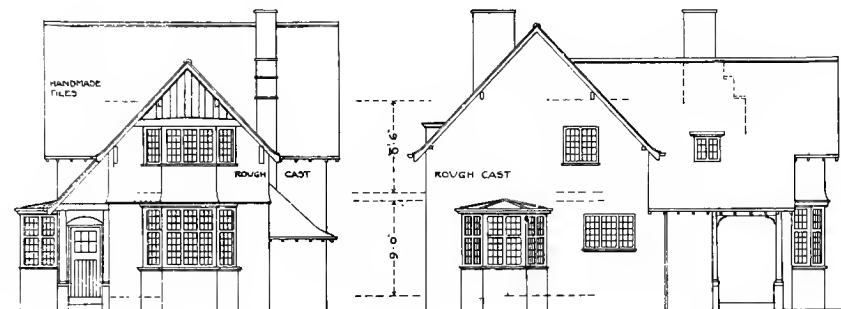
As will be seen, there is very little space wasted in the planning of the rooms.

The whole of the exterior is rough-cast. The front bedroom is enlarged and projects over the ground floor, giving a pleasant shade to the lower portion of the elevation, while the roof is continued over one side and carried down to form the porch. The gable is of half-timber framing.

The roof is covered with Hartshill hand-made tiles, which, while richly toning and colouring, have admirably stood the test of several years' hard weather, and have proved much more durable than the pressed tile used for some of the other cottages at Bournville.

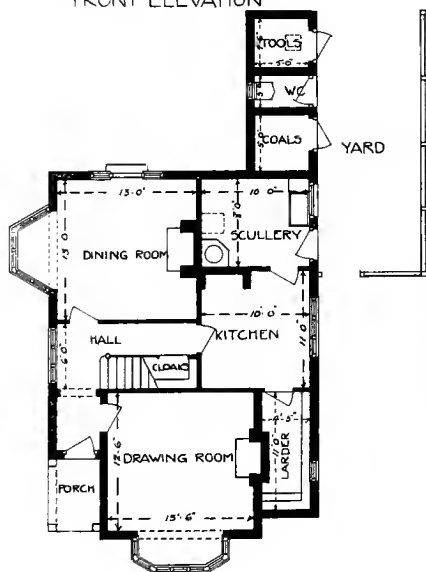
The plan of the cottage might be simplified by gabbling back and front, the roof thus covering the whole building, and having no valleys. The bedroom accommodation could be then increased by the addition of attics.

Two views of the actual example appear in PLATES XXXVII. and XXXVIII.

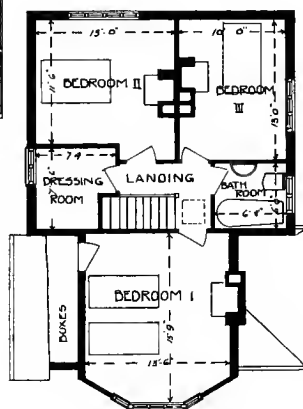


FRONT ELEVATION

SIDE ELEVATION



GROUND PLAN



BEDROOM PLAN

SCALE OF
0 6 12
FEET



PLATE XXXVII...
SINGLE COTTAGE.
SEE PAGE 42.

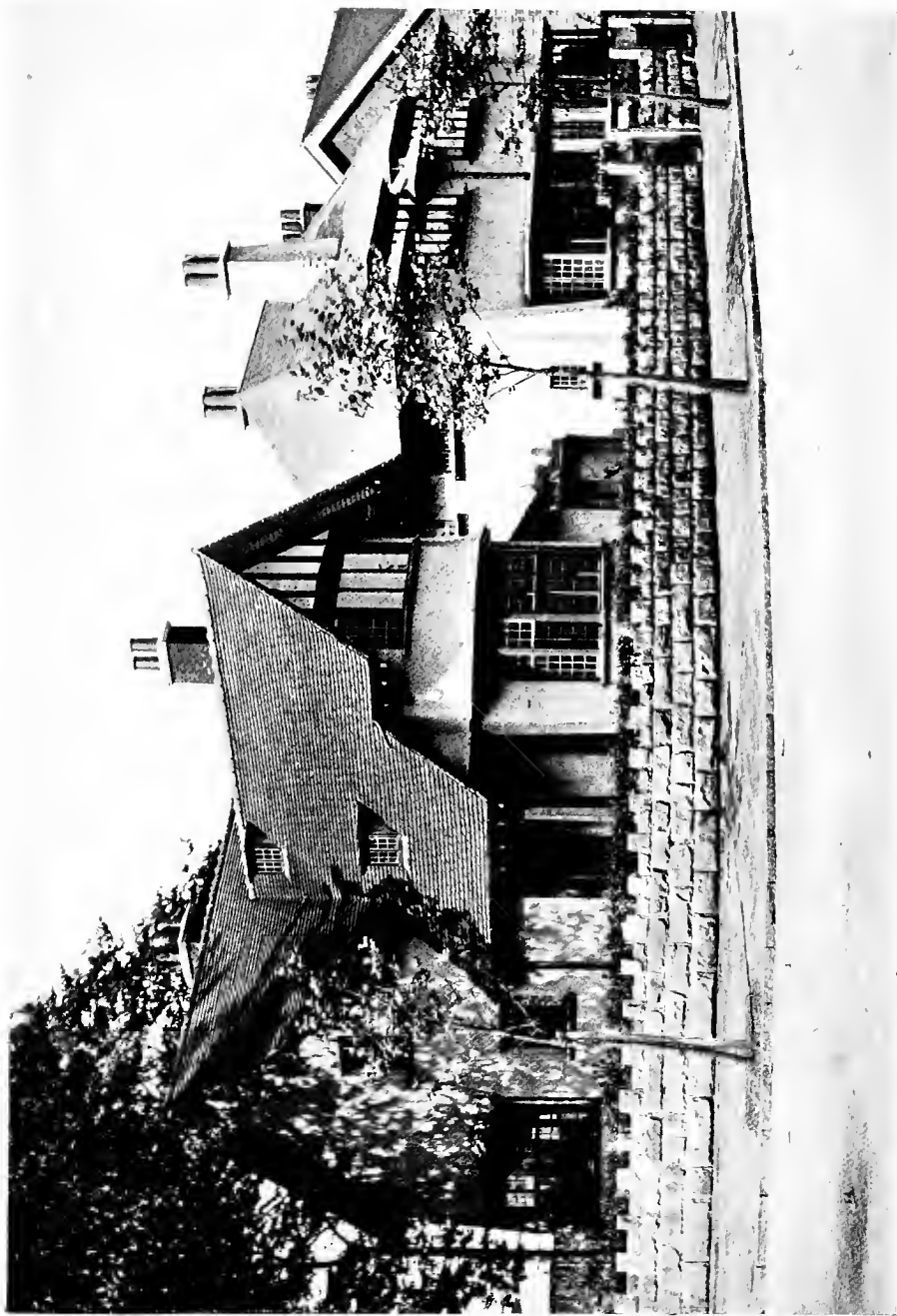


PLATE XXXVIII.
SINGLE COTTAGE.
SEE PAGE 42

DESCRIPTIONS OF PLATES XXXIX.—XLII.

PLATES XXXIX., XL., XLI., AND XLII.
SINGLE COTTAGE.

ANOTHER single cottage has accommodation as follows :—

GROUND FLOOR.

Living Room, including roomy alcove, 13 ft. 5 ins. \times 15 ft. 6 ins. Kitchen, 10 ft. \times 13 ft. 5 ins. Scullery, Larder, Tools, w.c., Coals, and Enclosed Yard.

BEDROOM FLOOR.

First Bedroom, 13 ft. 5 ins. \times 15 ft. 6 ins. Second Bedroom, 10 ft. \times 13 ft. 5 ins. Third Bedroom, 9 ft. 6 ins. \times 9 ft. 6 ins. Bathroom (hot and cold water) and w.c.

Spacious Attic (shown by dotted lines) and Boxrooms.

Total cost, in 1903, £540.

Cubical contents, 19,938 ft., at $6\frac{1}{2}d.$ per ft. cube, £540.

By hanging a curtain, the alcove shown in the plan may be made private for writing or studying, if required. It may also be used for meals ; and if a door communicates with the hall, the table may be laid by the maid unseen by the visitor, and the curtains afterwards drawn apart. Thus one of the disadvantages urged against the larger-sized houses with one large living room may be overcome.

MATERIALS.—The cottage is built of whitewashed common bricks, with tarred plinth, the roof being covered with Peake's dark brindled hand-made roofing tiles. It is without decoration, apart from what is afforded by the semicircular hood over the front door, the wrought-iron brackets supporting the gutters, and at the back a semicircular arch to give importance to the living room. There are shutters to all the ground-floor windows, which are made to bolt from within.

The view shown in PLATE XL. is of the back.

PLATES XLI. and XLII. show the staircase and dining room respectively.

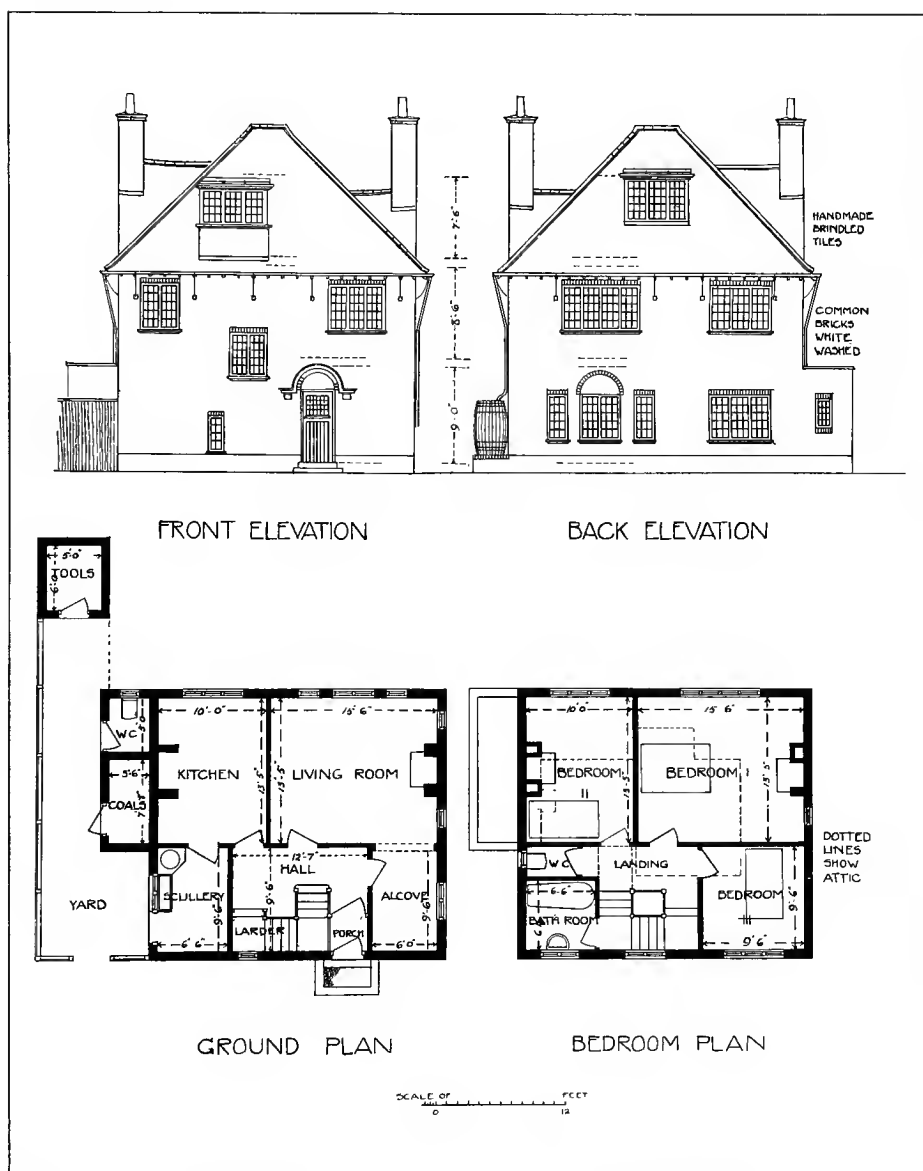


PLATE XXXIX. . .
SINGLE COTTAGE.
SEE PAGE 44. . .



PLATE XL.
SINGLE COTTAGE. .
BACK. SEE PAGE 44.



PLATE XLI. .
STAIRCASE OF
SINGLE COTTAGE.
SEE PAGE 44. .



PLATE XLII. . .
DINING ROOM—
SINGLE COTTAGE.
SEE PAGE 44. . .

DESCRIPTIONS OF PLATES XLIII. AND XLIV.

PLATES XLIII. AND XLIV.

SINGLE COTTAGE.

PLATES XLIII. and XLIV. show the plan and view respectively of another type of single cottage, with the following accommodation :—

GROUND FLOOR.

Dining Room, 13 ft. \times 19 ft., and small alcove. Drawing Room, 13 ft. \times 16 ft. 6 ins., and bay. Kitchen, 9 ft. 6 ins. \times 15 ft.
 Scullery, 8 ft. 6 ins. \times 9 ft. 4 ins. Larder, Coals, Ashes, w.c., and Enclosed Yard.

BEDROOM FLOOR.

First Bedroom, 13 ft. \times 13 ft. 4 ins. Second Bedroom, 12 ft. \times 13 ft., and large bay. Third Bedroom, 9 ft. 6 ins. \times 12 ft. Fourth Bedroom, 8 ft. 6 ins. \times 13 ft. 4 ins. Bathroom, with Lavatory and w.c. Large Attic, extending over almost the whole of the four rooms.

Total cost, in 1904, £640. Cubical contents, 25,077 ft. at $6\frac{1}{8}$ d. per ft. cube = £640.

By the arrangement of the stairs it will be noticed that additional space is secured to the dining room, forming a pleasant arched alcove.

MATERIALS.—The materials used are brindled bricks, Peake's hand-made roofing tiles, hips and ridges covered with half-round ridge-tiles, 6 in. half-round spouts with ornamental stays, projecting hood of timber, covered with lead and supported by two wrought-iron stays, red tall-boy chimney pots, doors painted Suffield green, window sashes and frames ivory white, and eaves, gutters and down-spouts lead colour.



PLATE XLIV. . .
SINGLE COT- . .
TAGE. SEE . .
PAGE 46 . .

PLATES XLV., XLVI., AND XLVII.
PAIR OF THREE STOREY COTTAGES.

PLATES XLV. and XLVI. give plans, and PLATE XLVII. the view of a pair of three-storey cottages of about the same accommodation, the left-hand having the following :—

GROUND FLOOR.

Dining Room, 11 ft. 6 ins. \times 18 ft., with French window. Drawing Room, 12 ft. 6 ins. \times 15 ft., with deep bay. Small Sitting Room, 7 ft. \times 11 ft. 2 ins. Working Kitchen, 11 ft. 2 in. \times 12 ft. 6 ins. Larder and China Pantry, Porch and Hall. w.c., Coals, Tools, and Enclosed Yard.

BEDROOM FLOOR.

First Bedroom, 12 ft. 6 ins. \times 15 ft., and deep bay. Second Bedroom 11 ft. 6 ins. \times 16 ft. Third Bedroom, 10 ft. 6 ins. \times 11 ft. 2 ins., with oriel. Bathroom, with Lavatory, w.c. Two Attics and Large Box Room.

The accommodation in the two houses differs owing to the aspect. If the two plans were identical, a considerable portion of the right-hand garden would be shut off from the south, and the larder would not face the north. Stress has already been laid on the necessity of considering aspect.

The left-hand is a corner house, and the projecting out-houses answer the double purpose of screening the garden from the road and protecting the house from the north wind.

In the adjoining house there is no small sitting-room, but an extra attic. The out-buildings are attached to the main building, and do not project into the garden ; the principal room is thus left open to the south.

MATERIALS.—The houses are built of common bricks white-washed, with a tarred plinth. There are half-timber porches, and the spaces between the bays and under the dormers are covered with rough-cast and decorated with parquetry. The rainwater

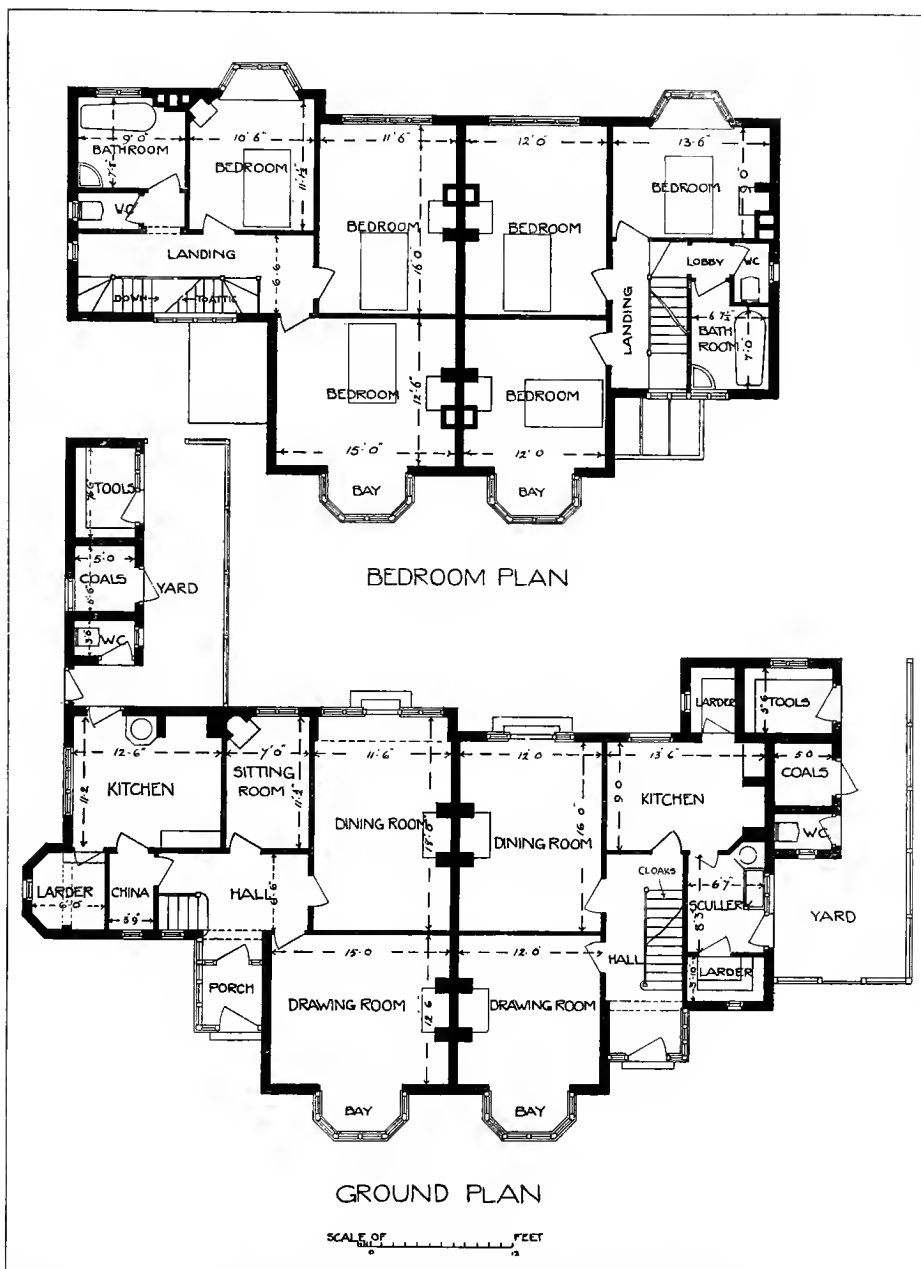
head in front is picked out in vermillion, the introduction of a very little bright colour giving a pleasant jewel-like effect. Peake's hand-made tiles, of dark colour, are used for the roofs, with half-round ridging, and ornamental iron stays support the gutters, which are of 6 in. half-round iron.

A pair of houses erected to a similar plan to that of the right-hand house in 1904 cost £610 each. The cost of the examples given work out more owing to the fall in the land, which necessitates very deep footings, and also to the plans differing in order to suit aspect and site.

PLATE XLVIII.

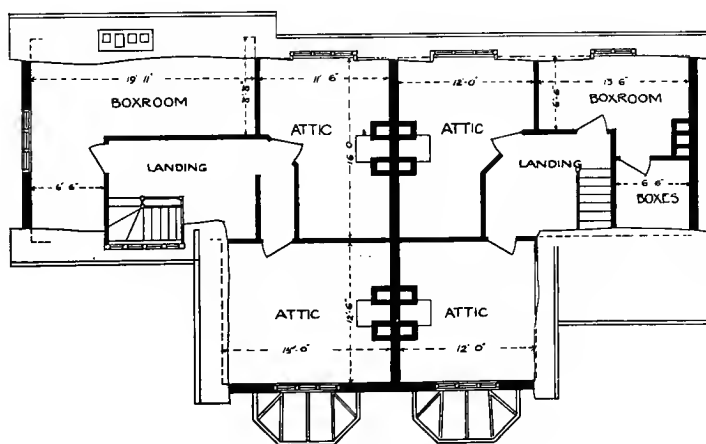
PAIR OF THREE STOREY COTTAGES.

PLATE XLVIII. gives the view of a pair of houses similar to the last, but somewhat reduced in size, and the treatment varied. Brindled bricks are used for the ground floor, and rough-cast for the upper storeys.





FRONT ELEVATION



ATTIC PLAN

SCALE 12 FEET



PLATE XLVII.
PAIR OF COT-
TAGES, SEE
PAGE 47

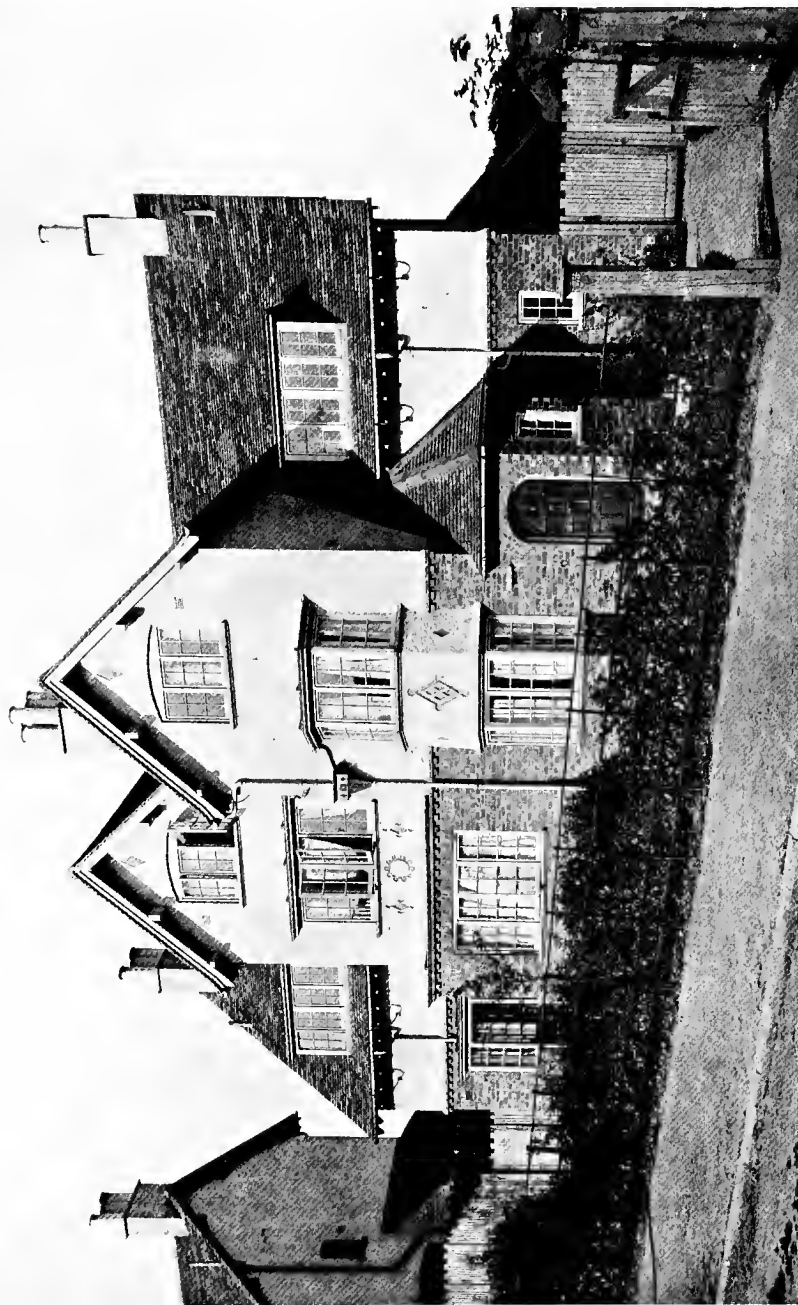


PLATE XLVIII.
PAIR OF COT-
TAGES. SEE
PAGE 48

PLATES XLIX., L., LI., LII., LIII., LIV., AND LV.

TWO PAIRS OF COTTAGES.

THESE plates illustrate two pairs of cottages of two storeys each, almost identical in plan, but differently treated.

The accommodation of the pair shown in PLATES XLIX. and L. is :—

GROUND FLOOR.

Dining Room, 13 ft. 6 in. \times 16 ft. and bay. Drawing Room, 13 ft. 6 ins. \times 16 ft. 3 ins., including ingle and bay window. Kitchen, 10 ft. 6 ins. \times 12 ft. Hall, with storm doors, 12 ft. 6 ins. \times 10 ft. Scullery, Larder, w.c., Coals, and Tool House.

Frontage, 15 yds.

BEDROOM FLOOR.

First Bedroom, 12 ft. \times 16 ft. 3 ins., and bay. Second Bedroom, 12 ft. 4 ins. \times 13 ft. 6 in. Third Bedroom, 10 ft. \times 10 ft. 2 ins. Fourth Bedroom, 9 ft. \times 13 ft. 6 ins. Boxroom, 8 ft. \times 10 ft. Bathroom, with Lavatory, and w.c.

The dining room is lighted by a small east window and a west bay window, the latter being covered by the roof of the verandah, which terminates in the bay window of the drawing room. Although the kitchen is a small one, it has the advantage of not being a passage room, the door from the hall to the kitchen and that from the kitchen to the scullery being arranged beside one another in the same wall. In these houses the windows have wooden frames and wrought-iron casements.

The principal rooms occupy the full width of the back, and the hall is therefore extended to admit of the doors of the two rooms being conveniently placed.

INGLE-NOOK.—The ingle which results from this arrangement has a beam with a shelf above continuing the line of the architrave, and the ceiling of the ingle is only 6ft. 6 in. high. There is a small light on one side.

The ingle-nook is shown on PLATE LI., and a view of the oriel on PLATE LII.

The pair of cottages shown in PLATES LIII. and LIV. have outer porches, whereby the size of the hall is reduced. A separate view of one of them is given on PLATE LV.

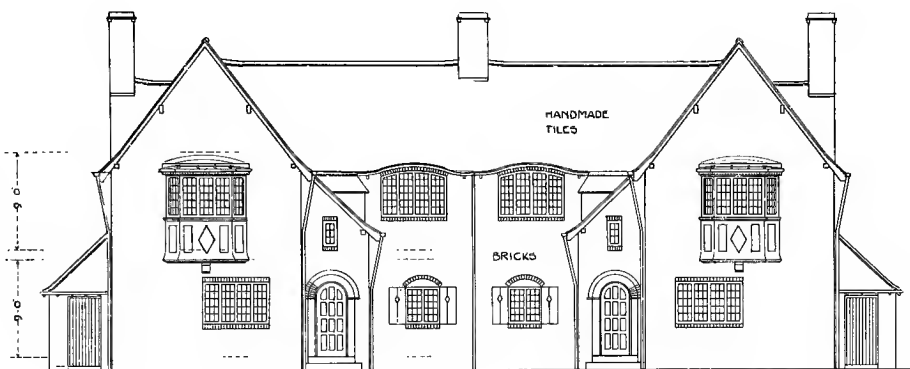
In this example, as in the former also, the outlook at the back of the house is to be preferred to that in the front, and as should always be done when the aspect is favourable, the principal rooms are placed at the back. There is in this instance a west prospect, with a delightful view of undulating woodland and distant hills. The forecourt affords a pleasant outlook from within the house. The lowness of the eaves has the effect of giving the pair a very homely and cottage-like appearance. The height of the bedrooms in the former example is 8 ft. 3 in.

PLATES LVI. AND LVII. SINGLE COTTAGE.

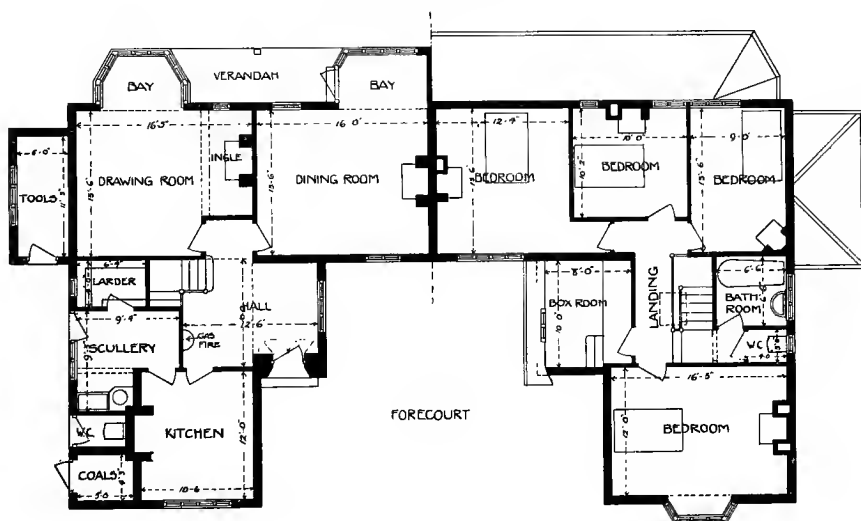
PLATE LVI. gives a single cottage of a plan similar to the last, with enlarged accommodation and somewhat different treatment, namely :—

Rough-cast from ground, with tarred plinth ; oriel window to first floor, with the introduction of a little colour in parquetry, which is also applied round the small window over the entrance, and a half-timber porch glazed with leaded lights, having coloured centres of rich glass. The cloak space is here converted into a china pantry.

A separate view of the porch is shown on PLATE LVII.



FRONT ELEVATION



SCALE OF 10 5 0 10 20 30 FEET.

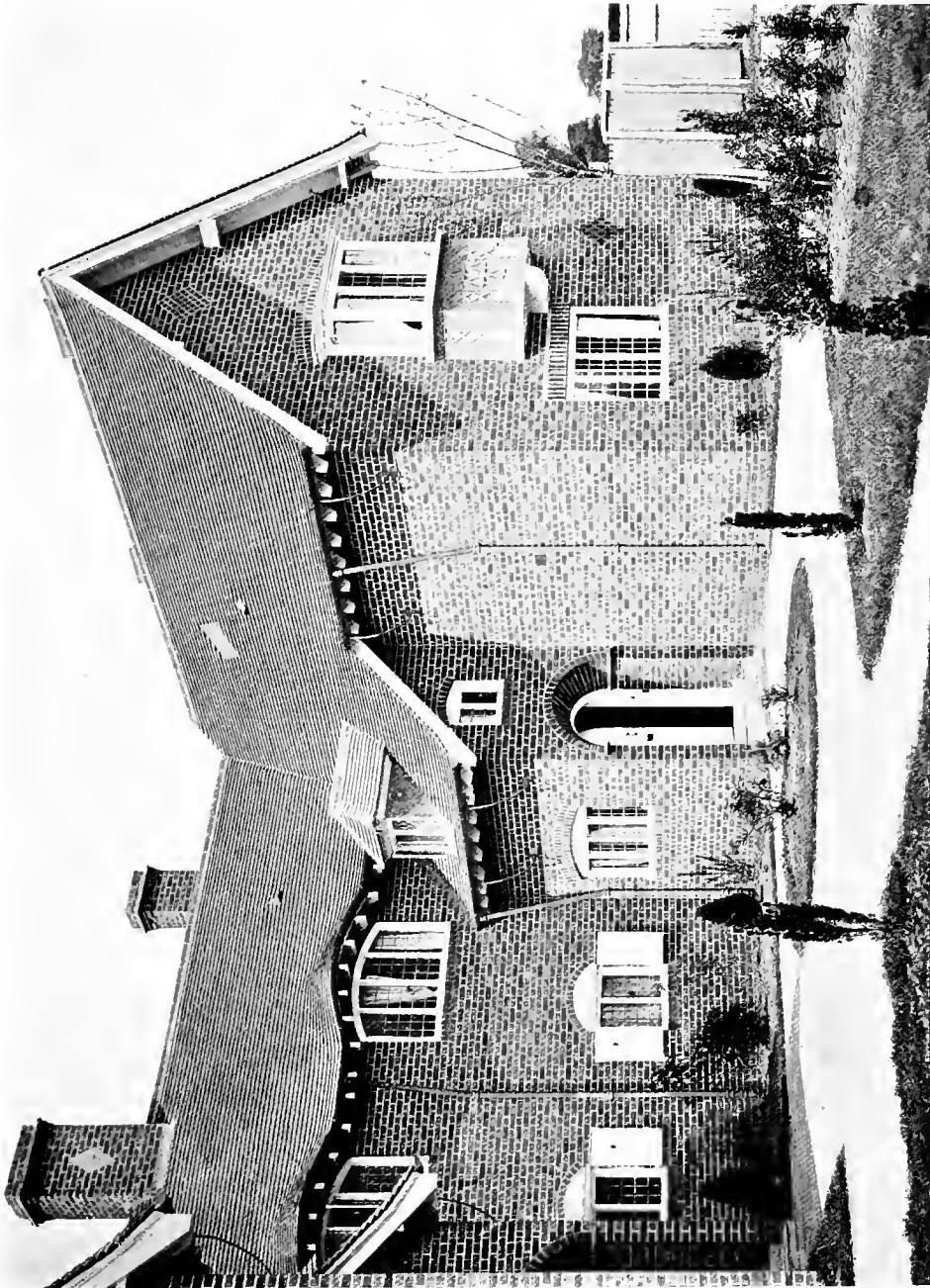


PLATE L.
PAIR OF COT-
TAGES. SEE
PAGE 49.



PLATE LI. . . .
COTTAGE INGLE.
SEE PAGE 49. .



PLATE LII.
DETAIL VIEW.
SEE PAGE 49



PLATE LIII. . .
PAIR OF COT-
TAGES. SEE . . .
PAGE 50.

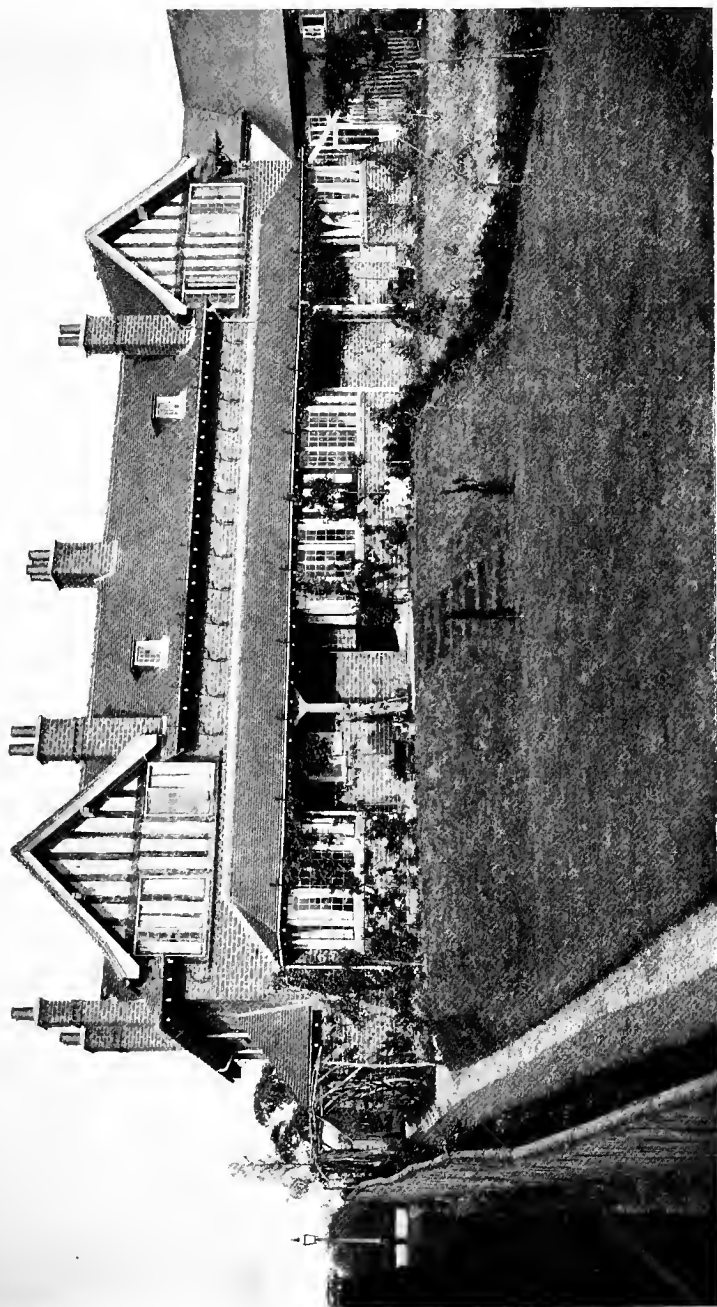


PLATE LIV.
PAIR OF COTTAGES—BACK.
SEE PAGE 50.

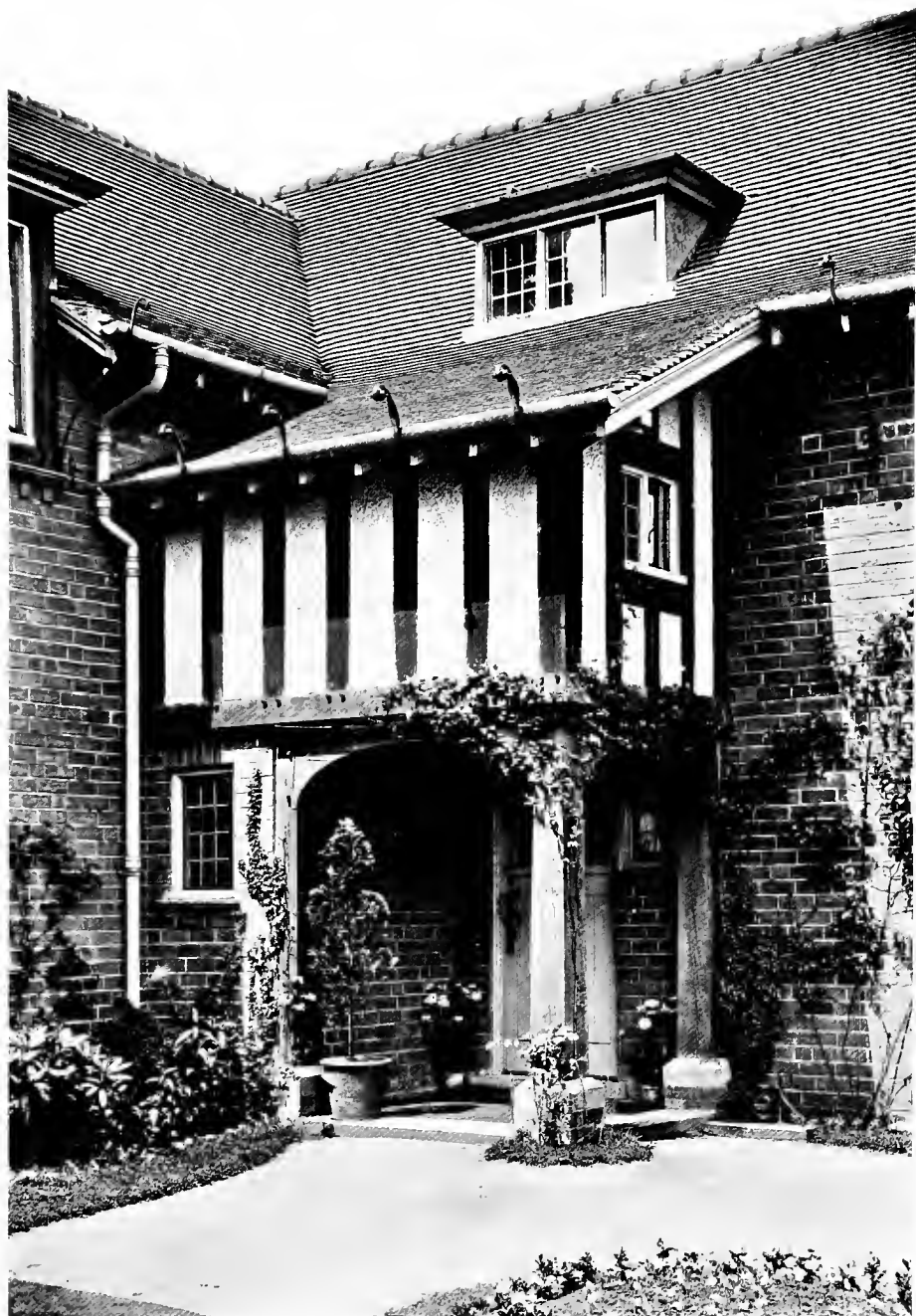




PLATE LVI.
SINGLE COT-
TAGE. SEE
PAGE 50.



PLATE LVII.
PORCH OF
SINGLE COT-
TAGE. SEE
PAGE 50.

GENERAL NOTES.

THE BATH.—The bath, without which no house is nowadays regarded as complete, should be supplied in all cottages, however small. At Bournville, wherever there is no bathroom, the bath is placed in the kitchen, this room being considered the most suitable: hot water is here at hand, and, as there is usually a fire in winter, it is both more convenient and comfortable than in one of the bedrooms, where the space can be ill-spared, especially where there are children. Even in the kitchens of these small cottages there is necessarily none too much space, and various devices have been employed to prevent the bath being an inconvenience when not in use. One way of disposing of it is to sink it into the floor near the hearth, the



THE PATENT ADJUSTABLE CABINET BATH.

boarded covering serving as a standing or draining board when the bath is in use. Another way, where there is a little more room to spare, is to fix it on the usual floor level, and make its cover serve as a settle or table. The intro-

duction of the Patent Adjustable Cabinet Bath, however, is better than either of these methods. In this arrangement the bath is hinged at the bottom of one end in order that it may be easily lowered from and raised back into the cabinet, where in its vertical



CORNES' PATENT BATH.

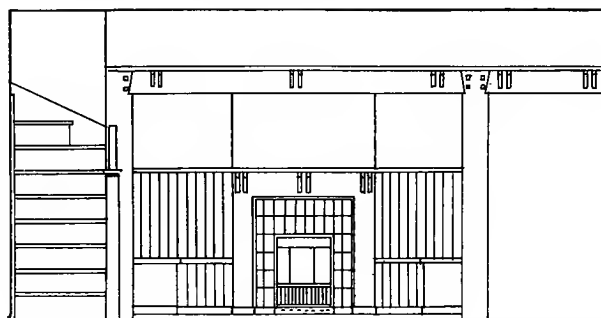
position it is no inconvenience when not in use. In the hinge a waste pipe is introduced. With this bath not only is there a gain of space, but the bath may be used with a saving of time and labour, and without fear of deluging the floor. Above the cupboard in which the bath is kept are convenient shelves. The cost of the bath and cabinet is about £3 5s. The illustration on the last page shows a bath of this kind fitted in one of the Bournville cottages.

Another patent bath used at Bournville in cottages of larger size but not sufficiently large to admit of a bathroom is Cornes' Combined Scullery-Bath-Range and Boiler. The patent utilises to the fullest extent the heat of the kitchen, so that, in addition to the

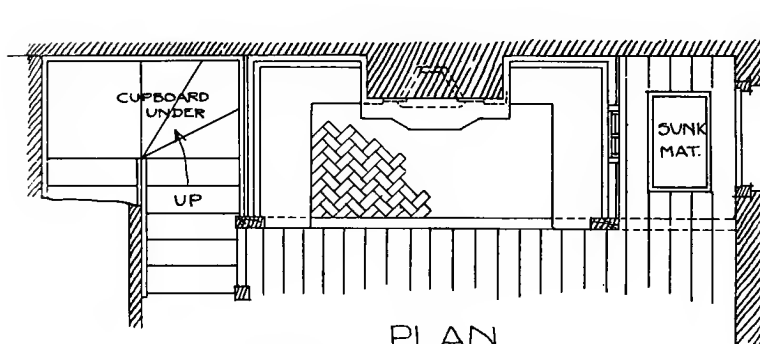
economy of space, there is a further economy of fuel to the householder. The heating and cooking range forms a great part of the division between the kitchen and scullery-bathroom, the flue being coursed over the head of the bath. In the centre of the range is the grate, with an oven on one side and on the other a twelve-gallon boiler, in which water is kept hot for domestic purposes. Boiling water can be obtained by raking down live fuel into a small secondary grate under the boiler through a small hole made for the purpose. If desired, clothes can be boiled in the boiler and access to it from the scullery may be gained by opening a curved door. Owing to its open construction there is no risk of explosion. Further developments have been made in the way of providing a folding door in front of the range, which will shut off the boiler from the kitchen when necessary. The scullery-bathroom, which contains about 36 superficial feet, is fitted with a full-sized iron enamelled bath, supplied with hot water through a pipe from the range boiler and with cold water from the cistern, or through a shower-bath sprinkler fixed overhead, so that this latter luxury can be enjoyed by simply turning the tap. The introduction of White's Patent Steam Exhaust effectually prevents the steam from permeating the other rooms of the house. An illustration is here given showing Cornes' patent fitted up.

THE INGLE-NOOK.—Like many old-time features which have been revived during the last few years, the ingle-nook has perhaps been a little overdone. The ingle is intended to serve as a cosy retreat in a spacious room, and it should not be introduced in a room the size of which is insufficient to warrant its existence. On this account it is usually undesirable to provide ingle-nooks in

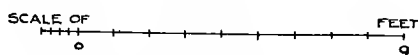
cottages, except in those with the large living-rooms. Comfort should always be the object in view in the construction of the ingle, but in many modern examples this is sacrificed to over



ELEVATION



PLAN



SMALL COTTAGE INGLE.

elaboration and that straining for effect which shows that it was designed for ornament and not for use. No doubt an effect is sometimes gained, but the usefulness of the ingle is so far sacrificed that not infrequently one of most inviting appearance will be found to possess inadequate seating accommodation even for a single person.

The ingle, to be comfortable and useful, should not be less than 10 ft. 6 ins. in width by 4 ft. 6 ins. in depth. If it is smaller lengthways the heat from the fire will be too great, while if less deep there will be insufficient accommodation at the sides for two persons without projecting the seats into the room, which can only be satisfactorily done, perhaps, when the side of the ingle is in line with that of the room. A reasonable height is 6 ft. 6 ins. A pleasing way of treating a cottage ingle is to introduce a step up of about 3 ins., with an oak curb, and to tile or quarry the whole recess, as illustrated by the accompanying drawing. This ingle, which is provided in the pair of cottages with the large living-rooms dealt with earlier (Plate xx.), is constructed as follows:— $\frac{3}{4}$ in. match-boarding is nailed to studding, which has stout angle-posts to support the beam above; along the side of the latter a 7-in. by 1-in. shelf is carried by small wooden brackets; and the wood seats are of $1\frac{1}{4}$ ins. in thickness by 1 ft. 4 ins. from back to front, at a height of 1 ft. 3 ins. or less from the floor. The introduction of the ingle here is advantageous because some privacy is thus afforded in a room which is entered directly from the road. The match-boarding in this case is continued, and forms a framework for the tile-surround of the grate, giving an appearance of unity to the nook, while the simplicity of the material is pleasing and restful. The insertion of a mantelpiece different in character should be avoided. Some interest may be given to the centre of the fireplace by inlaying a little ebony in simple forms.

For drawing-rooms of larger houses the back of the nook might be panelled, the seat upholstered, and the panels filled in with tapestry. White wood looks well, and the fireplace might be built up with glazed brickettes. The ways of treating the more expensive ingles are so numerous, however, that it would be of little use making definite suggestions.

The ingle-nook of one of the larger cottages is illustrated on Plate LI.

CHIMNEYS.—The economy of grouping chimneys, and the desirability of carrying them to the highest point of the roof to avoid down-draughts, has already been mentioned. Generally speaking, for cottages, the simpler the chimneys are the better, and they should all be of hard burnt bricks, and the top courses built in cement. Diagonal chimneys are pleasing, but expensive, and on an estate should only be used occasionally. The Dutch chimneys, built up with corners of brick and covered with stone slabs or 12-in. drain pipes, as frequently seen in Holland and Belgium, are picturesque (see Plate XXII.), but care has to be exercised in their construction. Though they are often regarded as being liable to smoke, it may be pointed out that in many cases their employment is the only remedy for a smoky flue. Outside chimneys, it will be borne in mind, are always expensive. Chimney pots do not improve the appearance, but sometimes they are a necessity. In these cases the simple or plain tall-boys are recommended, and the colour—whether of soft red or buff—should be chosen to suit the design and colouring of the cottage. As a variation of these there are the beehive pots, the main idea of which is to keep down the height.

WINDOWS.—The casement window is cheaper than the sash window, and if beauty of effect is also to be considered its adoption is further desirable. Its simplicity and homeliness of appearance render it extremely fitting for the cottage. The old difficulty of

cleaning may now be obviated by a very simple device introduced at Bournville, that of causing the window to open upon a pivot in the centre, inwardly as well as outwardly, which admits of the outside of the fixed pane being easily reached by the hand.

The sash window, while objectionable in the form frequently used, may yet be made suitable for cottages; but it should be divided, and the proportions very carefully studied, say 9-in. by 11-in. panes, and the bars not less than 1 in. in thickness. It should be brought forward, showing the full width of the boxing. The sash window, however, necessitates an additional height to rooms.

BRICKS.—As regards bricks, it is well as far as possible to avoid those which are mechanically made (the pressed stock-brick) and to use the hand-made bricks from local yards. The brindled Staffordshire bricks are largely used at Bournville; they are very suitable for cottage building where the position is not too exposed. A pleasing variety of colour is introduced at a low cost, the tint being a bright cherry red blended with blue and purple, the blue being quite different from the dead blue-black of the vitreous brick. For inside work the common red wire-cuts are suitable.

It is a mistake to suppose that a good effect cannot be obtained by the use of the cheaper makes of bricks, a remark which also applies in the case of the London stock-bricks, so long as they are not uniformly selected; a good effect may be gained, for instance, by using a few of the darker ones indiscriminately with the cream-coloured ones. The splash of dark colour caused by the black ones coming together is by no means undesirable. A good example of

an effective use of these bricks is to be seen at Brewer's Estate, London.

ROOF COVERING.—The materials to be employed in roofing depend upon the style of cottage, and also upon the locality. The Bangor slates are cheap, and may be an excellent covering as regards durability; but unfortunately, in the class of cottages here dealt with, it is rarely possible to get so good an effect with them as with other kinds. They may be used, however, in the whitewashed cottage, so long as the smaller sizes are selected. Hand-made roofing tiles, and thick Welsh green and rustic Precelly slates may be recommended, as also the Peake's & Hartshill hand-made tiles.

Pantiles are cheap, but should only be employed on unbroken roofs having few valleys, where it is less difficult to keep out the wet. The roof should be steep, the angle in no case being less than 45 degrees. Before covering, care should be taken to ascertain whether they are of good manufacture, and whether they are porous or not. There are sometimes pantiles of an indifferent quality on the market; and, if this precaution is not taken, a roof may have to be stripped and re-tiled. Where they have been used and have afterwards been found to be bad they may be tarred, as are wood coverings in Norway and Sweden. It is always essential that the services of a practised layer of pantiles should be secured.

Gables should have damp courses under the coping to shield them from frost and wet.

Roof ridging should have careful attention, and it is wiser to suppress rather than to sharpen, the better to obtain that rustic appearance suitable to a cottage. Many fantastic ridges, with vulgar finials, are employed in the building of small suburban villas, of a more or less sharp-pointed character, and of a depth out of

proportion to the roof, which gives an unpleasant harshness to the general appearance. With the principle in view that the sky-line should be softened as much as possible, the brindled hand-made half-rounds should be used. With green slates, ridges of blue are the most suitable, as the colours harmonise. Experience will probably show that the red and buff ridges will not stand the weather so well as other kinds.

WALL SPACES : ROUGH-CAST—WHITEWASH—HALF-TIMBER.—However strong may be the temptation to introduce a variety of colour upon exteriors, it is advisable with cottages of the class dealt with to refrain from so doing. It is best to get the colour in masses, treated broadly—say, each house, as far as wall surfaces and roof are concerned, of one colour; for where the cottages stand close together, or even where they are semi-detached, sufficient contrast or relief is afforded by contiguous cottages treated differently, and in the case of a village a much better general effect is thus gained. On the other hand a good effect may be gained by giving a block of houses one tone throughout, matching the colour of the roof. The result is quiet and unobtrusive, and one which is very desirable in the cottage, where the features are necessarily brought close together. The tarred plinth, however, should always be used with rough-cast.

Half-timber should be used sparingly. While the bye-laws insist on a 9-in. wall being at the back, an unwarranted present and future expense is incurred by its use; and an effect equally as good, moreover, may be obtained with rough-cast, weather boarding, or whitewash. Half-timber one lives to regret, for the weather tells sadly upon it, and it demands constant repair.

A small cottage with an equal distribution of equal-sized windows is far from desirable. In a pair of cottages where there are four equal rooms facing the road, four equal windows would at first sight seem unavoidable, although such an arrangement would be fatal to the elevation. It is better to put a secondary light to the rooms at the extremities, getting additional light from the side, and thus by contrast giving greater importance to the larger windows in the centre, or even to omit the smaller windows, if adequate light can be obtained without them. The blank space might then be used for the training up of climbing plants. A certain number of windows is indispensable in a cottage, but, without stinting light, the aim should rather be to repress any superfluity. By the means suggested the view from the interior is sometimes agreeably varied.

Other features are dealt with in the descriptions of the various cottages to which they have particular reference.

THE LAYING OUT OF A MODEL VILLAGE.

LET it be supposed that land has been bought to be laid out as a model village. Whether this has been done by a company, a municipal body, or by an individual, is not material to the present purpose. Assuming that the selection of the site has had careful consideration, and that it is suitable for the development of a village, what is the first step? Before turning a sod the clearest conception of the finished scheme must have been formed. A dozen cottages or so erected before considering the future of the whole project may involve endless trouble at a later stage. The initial proceeding, therefore, is to make the general plan as complete and final as possible before commencing actual operations. Up to the present it has been the difficulty of co-operation among landlords, perhaps unavoidable, either by the piecemeal acquisition of land or the fitful demand for building, which has been the cause of many of our towns and suburbs being the reverse of pleasing. A century or so ago, when domestic architecture was a traditionally living art, and building was conducted less hurriedly, a certain charm of effect was no doubt obtained by this accidental or fitful extension, though convenience was certainly not always considered; but in the present day we should avail ourselves of the opportunity which a large or co-operative scheme offers for a convenient and agreeable disposition of buildings.

REGARD OF PHYSICAL FEATURES.—As the following suggestions do not refer to any specific example of land which is to be laid out as a model village, they can only be regarded as having

general applicability. The treatment of particular land depends upon its peculiar physical features. Land in a gently undulating district, for instance, must be dealt with in quite a different manner from that in flat country. The natural features themselves must be the basis of any satisfactory treatment, and they are to be made the most of, not only with regard to their intrinsic beauty, but also any material advantages they may offer.

ADVISORY ARCHITECT.—If a village is being developed by an individual in a private capacity it is not improbable, indeed it is very natural, that he will expect the general operations to be carried out in accordance with his particular taste or fancy, which, however, may happen to be far from practical or artistic, and his scheme is likely to suffer accordingly. So too in the case of an estate developed by a governing body consisting of men who are not qualified for the task, the possibility of failure is equally great. The best course is to employ an advisory architect about whose qualifications there is no doubt, who should work in conjunction with the surveyor from the outset. It may be suggested, now that the movement is making considerable progress, that the Royal Institute of British Architects should be asked to suggest an architect in such cases. A greater variety, however, in the plan and design of the houses might perhaps be secured by employing more than one architect. A man's ideas are liable to run in a groove ; and even if variation is introduced in detail there is likely to be a similarity in general character. Moreover, where two or more architects are engaged, a healthy rivalry might result in the designing of houses which shall fulfil all the conditions of convenience, compactness, and economy. The respective work of the various architects might be confined to particular streets, but a regular system of variation should be avoided. Method should not be too obtrusive or the arrangement too mechanical. The

advisory architect must be selected with judgment, for on him will devolve the working out of the general road-scheme, and this will demand more talent than the merely practical man possesses.

The caution already urged against doing anything on the estate without mature consideration expressly applies to the cutting of roads and the reservation of spaces. Given a map of our land, the fancy is not usually slow in disposing of it ; and it is only with the progress of operations, when a number of unforeseen demands make themselves disagreeably formidable, that it is seen how wanton this ready fancy has been.

THE SELECTION OF CENTRES.—The first questions to be decided are the number and positions of the centres, for it is to and from these that the most convenient and accessible connections must be planned, and the centres themselves should be reserved as the sites of parks, principal buildings, shops and the like

If the land is already entered by one or more turnpike roads which may not be diverted, these should guide the cutting of the new roads, and the chief centres of the village must be made as accessible as possible from them. If an existing road only approaches the land, and only one connection is deemed necessary, the connection should be constructed to suit the village as a whole, without partiality to any one extremity, always keeping the centres in view. It is nearly always better to work to the contour of the land, taking a gentle sweep in preference to a straight line.

The site of the chief centre, not forgetting to keep in view its general accessibility, should if possible be on the highest point of the village, such a position giving prominence over the whole, as well as a more imposing elevation and dignity to the principal buildings which are to be erected thereon. The nature of the buildings would depend altogether on the size of the scheme. In the case of a garden city they would possibly include council

to be preferred. In a block of three cottages a pleasing effect is gained by projecting or recessing the middle one, or putting it with its long axis parallel with the road, and so forming a forecourt in front.

SERVICE OF NATURAL ADVANTAGES. — Whatever natural advantages the land may possess, such as woods, pools, or streams (where they are not included in a park), should border, or be seen from, the road—that is if they merit the expense of road-making. Few things are more picturesque than a stream at the roadside (as at Tissington in Derbyshire), especially if spanned here and there by small bridges (as at Bourton-on-the-Water), and by their presence the road will be widened from house front to house front. The water of a stream should never be utilised for a manufacturing purpose where it afterwards flows through the village, except for generating electric power or other clean uses. If there is an avenue of old trees it should be secured for one of the roads.

SHOPPING.—The chief shopping will be best placed just without and surrounding the main centre, and that of less importance round the minor centres.

FACTORIES.—Supposing that the *raison d'être* of the village or garden city be one or more industries in which many of the inhabitants are employed, where, it will be asked, are the factories to be placed? Without a definite example of land, it is difficult to give a definite reply. Many things are essential to such sites—for instance, the adjacency of a stream, river, or railway—and if the manufacturer transfers his works to the country, he will rightly choose the most convenient and advantageous site for them that offers, and other arrangements will have to be made in concert with him. Nevertheless, the factory or factories should be as far as possible from the main centre, that is

on the village or city outskirts. The preferable position would lie between the north-east and south-west, for the prevalent south-west wind will then carry away the smoke in summer, when the villagers indulge in outdoor life, while the north and easterly winds of winter will carry it over the village when they are indoors. Screens of trees should be planted between the village and the factories as soon as possible.

PLOTS FOR HOUSES.—As to the treatment of the plots for houses: should the road cut into the land it need not necessarily be levelled, but taken as it is; the gables will thus present a desirable variation of level, and the ridge line will be less monotonous. An endeavour should be made, however, always to get the plots not less than 18 ins. above the level of the crown of the road, otherwise the drainage will be troublesome and expensive.

As soon as the house is erected, it is well to set hedges of thorn or beech, both along the roadside and between the houses. Until these are grown, the ordinary iron hurdle, or light-railed wooden fence, might serve.

It is advisable to arrange the building plots so that the houses on either side of the road do not come exactly opposite each other; the houses should be so arranged as to face the open space opposite.

GARDENS.—At Bournville the average garden-space allowed each house is 600 square yards, this being found to be about as much as the average man can well attend to. (This means there will be from eight to twelve cottages to the acre.) The laying out is done prior to the tenant's occupation of the house. A description of the way the Bournville gardens are laid out is given, with a plan, on page 23.

When the houses are placed at the end of the plot remote from the road, any hard and fast lines in the style of the garden should be avoided: apple and other fruit-trees, or an occa-

sional kitchen-garden, may be placed in a prominent position, for even the trim flower-garden might be varied with advantage. A preference has already been expressed for having the garden adjacent to the house rather than the allotment garden at a distance, but at the same time the latter plan may be sometimes forced upon us. Undoubtedly the rivalry that is encouraged among gardeners congregated together in allotment gardens is good and healthy, but the inconvenience to the household of the distance between home and garden would suggest the adoption of the former whenever it is possible, and even where there is an allotment there should still be a small plot adjacent to the house.

While endeavouring to get as much light and air space as possible in the village, it will frequently be found necessary to erect cottages in blocks of four, and sometimes of eight. In order to give adequate garden-space, even to small houses, and not in long thin strips, the frontage of the land will have to be broad; a rule should be made, therefore, of spreading the houses laterally by arranging the staircase of each house, not between the back and front rooms, but between the houses. This will bring the outside houses nearer to the extremity of the land, and will not only give each garden the desired straightness and breadth, but afford a greater breadth of view upon it from within.

In conclusion, it might be again stated that most of the remarks under this head—which are mainly arranged from notes taken or suggested during the planning and working out of the Bournville Estate—are broad and suggestive rather than insistent, and it is probable that the setting out of particular land will not admit of the adoption of many of the principles here laid down.

A List of Standard Books on ARCHITECTURE & ART, BUILDING, ETC.

Published & sold by B. T. BATSFORD
94, HIGH HOLBORN, LONDON.

Imperial 8vo, cloth, gilt. 31s. 6d. net.

GOTHIC ARCHITECTURE IN ENGLAND. An Analysis of the Origin and Development of English Church Architecture, from the Norman Conquest to the Dissolution of the Monasteries. By FRANCIS BOND, M.A., Hon.A.R.I.B.A. Containing 750 pages, with 1,254 Illustrations from photographs, measured drawings, and sketches, including 20 full-page Collotypes and 469 of plans, sections, diagrams, and moldings.

"This is, in every sense of the word, a great book. . . . It is a book that at once steps to the front as authoritative, and it will be long before it is superseded."—*The Athenæum*.

"A book of the very highest type, reliable and perfect in all respects, and magnificently illustrated. It is unquestionably the one book on Gothic Architecture, which must, as a matter of course, be possessed by every architect."—*The Architect's Magazine*.

"It brings the study of architecture up to the standard of modern ideals, and should, we expect, long remain the best book of its kind in the language."—*The British Architect*.

Large 8vo, cloth, gilt. 18s. net.

THE ARCHITECTURE OF GREECE AND ROME. A SKETCH OF ITS HISTORIC DEVELOPMENT. By WILLIAM J. ANDERSON, Author of "The Architecture of the Renaissance in Italy," and R. PHENÉ SPIERS, F.S.A. With 185 Illustrations from photographs and drawings, including 43 full-page Plates, of which 27 are finely printed in Collotype.

"As a comprehensive *résumé* of the history and characteristics of Greek and Roman architecture this must certainly be considered to be the best one-volume work of its kind that has yet appeared in our language."—*The Builder*.

"A vivid and scholarly picture of Classic Art."—*The British Architect*.

"It is such a work as many students of Architecture and the Classics have vainly yearned for, and lost precious years in supplying its place."—*The Architect*.

Large 8vo, cloth, gilt. 12s. 6d. net.

THE ARCHITECTURE OF THE RENAISSANCE IN ITALY. A General View for the use of Students and Others. By WILLIAM J. ANDERSON, A.R.I.B.A. Third Edition, with 64 full-page Collotype and other Plates, and nearly 100 smaller Illustrations in the text, from photographs and drawings.

"Mr. Anderson's book is of the greatest value, and enables the student, for the first time, to grasp the true significance of the movement."—*The Builder's Journal*.

"The book is evidence of earnest study."—*The Architect*.

"Should rank amongst the best architectural writings of the day."—*The Edinburgh Review*.

2 vols., large folio, half morocco, gilt. £8 8s. net.

LATER RENAISSANCE ARCHITECTURE IN ENGLAND.

A Series of Examples of the Domestic Buildings erected subsequent to the Elizabethan Period. Edited, with Introductory and Descriptive Text, by JOHN BELCHER, A.R.A., and MERVYN E. MACARTNEY. Containing 170 magnificent Plates (19 ins. x 14 ins.), 130 of which are reproduced in Collotype from photographs specially taken, and 40 from measured drawings by various accomplished draughtsmen. With 153 further illustrations of plans, details, &c., in the letterpress.

"One of the most remarkable and fascinating works in architectural illustration which has appeared in our time."—*The Builder*.

"A very sumptuous and beautiful publication."—*The Architectural Review*.

"Every admirer of the Renaissance in this country should possess a copy of this work."—*The Building News*.

2 vols., large folio, half morocco, gilt. £8 8s. net.

ARCHITECTURE OF THE RENAISSANCE IN ENGLAND.

Illustrated by a Series of Views and Details from Buildings erected between the years 1560 and 1635, with Historical and Critical Text. By J. ALFRED GOTCH, F.S.A., F.R.I.B.A. Containing 145 folio Plates (size 19 ins. x 14 ins.), 118 being reproduced from Photographs taken expressly for the work and 27 from measured drawings, with 180 further Illustrations of plans, details, &c., in the Text.

"The volumes are very beautiful in themselves, and a striking proof of the almost unknown wealth of domestic architecture of ancient date in which England stands alone."—*The Times*.

Large 8vo, cloth, gilt. £1 1s. net.

EARLY RENAISSANCE ARCHITECTURE IN ENGLAND.

An Historical and Descriptive Account of the Tudor, Elizabethan and Jacobean Periods, 1500—1625. By J. ALFRED GOTCH, F.S.A. With 87 Collotype and other Plates and 230 Illustrations in the Text, from Drawings by various accomplished Draughtsmen, and from photographs specially taken.

"A more delightful book for the architect it would be hard to find. It is quite a storehouse of references and illustrations, and should be quite indispensable to the architect's library."—*The British Architect*.

Large folio, cloth, gilt. £1 10s. net.

SOME ARCHITECTURAL WORKS OF INIGO JONES.

Illustrated by a Series of Measured Drawings of the Chief Buildings designed by him, together with Descriptive and Biographical Notes, and a complete List of his Authentic Works. By H. INIGO TRIGGS and HENRY TANNER, A.A.R.I.B.A. Containing 40 Plates and other Illustrations in the Text.

"The plates are quite perfect as specimens of draughtsmanship, and possess a crispness and freedom of handling which differentiate them from ordinary measured drawings."—*A. A. Notes*.
 "The authors have illustrated all that they have found good reason to regard as Jones's work, and their capably produced volume forms a worthy addition to the history of the Later Renaissance in England."—*The Building News*.

Thick demy 8vo, cloth, gilt. £1 1s. net.

- A HISTORY OF ARCHITECTURE for the Student, Craftsman, and Amateur. Being a Comparative View of all the Styles of Architecture from the earliest period. By Professor BANISTER FLETCHER, F.R.I.B.A., and BANISTER F. FLETCHER, F.R.I.B.A. Fifth Edition, revised and greatly enlarged. With about 2,000 Illustrations, reproduced from Photographs of Buildings of all Ages, and from specially prepared Drawings of Constructive and Ornamental Detail.

"*Par excellence* THE STUDENT'S MANUAL OF THE HISTORY OF ARCHITECTURE."—*The Architect*.

"A complete, trustworthy, and extremely attractive manual."—*The Builder*.

"Immeasurably superior to the original edition. . . ."—*The Architectural Review*.

Large 8vo, cloth, gilt. 12s. 6d. net.

- ARCHITECTURE, EAST AND WEST. A Collection of Essays written at various times during the last sixteen years. By R. PHENÉ SPIERS, F.S.A., F.R.I.B.A. Now first brought together and issued, with further illustrations, as part of a testimonial to the Author. With 40 full-page and other Illustrations, reproduced from the Author's drawings and from photographs.

"The essays on some phases of the Architecture of the past here gathered together have been arranged by Mr. Spiers, in answer to a request that he would allow them to be reprinted. It was felt that, scattered as they were, these valuable contributions to the history of the Building Art were not readily accessible, and did not take the place they should do amongst works of reference."—*W. R. L.*

Large 8vo, cloth. 7s. 6d. net.

- HOW TO JUDGE ARCHITECTURE. A Popular Guide to the Appreciation of Buildings. By RUSSELL STURGIS, M.A. With 84 full-page Illustrations, reproduced in half-tone, from photographs of some of the chief buildings of the world.

A study of this book will enable the reader to acquire such an independent knowledge of the essential characteristics of good buildings that he will always enjoy the sight, the memory, or the study of a noble structure without undue anxiety as to whether he is right or wrong in his appreciation.

Large 8vo, cloth. 7s. 6d. net.

- THE APPRECIATION OF SCULPTURE. A Popular Handbook for Students and Amateurs. By RUSSELL STURGIS, M.A. With 64 full-page Illustrations, reproduced in half-tone, from photographs of some of the most notable examples of the sculptor's art.

This volume treats of sculpture, both architectural and monumental, dwelling upon its history, the characteristics of the principal schools, and the criticism of standard works, an appreciation of which will enable the reader to understand this noble art.

B. T. BATSFORD,
PUBLISHER,
94, High Holborn, London.

2 vols., royal 4to, half bound. £2 2s. net. (*Published at* £5 5s.)
ANCIENT DOMESTIC ARCHITECTURE IN GREAT BRITAIN. By F. T. DOLLMAN, Architect. Containing 161 beautiful Lithographic Plates, illustrating by means of careful measured drawings and sketches the principal examples of Mediæval Domestic Architecture in England, with Analytical and Descriptive Text.

"Mr. Dollman's is the best illustrated and most generally useful book on the *civil* architecture of the Middle Ages. The buildings here drawn and described comprise not only dwelling-houses of varying degrees of importance—from the mansion of a lord-of-the-manor or merchant-prince to the cottage of a small tradesman in a country town—but also palaces, colleges, halls, schools, hospitals, and almshouses."—*Arthur S. Flower, M.A., F.S.A., A.R.I.B.A.*

2 vols., royal 4to, cloth, gilt. £2 2s. net. (*Published at* £5 5s.)
DETAILS OF GOTHIC ARCHITECTURE, measured and drawn from Existing Examples of the XIIth, XIIIth, XIVth, and XVth Centuries, by J. K. COLLING, Architect. Containing 190 Lithographed Plates, chiefly of measured drawings.

"Mr. Colling's beautiful and accurate records of a great architectural epoch and of the indigenous art of this country have an inherent value and interest which can never entirely disappear. The illustrations offer invaluable assistance towards understanding and comparing the various phases of Gothic design, from the general lines of composition down to the most minute details of construction and of ornamentation."—*Arthur S. Flower, Esq., M.A., F.S.A.*

Royal 4to, cloth, gilt. 15s. net. (*Published at* £2 2s.)
MEDIÆVAL FOLIAGE AND COLOURED DECORATION IN ENGLAND. By JAS. K. COLLING. A series of Examples taken from Buildings of the Twelfth to the Fifteenth Century. Containing 76 Lithographic Plates, representing 600 examples.

A book of exceptional and very nearly unique interest. Apart from Pugin's "*Gothic Ornaments*," it is the only collection that exists of well-drawn specimens of old English carved work, both in *stone and wood*, and *ranging over the whole of the Middle Ages*.

Large 4to, art canvas, gilt. £1 5s. net.
THE ART AND CRAFT OF GARDEN MAKING. By THOMAS H. MAWSON, Garden Architect. Second Edition, revised and much enlarged. Containing upwards of 200 Illustrations (50 of which are full-page) of perspective views, plans, and details of gardens, ranging in size from a tiny cottage garden to gardens of twelve acres in extent.

Folio, half morocco, gilt. £4 4s. net.
FORMAL GARDENS IN ENGLAND AND SCOTLAND. A Series of Views, Plans and Details of the finest Old Gardens still existing. With an Introduction and Descriptive Accounts. By H. INIGO TRIGGS, A.R.I.B.A. Containing 125 fine Plates, 72 from the Author's Drawings, and 53 from Photographs specially taken.

"That the book will make a charming addition to the libraries of artistic-minded people there can be no doubt whatever, and to the lover of gardens, from an architect's point of view particularly, we can hardly imagine a more welcome or elegant publication."—*The Building News*.

Crown 4to, handsomely bound in art canvas, gilt. Price 21s. each, net.

OLD ENGLISH COTTAGES AND FARM-HOUSES.

A Series of Volumes designed to illustrate the most typical and beautiful remains of minor Domestic Architecture in England. Each volume contains 100 Photographic Plates, artistically printed in Collotype, accompanied by Descriptive Notes and Sketches.

- (1) KENT AND SUSSEX. Photographed by W. GALSWORTHY DAVIE and described by E. GUY DAWBER. The rural buildings of Kent and Sussex are typical of native homely English work, and amongst them may be found nearly every style of architecture.

"Every cottage illustrated has interest through its picturesqueness, and the variety of them is remarkable."—*The Architect*.

"All lovers of our domestic architecture should buy this book."—*The Antiquary*.

- (2) SHROPSHIRE, HEREFORDSHIRE, AND CHESHIRE. Photographed by JAMES PARKINSON and described by E. A. OULD. This volume illustrates the half-timber buildings characteristic of these counties.

"No districts in Great Britain are more richly endowed with specimens of genuine half-timber work than these three beautifully wooded counties, so that Mr. Parkinson has had little difficulty in providing an attractive series of photographs in his well-produced and useful volume."—*The Building News*.

- (3) THE COTSWOLD DISTRICT, comprising parts of Gloucestershire, Oxfordshire, Northants, and Worcestershire. Photographed by W. GALSWORTHY DAVIE and described by E. GUY DAWBER. The buildings illustrated in this volume are essentially of a stone type, and present a special variety of architecture, very dissimilar to those illustrated in the two previous volumes.

"This charming volume contains one hundred photographs of the most beautiful domestic buildings in the country"—*The Daily News*.

Large 8vo, art canvas, gilt. 15s. net.

OLD ENGLISH DOORWAYS. A Series of Historical Examples from Tudor Times to the end of the XVIIIth Century. Illustrated on 70 Plates, reproduced in Collotype from Photographs specially taken by W. GALSWORTHY DAVIE. With Historical and Descriptive Notes on the subjects, including 34 Drawings and Sketches by HENRY TANNER, A.R.I.B.A., Author of "English Interior Woodwork."

"A most admirable addition to any library of architectural and artistic books. The subjects brought together in this volume comprise many of the best types of doorways to be seen in England."—*The Building News*.

B. T. BATSFORD,
PUBLISHER,
94, High Holborn, London.

Imperial 4to, cloth. 10s. 6d.

ORDERS OF ARCHITECTURE — GREEK, ROMAN, and ITALIAN. A Collection of Typical Examples from Normand's "Parallels" and other Authorities, with Notes on the Origin and Development of the Classic Orders, and descriptions of the plates, by R. PHENÉ SPIERS, F.S.A., Master of the Architectural School of the Royal Academy. Fourth Edition, revised and enlarged, containing 27 full-page Plates, seven of which have been specially prepared for the work.

"A most useful work for architectural students, clearly setting forth in comparative form the various orders. Mr. Spiers gives recognised examples of the principal forms of capital and base, and of the finer and bolder profiles of entablatures, with their decorative complements. A good feature of the plates is the scale below each in English feet. Mr. Spiers's notes are also very appropriate and useful."—*The British Architect*.

"An indispensable possession to all students of architecture."—*The Architect*.

Large folio, cloth. £1 10s. net.

EXAMPLES OF GREEK AND POMPEIAN DECORATIVE WORK. Measured and drawn by J. CROMAR WATT. Containing 60 Collotype Plates (17 ins. × 13 ins.), reproduced from the original Pencil Drawings of the Author, and comprising Architectural Details, Ornament in White Marble, Painted and Modelled Terra-cotta, Mosaic Pavement, and a variety of Ornamental Bronze Work.

"The best drawn and most charming book of illustration of classic ornament which has been published."—*The Builder*.

Small folio, cloth, gilt. £1 5s. net.

THE HISTORIC STYLES OF ORNAMENT. Containing 1,500 Examples of the Ornament of all Countries and Periods, exhibited in 100 Plates, mostly printed in Gold and Colours. With Historical and Descriptive Text (containing 136 Illustrations), translated from the German of H. DOLMETSCH.

A well-selected "Grammar of Ornament," which gives particular attention to the Art of the Renaissance.

Royal 8vo, cloth, gilt. 5s. net.

A MANUAL OF HISTORIC ORNAMENT. Treating upon the Evolution, Tradition, and Development of Architecture and other Applied Arts. Prepared for the use of Students and Craftsmen. By RICHARD GLAZIER, A.R.I.B.A., Headmaster of the Manchester School of Art. Containing 500 Illustrations.

"Not since the publication of Owen Jones' celebrated 'Grammar of Ornament' have we seen any book, brought out on popular lines, that could compare with Mr. Glazier's 'Manual.' In many ways it is the better book of the two. . . . It simply abounds with beautiful, delicately-drawn illustrations, and forms a perfect treasury of designs."—*The Bookseller*.

"It would be difficult, if not wellnigh impossible, to find a more useful and comprehensive book than this, which contains examples of all the leading groups of ornamental design, and many more minor ones, but invariably interesting and valuable."—*The Athenaeum*.

Thick demy 8vo, cloth, gilt. 12s. 6d.

- A HANDBOOK OF ORNAMENT. With 3,000 Illustrations of the Elements and the Application of Decoration to Objects. By F. S. MEYER, Professor at the School of Applied Art, Karlsruhe. 3rd English Edition, revised by HUGH STANNUS, F.R.I.B.A.

"A LIBRARY, A MUSEUM, AN ENCYCLOPÆDIA, AND AN ART SCHOOL IN ONE. TO RIVAL IT AS A BOOK OF REFERENCE ONE MUST FILL A BOOKCASE."—*The Studio*.

In stout wrapper-envelope. 2s. 6d. net.

- AN ALPHABET OF ROMAN CAPITALS, together with three sets of lower-case letters, selected and enlarged from the finest examples and periods. By G. WOOLLISCROFT RHEAD, R.E., Hon. A.R.C.A., Lond. Each letter 7 ins. square, with descriptive text.

Professor W. R. Lethaby writes :—"I am very glad that your specimen Alphabets have been published. Some definitive examples to which one could point have been badly wanted. I hope every Art School in the country will soon be provided with a copy, and in that case I do not doubt we shall shortly see a much-needed improvement in this simple matter of lettering."

Crown 8vo, cloth. 3s. 6d. net.

- ALPHABETS, OLD AND NEW. Containing 150 complete Alphabets, 30 Series of Numerals, Numerous Facsimiles of Ancient Dates, &c. Selected and arranged by LEWIS F. DAY. Preceded by a short account of the Development of the Alphabet. Second Edition, revised and Enlarged, with many further Examples. The most handy, useful, and comprehensive work on the subject.

The subjects new to this Edition include Modern Alphabets, designed by R. Anning Bell, Selwyn Image, A. M. Mucha, M. P. Verneuil, E. Grasset, J. Walter West, and others. The work also includes a series of Old and New Lettering specially selected or photographed, as showing characteristic design in different materials.

"Everyone who employs practical lettering will be grateful for 'Alphabets, Old and New.' Mr. Day has written a scholarly and pithy introduction, and contributes some beautiful alphabets of his own design."—*The Art Journal*.

Crown 8vo, cloth. 5s. net.

- LETTERING IN ORNAMENT. An Enquiry into the Decorative Use of Lettering, Past, Present, and Possible. By LEWIS F. DAY. With 200 Illustrations from Photographs and Drawings.

"The book itself is an admirable one, and the author's clearness of thought and expression makes it most readable and instructive. . . . The illustrations range over a wide field and are invaluable, as they show at once what has been done by the artists of many nations."—*The Builder's Journal*.

Crown 8vo, cloth. 5s. net.

- ART IN NEEDLEWORK: A BOOK ABOUT EMBROIDERY. By LEWIS F. DAY and MARY BUCKLE. Second Edition, revised, containing 80 full-page Plates, reproduced from photographs, and 45 Illustrations in the text.

An invaluable Review of the Art and Practice of Embroidery.

B. T. BATSFORD,
PUBLISHER,
94, High Holborn, London.

Demy 8vo, art linen, gilt. 6s. net.

THE PRINCIPLES OF DESIGN. A Textbook especially designed to meet the requirements of the Board of Education Examination Syllabus on "Principles of Ornament." By G. WOOLLISCROFT RHEAD, Hon.A.R.C.A. With 16 photographic plates and over 400 other Illustrations, chiefly line drawings by the Author.

MR. LEWIS F. DAY'S HANDBOOKS OF ORNAMENTAL DESIGN.

Demy 8vo, cloth, gilt. 7s. 6d. net.

PATTERN DESIGN. A Book for Students, treating in a practical way of the Anatomy, Planning, and Evolution of Repeated Ornament. Containing 300 pages of text, with upwards of 300 Illustrations, reproduced from drawings and from photographs.

"Every line and every illustration in this book should be studied carefully and continually by everyone having any aspiration toward designing."—*The Decorator*.

Demy 8vo, cloth, gilt. 8s. 6d. net.

ORNAMENT AND ITS APPLICATION. A sequel to "Pattern Design," and an Introduction to the Study of Design in relation to Material, Tools, and ways of Workmanship. Containing 320 pages, with 300 Illustrations of Decorative Objects and Ornament, reproduced from Photographs and Drawings.

Mr. Walter Crane, writing in the "Manchester Guardian," says: ". . . The work can be confidently commended as a most workmanlike and accomplished treatise not only to all students of design, but to artists and craftsmen generally. The illustrations are extremely rich and varied."

Thick crown 8vo, cloth, gilt. 12s. 6d.

NATURE IN ORNAMENT. An Enquiry into the Natural Element in Ornamental Design, and a Survey of the Ornamental Treatment of Natural Forms. With 450 Illustrations. 3rd Edition, revised and enlarged.

Crown 8vo, art linen. 3s. 6d.

SOME PRINCIPLES OF EVERY-DAY ART. Second Edition, revised, with numerous Illustrations.

"If anybody wants a sensible book on Art as applied to everyday ornament, let him buy Mr. Day's nicely-printed little volume. Easy to follow, well arranged and extremely concise. . . . Mr. Day knows what to say and how to say it."—*Athenaeum*.

In ornamental paper wrapper. 1s. net.

MOOT POINTS. Friendly Disputes on Art and Industry between LEWIS F. DAY and WALTER CRANE. With amusing Caricatures by WALTER CRANE.

Medium 8vo, cloth, gilt. £1 1s. net.

WINDOWS: A BOOK ABOUT STAINED AND PAINTED GLASS. By LEWIS F. DAY. Second Edition, revised, containing 50 full-page Plates, and upwards of 200 other Illustrations.

"Contains a more complete account—technical and historical—of stained and painted glass than has previously appeared in this country."—*The Times*.

Large 8vo, cloth. 5s. net.

A HANDBOOK OF PLANT FORM FOR STUDENTS OF DESIGN. By ERNEST E. CLARK, Art Master, Derby Technical College. Containing 100 plates (size $10\frac{1}{2}$ ins. by $7\frac{1}{2}$ ins.), illustrating 61 varieties of Plants, comprising 800 illustrations. With an Introductory Chapter on the Elementary Principles of Design, Notes on the Plants, and a Glossary of Botanical Terms.

"Such a book has long been needed, and the appearance of this handsome volume at such a moderate price will be hailed with satisfaction by students of design everywhere."—*Arts and Crafts*.

"*A twentieth-century Herbal.*"—*The Art Journal*.

STUDIES IN PLANT FORM FOR THE USE OF STUDENTS, DESIGNERS, AND CRAFTSMEN. By G. WOOLLISCROFT RHEAD, R.E., Hon. A.R.C.A. Containing 25 photo-lithographic plates, reproduced in black-and-white from the author's drawings, illustrating upwards of sixty varieties of Plants, together with over eighty illustrations of Detail. Folio (size $17\frac{1}{2}$ ins. by 13 ins.) in cloth portfolio, 20s. net.

Mr. Walter Crane, writing to the author, says:—"I think your 'Studies in Plant Form' are well selected, and powerfully drawn, and give the characteristics of growth and structure very definitely, in a way likely to be useful to students and designers."

"Drawings more trustworthy have not been published in our day, nor yet studies upon which designers could so surely rely for information."—*The Art Journal*.

Imperial 4to, handsomely bound in cloth gilt. £1 5s. net.

DECORATIVE FLOWER STUDIES for the use of Artists, Designers, Students and others. A series of 40 Coloured Plates, printed by hand by a stencil process in facsimile of the original drawings, accompanied by 350 Studies of Detail showing the Development of the Plant in successive stages. With Descriptive Notes. By J. FOORD.

"A truly valuable and beautiful book. . . . The coloured plates are nearly all good they have a certain spaciousness of treatment that is full of delicacy and freedom; and we have no doubt at all that the book, considered as a whole, is a real gain to all who take delight in the decorative representation of flowers."—*The Studio*.

"The author is duly regardful of the designer's wants, and supplements the coloured page by outline drawings of details likely to be of use to him."—*The Art Journal*.

Crown 8vo, cloth. 3s. 6d. net.

DECORATIVE BRUSHWORK AND ELEMENTARY DESIGN. A Manual for the Use of Teachers and Students. By HENRY CADNESS, Second Master of the Municipal School of Art, Manchester. Second Edition, revised and enlarged, with upwards of 450 Examples of Design.

SYNOPSIS OF CHAPTERS:—Materials.—Preparatory Work.—Methods of Expression.—Elementary Forms of Ornament.—Natural Forms.—Influences in Styles.—Application of Study.

"In fact, the very grammar and technique of design is cemented within the compass of this volume, which is likely to prove a powerful aid to those who propose to devote themselves to designing, an occupation in which there is a wide and ample field."—*The Queen*.

B. T. BATSFORD,
PUBLISHER,
94, High Holborn, London.

Folio, buckram, gilt. £5 5s. net.

OLD SILVERWORK, CHIEFLY ENGLISH, FROM THE XVth TO THE XVIIIth CENTURIES. A series of choice examples selected from the unique loan collection exhibited at St. James's Court, London, in aid of the funds of the Children's Hospital, supplemented by some further fine specimens from the collections of the Dukes of Devonshire and Rutland. Edited, with Historical and Descriptive Notes, by J. STARKIE GARDNER, F.S.A. Containing 121 beautiful collotype plates reproduced in the most effective manner.

The edition of this work is limited to 500 copies, of which upwards of 400 are already disposed of.

Folio, cloth, gilt. £1 16s. net.

ENGLISH INTERIOR WOODWORK of the XVI., XVII., and XVIII. Centuries. A series of 50 Plates of Drawings to scale and Sketches, chiefly of domestic work, illustrating a fine series of examples of Chimney Pieces, Panelling, Sides of Rooms, Staircases, Doors, Screens, &c., &c., with full practical details and descriptive text. By HENRY TANNER, A.R.I.B.A., Joint Author of "Some Architectural Works of Inigo Jones."

Large 8vo, cloth, gilt. 12s. 6d. net.

THE DECORATION OF HOUSES. A Study of House Decoration during the Renaissance Period, with suggestions for the decorative treatment, furnishing, and arrangement of modern houses. By EDITH WHARTON and OGDEN CODMAN, Architect. With 56 full-page Photographic Plates of views of Rooms, Doors, Ceilings, Fireplaces, various pieces of Furniture, &c.

"The book is one which should be in the library of every man and woman of means, for its advice is characterised by so much common sense as well as by the best of taste."—*The Queen*.

Large folio, handsomely bound in old style. £1 10s. net.

THE DECORATIVE WORK OF ROBERT AND JAMES ADAM. Being a Reproduction of all the Plates illustrating DECORATION and FURNITURE from their "WORKS IN ARCHITECTURE," published 1778—1812. Containing 30 large folio Plates (size, 19 inches by 14 inches) giving about 100 examples of Rooms, Ceilings, Chimney-pieces, Tables, Chairs, Vases, Lamps, Mirrors, Pier-glasses, Clocks, &c., &c., by these famous Eighteenth-century Designers.

This volume contains every plate of decorative value from the complete work, which now fetches £70, and therefore forms a complete key to the graceful style for which the Brothers Adam are so universally renowned.

Medium 8vo, cloth, gilt. 15s. net.

OLD CLOCKS AND WATCHES AND THEIR MAKERS.

Being an Historical and Descriptive Account of the different Styles of Clocks and Watches of the Past in England and Abroad, to which is added a List of 10,000 Makers. By F. J. BRITTEN. Second edition, much enlarged, with 700 illustrations, mostly reproduced from photographs. 740 pages.

"It is a book which may be augmented in the future, but will scarcely be replaced, and which holds, in its way, a unique position in literature. . . . To the collector and amateur it is indispensable."—*Notes and Queries*.

Small folio, cloth, gilt, old style. £2 10s. net.

HEPPLEWHITE'S CABINET-MAKER AND UPHOLSTERER'S GUIDE; or, Repository of Designs for every article of Household Furniture in the newest and most approved taste. A complete facsimile reproduction of this rare work (published in 1794), containing nearly 300 charming Designs on 128 Plates.

Original copies when met with fetch from £17 to £18

"Hepplewhite's designs are characterised by admirable taste and perfect workmanship. . . . They are kept clear of the pitfalls which proved so fatal to the reputation of Chippendale, and not a few of them attain to a standard of refinement beyond which it seems hardly possible to go."—*The Cabinet Maker*.

Folio, half-cloth, £3 15s. net, or bound in half-calf, £4 4s. net.

CHIPPENDALE'S THE GENTLEMAN AND CABINET MAKER'S DIRECTOR. A complete facsimile of the 3rd and best Edition of this rare and much esteemed work. Containing 200 Plates of Designs of Chairs, Sofas, Beds and Couches, Tables, Library Book-cases, Clock-cases, Stove Grates, Fire Screens, Pier Glasses, &c.

The third edition of Chippendale's work, originally published in 1762, contains forty more plates than either of the two previous editions.

Demy 4to, art linen, gilt. £1 5s. net.

COLONIAL FURNITURE IN AMERICA. By LUKE VINCENT LOCKWOOD. An Historical and Descriptive Handbook of the Old English and Dutch Furniture, chiefly of the 17th and 18th Centuries, introduced into America by the Colonists. With 300 Illustrations of Chests, Couches, Sofas, Tables, Chairs, Settees, Cupboards, Sideboards, Mirrors, Chests of Drawers, Bedsteads, Desks, &c.

An authoritative and richly illustrated hand-book, forming a trustworthy guide to the determination of style, date, and authenticity of specimens of furniture of this period.

B. T. BATSFORD,
PUBLISHER,
94, High Holborn, London

Imperial 4to, in cloth portfolio, gilt. £1 8s.

DETAILS OF GOTHIC WOOD CARVING. Being a series of Drawings from original work of the XIVth and XVth Centuries. By FRANKLYN A. CRALLAN. Containing 34 Photo-lithographic Plates, two of which are double, illustrating some of the finest specimens of Gothic Wood Carving extant. With sections where necessary, and descriptive text.

"This admirable work is one of great interest and value. . . . Every variety of Gothic detail is here illustrated. Hitherto no full-sized details have been published, so that the present work will be invaluable to the wood carver, as the drawings possess all the strength and vigour of the original work."

FRENCH WOOD CARVINGS FROM THE NATIONAL MUSEUMS. A series of Examples printed in Collotype from Photographs specially taken from the Carvings direct. Edited by ELEANOR ROWE. Part I., Late 15th and Early 16th Century Examples; Part II., 16th Century Work; Part III., 17th and 18th Centuries. The 3 Series complete, each containing 18 large folio plates, with Descriptive Letterpress, folio, in portfolios, price 12s. each net; or handsomely half-bound in one volume, £2 5s. net.

This invaluable collection . . . should be possessed by every carver, both professional and amateur. . . . The plates are on so large a scale, and are so clearly produced, that they become equivalent, for the purposes of study, to the original works."—*The Architect*.

Demy 4to, half-bound. 10s. 6d.

ECCLESIASTICAL WOODWORK. A Series of Examples of Stalls, Screens, Book-Boards, Roofs, Pulpits, &c., illustrated on 21 beautifully engraved Copper Plates, from drawings by T. TALBOT BURY, Architect.

Folio, cloth, gilt. £2 2s. net.

OLD OAK ENGLISH FURNITURE. A Series of Measured Drawings, with some examples of Architectural Woodwork, Plasterwork, Metalwork, Glazing, &c. By J. W. HURRELL, Architect. Containing 110 full-page Plates reproduced by photo-lithography.

For ingenuity and quaintness of design, richness of moulding, and profusion of ornament, the old oak furniture of England is probably unsurpassed by the contemporaneous work of any other country.

Crown 8vo, paper covers. 1s.

HINTS ON WOOD CARVING FOR BEGINNERS. By ELEANOR ROWE. Fourth Edition, revised and enlarged, with numerous illustrations.

"The most useful and practical small book on wood carving we know of."—*The Builder*.
 "Full of sound directions and good suggestions."—*The Magazine of Art*.

Crown 8vo, paper covers. 1s.

HINTS ON CHIP CARVING. (Class Teaching and other Northern Styles.) By ELEANOR ROWE. With 40 Illustrations.

'A capital manual of instruction in a craft that ought to be most popular.'

Saturday Review.

Crown 8vo, paper covers. 1s. net.

THE ART OF BRASS REPOUSSÉ. A Manual of Practical Instruction for the Use of Amateurs. By GAWTHORP, Art Metal Worker to His Majesty. With a Prefatory Note by the Rt. Hon. the Countess AMHERST. Third edition, revised and enlarged, with 43 illustrations.

Imperial folio, buckram, gilt. £3 3s. net.

ENGLISH AND SCOTTISH WROUGHT IRONWORK. A Series of Examples of English Ironwork of the best period, with which is included most that now exists in Scotland. By BAILEY SCOTT MURPHY, Architect. Containing 80 fine Plates (size 21½ ins. by 14½ ins.), 68 reproduced from measured drawings, and 12 from photographs specially taken. With Descriptive Text.

"This volume stands alone as a unique collection of the best work in wrought iron done in Great Britain. It is replete with exact delineations and precise dimensions technically and thoroughly realised for the student and practical craftsman."—*The Building News*.

Demy 8vo, cloth. 6s.

A HANDBOOK OF ART SMITHING. By F. S. MEYER, Author of "A Handbook of Ornament." With an Introduction by J. STARKIE GARDNER. Containing 214 Illustrations.

"A most excellent manual, crowded with examples of ancient work. The Introduction is by Mr. Starkie Gardner, and students know what that name implies."—*The Studio*.

Large 8vo, art linen. 7s. 6d. net.

THE APPRECIATION OF PICTURES. An Historical and Critical Handbook of Ancient and Modern Art for the Artist, Student, and Connoisseur. By RUSSELL STURGIS, M.A. With 73 full-page Photographs after Famous Pictures.

"This book is so well founded in the study of the masters, old and new; so faithful to the true idea of the graphic arts, and so well written, that it could be read with interest and sympathy by anybody who loves paint."—*The Scotsman*.

Large 8vo, art linen. 7s. 6d. net.

PICTORIAL COMPOSITION AND THE CRITICAL JUDGMENT OF PICTURES. A Handbook for Students and lovers of Art. By H. R. POORE. With about 150 Illustrations, chiefly reproduced from photographs, of celebrated pictures, including numerous elucidatory diagrams.

One of the best works of its kind. Of particular value to the artist, to the art student, and to all interested in understanding the merits of a picture. The book is, in fact, a liberal education in art.

B. T. BATSFORD,
PUBLISHER,

94, High Holborn, London.

Large Imperial 8vo, cloth. 7s. 6d. net.

ARCHITECTURAL SKETCHING AND DRAWING IN PERSPECTIVE. A Progressive Series of 36 Plates, illustrating the Drawing of Architectural Details, and Sketching to Scale; with Chapters on Various Perspective Methods, Figures, Foliage, &c. Based to some extent on R.'s Method of Perspective. By H. W. ROBERTS, Author of "R.'s Method." [*In the Press.*]

Demy 8vo, cloth. 2s. 6d. net.

THE PRINCIPLES OF ARCHITECTURAL PERSPECTIVE. Prepared for the Use of Students, &c., with chapters on Isometric Drawing and the Preparation of Finished Perspectives. By G. A. T. MIDDLETON, A.R.I.B.A. Illustrated with 51 Diagrams and 8 finished Drawings by various Architects.

Demy 4to, cloth, gilt. 8s. 6d. net.

ARCHITECTURAL DRAWING. A Text-book with special reference to artistic design. By R. PHÉNÉ SPIERS, F.S.A., Author of "The Orders of Architecture," &c. New edition, with 28 full-page and folding Plates.

Crown 8vo, art linen. 5s. 6d. net.

PEN DRAWING. AN ILLUSTRATED TREATISE. By CHARLES D. MAGINNIS, Instructor in Pen Drawing, Boston Architectural Club. With a special chapter on Architectural Drawing. Illustrated by 72 Reproductions of the Work of the principal Black-and-White Artists, Practical Diagrams, &c.

Large Imperial 8vo, cloth, gilt. 10s. net.

THE PRINCIPLES OF ARCHITECTURAL COMPOSITION. An attempt to Order and Phrase Ideas which have hitherto been only felt by the Instinctive Taste of Designers. By J. B. ROBINSON, Architect. With 300 Illustrations of Ancient and Modern Buildings in elucidation of the points dealt with.

Large 8vo, cloth, gilt. 8s. 6d. net.

THE PRINCIPLES OF PLANNING. By PERCY L. MARKS, Architect. With Notes on the Essential Features and Requirements of Different Classes of Buildings. Illustrated by 150 Plans, mainly of important modern Buildings. Second Edition, revised and greatly enlarged.

"It will be found a suggestive and useful book on the subject."—*The British Architect.*

Square 8vo, cloth, gilt. 6s. net.

FARM BUILDINGS: THEIR CONSTRUCTION AND ARRANGEMENT. By A. DUDLEY CLARKE, F.S.I. 3rd Edition, revised and much enlarged. With chapters on Cottages, Homesteads, Roofs, Sanitary Matters, &c. Containing 52 Plates, and many other Illustrations.

Adopted as the text-book by the Surveyors' Institution.
Mr. Clarke's handbook is the best of its kind."—*The Surveyor.*

3 vols., large folio, strongly bound in buckram, gilt. £15 15s. net.

MODERN OPERA-HOUSES AND THEATRES. Examples of Playhouses recently erected in Europe. With Descriptive Accounts, a Treatise on Theatre Planning and Construction, and Supplements on Stage Machinery, Theatre Fires, and Protective Legislation. By EDWIN O. SACHS, Architect. Complete in Three Grand Folio Volumes, containing over 200 large Folio Plates, reproduced in the best manner by Photo-lithography, and some 600 Diagrams, interspersed in the 350 pages of Text.

"Mr. Sachs has given us a work which most usefully and adequately fills a gap in architectural literature."—*The British Architect*.

"The undertaking surpasses anything of the kind ever attempted in this country."—*The Building News*.

Crown 4to, cloth, gilt. 5s. net.

THE ST. LOUIS EXHIBITION, 1904. An Illustrated Account of the Exhibition and its Buildings. By H. PHILLIPS FLETCHER, F.R.I.B.A. Containing 43 full-page and smaller Illustrations of plans, sections, elevations, and details of construction of the various buildings.

Square 8vo, cloth, gilt. 7s. 6d.

STABLE BUILDING AND STABLE FITTING. A Treatise on the Planning, Arrangement, Construction, and Drainage of Stables. By BVNG GIRAUD, Architect. With 56 Plates and numerous Illustrations.

2 vols., crown 8vo, cloth, gilt. 7s. 6d.

CONCRETE: ITS USE IN BUILDING. By THOS. POTTER. Second Edition, greatly enlarged, containing 500 pages of Text, and 100 Illustrations.

This work deals with walls, paving, roofs, floors, and other details of Concrete Construction, and fully describes the various methods for rendering buildings fire-proof.

2 vols., large 8vo, cloth, gilt. £1 5s. net.

FACTS ON FIRE PREVENTION. An enquiry into the Fire-Resisting Qualities of various Materials and Systems of Construction, conducted by the British Fire Prevention Committee. Edited by EDWIN O. SACHS, Architect, Author of "Modern Theatres." Containing Accounts of Tests of Floors, Ceilings, Partitions, Doors, Curtains, &c., with 100 full-page Plates, and many other Illustrations from Photographs and Drawings; also Plans of the Testing Chambers, Diagrams of Temperature, &c.

An important contribution to the science of fire-protective construction.

B. T. BATSFORD,
PUBLISHER,
94, High Holborn, London.

Large Imperial 8vo, cloth, gilt. £1 5s. net.

MODERN SCHOOL BUILDINGS, ELEMENTARY AND SECONDARY.

A Treatise on the Planning, Arrangement, and Fitting of Day and Boarding Schools. With special chapters on the Treatment of Class-rooms, Lighting, Warming, Ventilation, and Sanitation. By FELIX CLAY, B.A., Architect. Second Edition, thoroughly revised and much enlarged, consisting of 560 pp., with 450 illustrations of plans, perspective views, constructive details, and fittings.

"Mr. Clay has produced a work of real and lasting value. It reflects great credit on his industry, ability, and judgment."—*The Builder*.

"It gives the practising architect as well as the student that complete and full information upon most subjects connected with the planning and erecting of schools that he really needs. . . . The volume is likely to be the standard work upon the subject for many a year to come."—*London Architectural Association Notes*.

"An invaluable work of reference. Every type of secondary and elementary school is fully illustrated and adequately described."—*The School World*.

Imperial 8vo, cloth, gilt, 21s. net.

RESIDENTIAL FLATS OF ALL CLASSES, INCLUDING ARTISANS' DWELLINGS. A Practical Treatise on their Planning and Arrangement, together with chapters on their History, Financial Matters, &c. By SYDNEY PERKS, F.R.I.B.A., P.A.S.I. Containing 300 pages, with 226 Illustrations, including plans and views of important Examples by leading architects in England, the Continent, and America.

"The great monograph of the year (1905) was Mr. Perks' book on the planning of flats—a standard work of considerable importance."—*The Building News*.

"Altogether it is a book which is not only unique in architectural literature, but is one in which every page has a practical tendency. It can therefore be a source of profit to architects and to builders, as well as to speculators."—*The Architect*.

"Each chapter is replete with accurate and careful information, and the several chapters successfully cover the whole subject. For the tenant, the owner, the builder, the book has a very special interest and value, and, since flat-life has evidently come to stay, Mr. Perks has done well to provide us with so complete, careful, and authoritative an account of its many sides."—*The Standard*.

Demy 8vo, cloth, gilt. 7s. 6d. net.

THE PLANNING AND FITTING-UP OF CHEMICAL AND PHYSICAL LABORATORIES. With Notes on the Ventilation, Warming, and Lighting of Schools. By T. H. RUSSELL, M.A. Illustrated by 36 Plans of Laboratories, Working Drawings, Sketches, and Diagrams of Fittings and other Details.

Imperial 4to, cloth, gilt. £1 1s. net.

A BOOK OF COUNTRY HOUSES. Containing 62 Plates reproduced from Photographs and Drawings of Perspective Views and Plans of a variety of executed examples, ranging in size from a moderate-sized Suburban House to a fairly large Mansion. By ERNEST NEWTON, Architect.

The houses illustrated in this volume have been planned during the last ten years, and may be taken as representative of the English Country House of the present day. They offer much variety in their size, their sites, the character of the materials in which they are constructed, and their types of plan.

Large 8vo, art linen, gilt. Price 8s. 6d. net.

THE MODEL VILLAGE AND ITS COTTAGES: BOURNVILLE. Illustrated by Fifty-seven Photographic and Line Plates of Plans, Views, and Details. By W. ALEXANDER HARVEY, Architect. With Notes on Economic Cottage Building, Garden Design, and various features.

Demy 4to, cloth, gilt. 10s. 6d. net.

HOMES FOR THE COUNTRY. A Collection of Designs and Examples of recently executed works. By R. A. BRIGGS, Architect, F.R.I.B.A., Soane Medallist. Containing 48 full-page Plates of Exterior and Interior Views and Plans. With descriptive notes.

"Every example given is an illustration of very considerable skill. The plans are all excellent—well devised on economical yet convenient lines, well lit, comfortable, and with every little point thought out; while the elevations are pleasing without being extravagant. Such a book is admirable in its suggestiveness, and useful to all."—*The Architect's Magazine*.

Demy 4to, cloth, gilt. 12s. 6d.

BUNGALOWS AND COUNTRY RESIDENCES. A Series of Designs and Examples of executed Works. By R. A. BRIGGS, F.R.I.B.A. 5th and enlarged Edition, containing 47 Photolithographic Plates, many of which are new to this edition. With descriptions, including the actual cost of those which have been built, and the estimated cost of those not yet erected.

"Economy, convenience, and comfort in small country houses are important elements, and these have been studied with an artistic appreciation of effect and rural charm in Mr. Briggs' designs."—*The Building News*.

"Those who desire grace and originality in their suburban dwellings might take many a valuable hint from this book."—*The Times*.

Royal 4to, cloth, gilt. 10s. 6d. net.

MODERN COTTAGE ARCHITECTURE, illustrated from Works of well-known Architects. Edited, with an Essay on Cottage Building, and descriptive notes on the subjects, by MAURICE B. ADAMS, F.R.I.B.A. Containing 50 plates of Perspective Views and Plans of the best types of country cottages.

"The cottages which Mr. Adams has selected would do credit to any estate in England."—*The Architect*.

"An interesting record of some excellent cottage architecture of a good class."—*The Builder*.

Imperial 4to, cloth, gilt. £1 1s. net.

HOUSES FOR THE WORKING CLASSES. Comprising 52 Typical and Improved Plans, with Elevations, Details, &c., and Descriptive Text, including Notes on the Treatment and Planning of Small Houses. By S. W. CRANFIELD and H. I. POTTER, A.A.R.I.B.A. Second Edition, thoroughly revised, with many additional Plans.

This book deals with Cottages suitable for the Working Classes in Suburban and Rural Districts. The majority of the examples illustrated consist of two and three-storey dwellings, adapted to be built in pairs, groups, or terraces, and vary in cost from £160 to £650.

"The book meets a distinct want. The subject is not written round, but thoroughly threshed out."—*The Surveyor*.

B. T. BATSFORD,
PUBLISHER,
94, High Holborn, London.

Royal 4to, cloth, gilt. 7s. 6d. net.

MODERN HOUSING IN TOWN AND COUNTRY. Illustrated by examples of municipal and other schemes of Block Dwellings, Tenement Houses, Model Cottages and Villages, and the Garden City, together with Illustrations of the Cheap Cottages Exhibition. By JAMES CORNES. With many Plans and Views from Drawings and Photographs. Full Descriptive Text and particulars of Cost, &c.

" . . . The illustrations constitute the principal feature of the work. . . . Mr. Cornes has compiled a book which cannot fail to prove useful, not only to the members of public bodies, but also to property-owners, architects, and builders, and the publisher has presented the work in an attractive form."—*The Builder*.

Large Imperial 8vo, cloth. 12s. 6d. net.

MODERN PRACTICAL JOINERY. A Treatise on the Practice of Joiner's Work by Hand and Machine. Containing a full Description of Hand-tools and their Uses, Workshop Practice, Fittings and Appliances, the Preparation of all kinds of House Joinery, Bank, Office, Church, Museum and Shop-fittings, Airtight Cases, and Shaped Work. With concise Treatises on Stair-building and Hand-railing, and a Glossary of Terms. By GEORGE ELLIS. 380 pages, with 1,000 practical Illustrations.

"In this excellent work the mature fruits of the first-hand practical experience of an exceptionally skilful and intelligent craftsman are given. It is a credit to the author's talent and industry, and is likely to remain an enduring monument to British craftsmanship. As a standard work it will doubtless be adopted and esteemed by the architect, builder, and the aspiring workman."—*The Building World*.

Large 8vo, cloth, gilt. 5s. net.

SCAFFOLDING: A Treatise on the Design and Erection of Scaffolds, Gantries, and Stagings, with an Account of the Appliances used in connection therewith, and a Chapter on the Legal Aspect of the Question. By A. G. H. THATCHER, Surveyor. With 146 Diagrams and 6 full-page plates.

"A really valuable little treatise."—*The Builder*.

"The author has had a wide and varied experience of the subject, and his book is clearly written, and essentially practical."—*The Builder's Journal*.

Crown 8vo, cloth, gilt. 3s.

DANGEROUS STRUCTURES AND HOW TO DEAL WITH THEM. A Handbook for Practical Men. By GEORGE H. BLAGROVE, Author of "Shoring, and its Application," &c.

Demy 4to, cloth. 18s. net.

PLASTERING—PLAIN AND DECORATIVE. A Practical Treatise on the Art and Craft of Plastering and Modelling. Including full descriptions of the various Tools, Materials, Processes, and Appliances employed, and important chapters on Concrete Work, both plain and re-inforced. By WILLIAM MILLAR. With an Introduction by G. T. ROBINSON, F.S.A., treating of the History of Art, illustrated by numerous fine examples. Containing 600 pages of text, with 53 full-page Plates and 500 smaller Illustrations. Third Edition, revised and Enlarged.

Large crown 8vo, cloth, gilt. 10s. net.

BUILDING MATERIALS: THEIR NATURE, PROPERTIES, AND MANUFACTURE. A Text-book for Students. By G. A. T. MIDDLETON, Architect, A.R.I.B.A., Author of "Stresses and Thrusts," "Drainage," &c. Containing 450 pages of Text, with 200 Illustrations from specially prepared drawings, and 12 full-page Photographic Plates.

This work contains a *résumé* of the latest and most reliable information on the subject, presented in a clear and concise way.

Crown 8vo, cloth, gilt. 3s.

BUILDING CONSTRUCTION AND DRAWING. A TEXT-BOOK ON THE PRINCIPLES AND PRACTICE OF CONSTRUCTION. By CHARLES F. MITCHELL, Lecturer on Building Construction at the Polytechnic Institute, London. FIRST STAGE OR ELEMENTARY COURSE. 6th Edition (40th Thousand), revised and greatly enlarged. Containing 400 pages of Text, with 1,000 Illustrations, fully dimensioned.

"The book is a model of clearness and compression, well written and admirably illustrated, and ought to be in the hands of every student of building construction."—*The Builder*.

Crown 8vo, cloth, gilt. 5s. 6d.

BUILDING CONSTRUCTION. A TEXT-BOOK ON THE PRINCIPLES AND PRACTICE OF CONSTRUCTION. (ADVANCED AND HONOURS COURSES.) By CHARLES F. MITCHELL. For the use of Students preparing for the Examinations of the Science and Art Department, the Royal Institute of British Architects, the Surveyors' Institution, the City Guilds, &c., and for those engaged in building. Containing 620 pages of Text, with over 600 Illustrations, fully dimensioned. 4th Edition (19th Thousand), thoroughly revised and much enlarged.

"Mr. Mitchell's two books form unquestionably the best guide which any student can obtain at the present moment. In fact, so far as it is possible for anyone to compile a satisfactory treatise on building construction, Mr. Mitchell has performed the task as well as it can be performed."—*The Builder*.

Crown 8vo, cloth, gilt. 5s.

BRICKWORK AND MASONRY. A Practical Text-book for Students and those engaged in the Design and Execution of Structures in Brick and Stone. By CHARLES F. MITCHELL, assisted by GEORGE A. MITCHELL. Being a thoroughly revised and remodelled edition of the chapters on these subjects from the authors' "Elementary" and "Advanced Building Construction," with special additional chapters and new illustrations. 400 pp., with about 600 illustrations (fully dimensioned), including numerous full and double-page plates.

"Regarded in its entirety, this is a most valuable work. It is not a treatise, as the term is generally understood, but a compendium of useful information admirably collated and well illustrated, and as such has a distinct sphere of usefulness."—*The Builder*.

B. T. BATSFORD,
PUBLISHER,
94, High Holborn, London.

Large thick 8vo, cloth, gilt. 18s. net.

BUILDING SPECIFICATIONS for the use of Architects, Surveyors, Builders, &c. Comprising the complete Specification of a large House, with Stables, Conservatory, &c.; also numerous Clauses relating to Special Classes of Buildings, and Practical Notes on all Trades and Sections. By JOHN LEANING, F.S.I., Author of "Quantity Surveying," &c. Containing 630 pages of Text, with 140 Illustrations. The most comprehensive, systematic, and practical treatise on the subject.

"A very valuable book on this subject, and one which must become a standard work in relation thereto. . . . Mr. Leaning has thoroughly mastered his subject in all its intricacy of detail, and in dealing with it is clear, concise, and definite."—*The Architect*.

Large 8vo, cloth, gilt. 4s. 6d.

TREATISE ON SHORING AND UNDERPINNING, and generally dealing with dangerous Structures. By C. H. STOCK. Third Edition, revised and enlarged by F. R. FARROW, F.R.I.B.A. With 40 clear and practical Illustrations.

"Mr. Stock has supplied a manifest want in the literature of practical architecture and surveying, and there is no doubt his book will be of great practical use."—*The Builder*.

Crown 8vo, cloth, gilt. 4s. 6d. net.

STRESSES AND THRUSTS. A Text-book on their Determination in Constructional Work, with Examples of the Design of Girders and Roofs, for the use of Students. By G. A. T. MIDDLETON, A.R.I.B.A. Third Edition, thoroughly revised and much enlarged. With 170 illustrative Diagrams and Folding Plates.

"The student of building construction will find in this book all he ought to know as to the relation of stresses and thrusts to the work he may be engaged in. Foundations, chimneys, walls, roofs, steel joists, girders, stanchions, are all taken in detail, and the varying degrees of stress are calculated in a simple way, so that the merest tyro in mathematics will be able to appreciate and apply the principles laid down."—*The Surveyor*.

Crown 8vo, cloth, gilt. 3s. net.

THE ELEMENTARY PRINCIPLES OF GRAPHIC STATICS. Specially prepared for the Use of Students entering for the Examinations in Building Construction, Applied Mechanics, Machine Construction and Drawing, &c., of the Board of Education. By EDWARD HARDY, Teacher of Building Construction. Illustrated by 150 clear Diagrams.

Prof. Henry Adams, writing to the Author, says:—"You have treated the subject in a very clear and logical manner, and I shall certainly recommend the book to my elementary students as the best of its kind."

Small 8vo, cloth, gilt. 2s. 6d. net.

THE CONDUCT OF BUILDING WORK AND THE DUTIES OF A CLERK OF WORKS. A Handy Guide to the Superintendence of Building Operations. By J. LEANING, F.S.I. Second Edition, revised and enlarged.

"This most admirable little volume should be read by all those who have charge of building operations. . . . In a concise form it deals with many of the important points arising during the erection of a building."—*The British Architect*.

Large crown 8vo, cloth, gilt. 7s. 6d. net.

HOW TO ESTIMATE : OR THE ANALYSIS OF BUILDERS' PRICES. A Complete Guide to the Practice of Estimating, and a Reference Book of the most reliable Building Prices. By JOHN T. REA, F.S.I., Surveyor, War Department. With typical examples in each trade, and a large amount of useful information for the guidance of Estimators, including thousands of prices. Second Edition, thoroughly revised and much enlarged.

"Here at last is a book that can be confidently recommended as a comprehensive, practical, trustworthy, cheap, and really modern book on estimating. The book is excellent in plan, thorough in execution, clear in exposition, and will be a boon alike to the raw student and to the experienced estimator. For the former it will be an invaluable instructor; for the latter a trustworthy remembrancer and an indispensable work of reference."—*The Building World*.

Crown 8vo, cloth, gilt. 4s. 6d. net.

ESTIMATING. A Method of Pricing Builders' Quantities for Competitive Work, without the use of a Price Book. By GEORGE STEPHENSON. 4th Edition, the Prices carefully revised.

"Mr. Stephenson has succeeded in removing many of the difficulties in this branch of his profession, and anyone who has mastered this little book will be enabled to price a bill of quantities without recourse to his Laxton."—*The Building News*.

Crown 8vo, cloth, gilt. 3s. net.

REPAIRS: HOW TO MEASURE AND VALUE THEM. A Handbook for the use of Builders, Decorators, &c. By the Author of "Estimating." 4th Edition, revised to date.

"'Repairs' is a very serviceable handbook on the subject. The author proceeds, from the top floor downwards, to show how to value the items, by a method of framing the estimate in the measuring book. The *modus operandi* is simple and soon learnt."—*The Building News*.

Large crown 8vo, cloth, gilt. 5s. net.

GASFITTING. A Practical Handbook relating to the Distribution of Gas in Service Pipes, the Use of Coal Gas, and the best Means of Economising Gas from Main to Burner. By WALTER GRAFTON, F.C.S., Chemist at the Beckton Works of the Gas Light and Coke Co. With 143 Illustrations.

"The author is a recognised authority upon the subject of gas-lighting, and gas-fitters and others who intend to study gas-fitting in practical detail will find the book most serviceable."—*The Builder*.

Large 8vo, cloth, gilt. 4s. 6d. net.

THE DRAINAGE OF TOWN AND COUNTRY HOUSES. A Practical Account of Modern Sanitary Arrangements and Fittings. By G. A. T. MIDDLETON, A.R.I.B.A. With full particulars of the latest fittings and arrangements, and a special chapter on the Disposal of Sewage on a small scale, including an account of the Bacterial Method. Illustrated by 87 Diagrams and 6 Plates.

B. T. BATSFORD,
PUBLISHER,
94, High Holborn, London.

Thick royal 8vo, cloth, gilt. 12s. 6d.

THE PLUMBER AND SANITARY HOUSES. A Practical Treatise on the Principles of Internal Plumbing Work; or the best means for effectually excluding Noxious Gases from our Houses. By S. STEVENS HELLYER. 6th Edition, revised and enlarged. With 30 Plates, and 262 Woodcut Illustrations.

"The best treatise existing on Practical Plumbing."—*The Builder*.

"This work is an exhaustive treatise on the subject of House Sanitation, comprising all that relates to Drainage, Ventilation, and Water Supply within and appertaining to the house."—*The Journal of the Royal Institute of British Architects*.

Large thick 8vo, cloth, gilt. £1 12s. net.

SANITARY ENGINEERING. A Compendium of the latest and most reliable information on Sanitary Science in all its branches. By Colonel E. C. S. MOORE, R.E., M.S.I. Second Edition, thoroughly revised and greatly enlarged. Containing 830 pp. of Text, with 860 Illustrations, including 92 large Folding Plates.

"... A full and complete epitome of the latest practice in sanitary engineering. ... AS A BOOK OF REFERENCE IT IS SIMPLY INDISPENSABLE."—*The Public Health Engineer*.

"... We know of no single volume which contains such a mass of well-arranged information. It is encyclopædic, and should take its place as the standard book on the wide and important subject with which it deals."—*The Surveyor*.

Large 8vo, cloth, gilt. 6s. net.

WATERWORKS DISTRIBUTION. A Practical Guide to the Laying Out of Systems of distributing Mains for the Supply of Water to Cities and Towns. By J. A. MCPHERSON, A.M.Inst. C.E. Fully illustrated by 122 Diagrams.

"The author has evidently a large practical experience of the subject on which he has written, and he has succeeded in compiling a book which is sure to take its place among the standard works on water supply."—*The Surveyor*.

Large 8vo, cloth. 3s. 6d. net.

TECHNICAL PLUMBING. A Handbook for Students and Practical Men. By S. BARLOW BENNETT, Lecturer on Sanitary Engineering to the Durham County Council. Second Edition, revised, with about 500 Illustrations.

Small pocket size, leather, 1s. 6d. net, or in celluloid case 2s. net.

CLARKE'S POCKET-BOOK OF TABLES AND MEMORANDA FOR PLUMBERS, BUILDERS, SANITARY AND ELECTRICAL ENGINEERS, &c. By J. WRIGHT CLARKE, M.S.I. With a new Section of Electrical Memoranda and Formulæ. Entirely New and Revised Edition.

"It is obviously one of those things a tradesman should carry in his pocket as religiously as he does a foot rule."—*The Plumber and Decorator*.

"The amount of information this excellent little work contains is marvellous."—*The Sanitary Record*.

Large 8vo, cloth, gilt. 5s. net.

PRACTICAL SCIENCE FOR PLUMBERS. By J. WRIGHT CLARKE. Treating of Physics, Metals, Hydraulics, Heat, Temperature, &c., and their application to the problems of practical work. With about 200 Illustrations.

Crown 8vo, cloth, gilt. 3s. 6d. net.

PUMPS: THEIR PRINCIPLES AND CONSTRUCTION.

A Series of Lectures delivered at the Regent Street Polytechnic, London. By J. WRIGHT CLARKE, Author of "Plumbing Practice." With 73 Illustrations. Second Edition, thoroughly revised, with all the Illustrations specially re-drawn.

Crown 8vo, cloth, gilt. 2s.

HYDRAULIC RAMS, THEIR PRINCIPLES AND CONSTRUCTION.

By J. WRIGHT CLARKE, Author of "Pumps," "Plumbing Practice," &c. With results of Experiments carried out by the Author at the Regent Street Polytechnic and in various parts of the Country. Illustrated by 36 Diagrams.

Crown 8vo, cloth, gilt. 5s. net.

ARCHITECTURAL HYGIENE, or Sanitary Science as applied

to Building. By BANISTER F. FLETCHER, F.R.I.B.A., F.S.I., and H. PHILLIPS FLETCHER, F.R.I.B.A., F.S.I. Second Edition, revised. With upwards of 300 Illustrations.

Royal 8vo, cloth, gilt. 15s. net.

CONDITIONS OF CONTRACT relating to Building Works.

By FRANK W. MACEY, Architect. Revised, as to the strictly legal matter, by B. J. LEVERSON, Barrister-at-Law.

PROFESSOR BANISTER FLETCHER'S VALUABLE TEXT-BOOKS FOR ARCHITECTS AND SURVEYORS.

Arranged in Tabulated Form and fully indexed for ready reference.

Crown 8vo, cloth, gilt. 7s. 6d.

QUANTITIES. A Text-book explanatory of the Best Methods

adopted in the Measurement and Valuation of Builders' Work. 7th Edition, revised throughout and much improved by H. PHILLIPS FLETCHER, F.R.I.B.A., F.S.I. With special chapters on Cubing, Priced Schedules, Grouping, the Law, &c., and a typical example of the complete Taking-off, Abstracting, and Billing in all Trades. Containing about 450 pages, with 10 folding Plates and 100 other Diagrams in the Text.

"It is no doubt the best work on the subject extant."—*The Builder*.

"We compliment Mr. Phillips Fletcher on his revision, and on the accuracy of the book generally."—*The Surveyor*.

"A safe, comprehensive, and concise text-book on an important technical subject. We imagine few surveyors' or architects' shelves will be without it."—*The British Architect*.

"One of the most complete works upon the subject. Of great assistance to students."—*The Builder's Journal*.

"A good treatise by a competent master of the subject."—*The Building News*.

B. T. BATSFORD,
PUBLISHER,

94, High Holborn, London.

PROFESSOR BANISTER FLETCHER'S VALUABLE TEXT-BOOKS FOR ARCHITECTS AND SURVEYORS.

Arranged in Tabulated Form and fully indexed for ready reference.

THE NEW EDITIONS, REVISED AND BROUGHT UP TO DATE
By BANISTER F. FLETCHER, F.R.I.B.A., F.S.I., and
H. PHILLIPS FLETCHER, F.R.I.B.A., F.S.I., Barrister-at-Law.

Crown 8vo, uniformly bound in cloth, gilt. 6s. 6d. each.

LONDON BUILDING ACTS, 1894-1905. A Text-book on the Law relating to Building in the Metropolis. Containing the Acts *in extenso*, the By-laws and Regulations now in force, notes on the Acts, and reports of the principal cases. Third Edition, revised. Illustrated by 23 Coloured Plates. Including the full text of the Amendment Act of 1905, with a Note explaining its effect on new and existing buildings.

"IT IS THE LAW OF BUILDING FOR LONDON IN ONE VOLUME,"—*The Architect*.

"Illustrated by a series of invaluable coloured plates, showing clearly the meaning of the various clauses as regards construction."—*The Surveyor*.

DILAPIDATIONS. A Text-book on the Law and Practice. 6th Edition, thoroughly revised and enlarged, with the addition of all the most recent Acts and a large number of Legal Decisions, including a chapter on Fixtures.

"An excellent compendium on the law and practice on the subject."—*The Builder*.

LIGHT AND AIR. With Methods of Estimating Injuries, Reports of most recent Cases, &c. Illustrated by 27 Coloured Plates. 4th Edition, revised and enlarged, with an Appendix containing a *résumé* of the House of Lords' decision in the case of "Colls v. Home and Colonial Stores."

"By far the most complete and practical text-book we have seen. In it will be found the cream of all the legal definitions and decisions."—*The Building News*.

VALUATIONS AND COMPENSATIONS. A Text-book on the Practice of Valuing Property, and the Law of Compensation in relation thereto. Third Edition, revised and enlarged. With an Appendix of Forms of Precedents and an extensive series of Valuation Tables.

"Very useful to students preparing for the examination of the Surveyors' Institution."—*The Surveyor*.

"A complete guide to valuing land and houses for mortgage, renting, or investment, as well as for making valuations, when lands and houses are taken under compulsory powers by public bodies or companies. The tables contained in the Appendix are especially valuable, and there is an exhaustive index."—*The Property Market Review*.

Crown 8vo, cloth, gilt. 5s. 6d.

ARBITRATIONS. A Text-book for Arbitrators, Umpires, and all connected with Arbitrations, more especially Architects, Engineers, and Surveyors, in tabulated form, with the chief cases governing the same, and an Appendix of Forms, Statutes, Rules, &c. Third Edition, revised and largely re-written.

"Especially useful to young surveyors as a compendium of the knowledge which professional experience gives in more concrete form and with infinite variety of detail."—*The Surveyor*.

B. T. BATSFORD, Publisher, 94, High Holborn, London.

